

LEA Name : General McLane SD
Address : 11771 Edinboro Rd
Edinboro , PA 16412

County : Erie
AUN Number : 105253903
LEA Type : SD

Annual Financial Report Accuracy Certification Statement

For Fiscal Year Ending
6/30/2019

Pennsylvania Department of Education

&

Office of Comptroller Operations

PDE-2056: Intermediate Unit
PDE-2057: School District, AVTS/CTC, Charter School,
and Special Program Jointure

CERTIFICATION: By signing this page I agree that the electronic data submitted is a complete and accurate statement of the financial operations and status of the local education agency for the fiscal year. It has been prepared in accordance with generally accepted accounting principles and established Commonwealth of PA reporting guidelines.


Chief School Administrator Signature

1-29-2020
Date


Board Secretary Signature

11/29/20
Date

Bill Fendya

(814)273-1033 Ext :

Contact Person

Contact Person Telephone Number

williamfendya@generalmcclane.org

Contact Person E-mail Address

Contact Person Fax Number

Audit Certification

Annual Financial Report:

For Fiscal Year Ending 6/30/2019

(Pursuant to PA School Code Section 218(b))

LEA Name : General McLane SD
AUN Number : 105253903
County : Erie

Audit Certification Due:
12/31/2019

This certification is applicable to the Annual Financial Report data submitted through the Consolidated Financial Reporting System on: 01/29/2020 Date

Auditing Firm:

Buseck, Barger & Bleil


CERTIFICATION: By signing this page I agree that the financial statements of the school have been properly audited as noted above pursuant to Article XXIV, and in the auditor's professional opinion, the Annual Financial Report (PDE-2057) submitted on the date referenced is materially consistent with the audited financial statements.

Chief School Administrator


Signature

1.29.2020
Date

Board Secretary


Signature

1/29/20
Date

Bill Fendya

Contact Person

williamfendya@generalmcclane.org

Contact Person E-mail Address

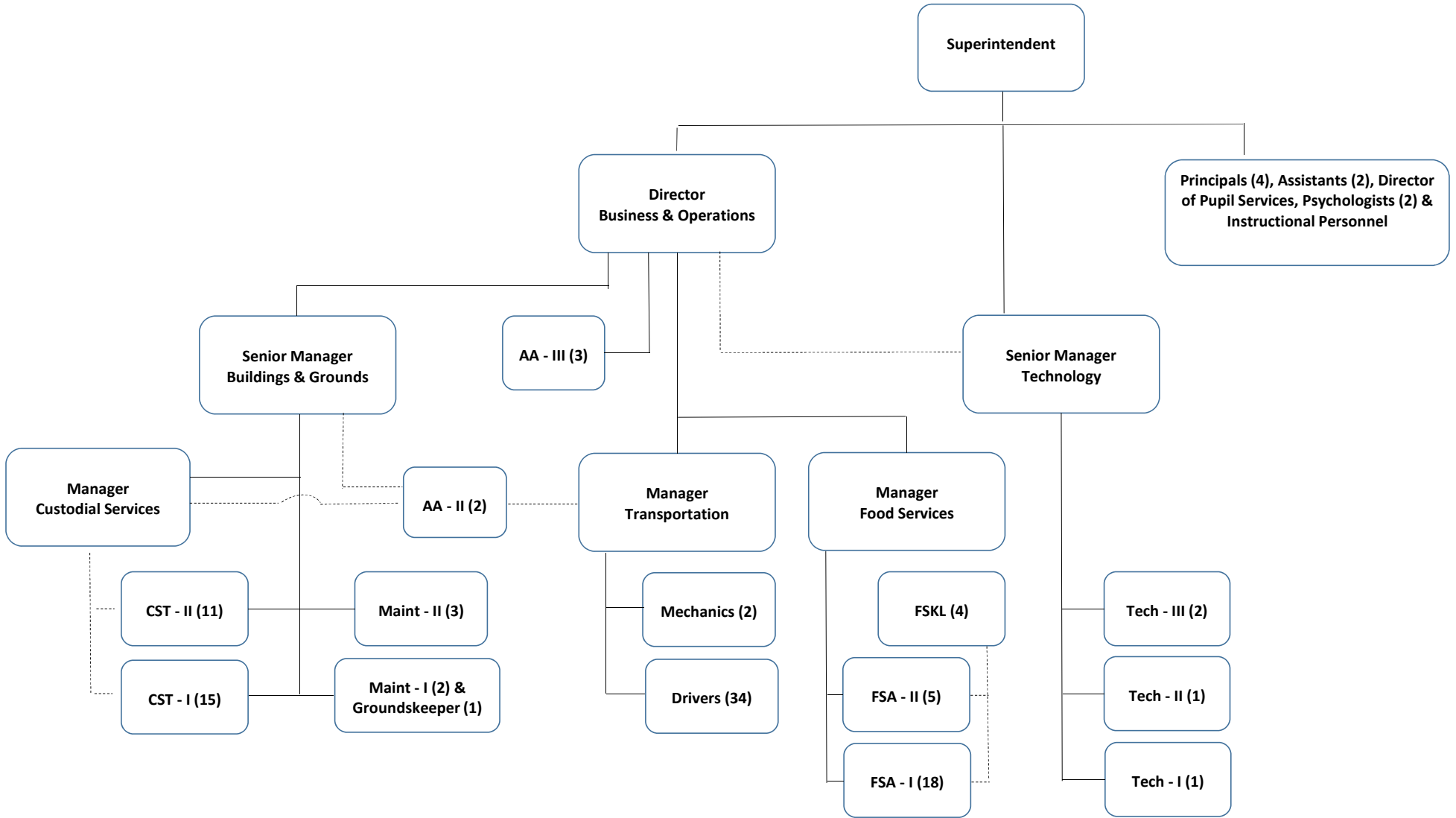
(814)273-1033

Ext :

Contact Person Telephone Number

Contact Person Fax Number

**General McLane School District
Organization Chart**



<u>Val Number</u>	<u>Description</u>	<u>Justification</u>
13020	<p>REG: Interfund Trans-Out must equal REG Interfund Trans-In plus REP Interfund Trans In minus REP Interfund Trans-Out. (REG 5200 = REG 9300 + REP 9300 - REP 5200) Reference amts do not include any incoming transfers of the Fid. Funds. Include Fid. Fund incoming transfer info in the justification. Correct or enter a justification.</p> <p>Transfers Out (REG 5200): \$2,050,197.00 (REG 9300) + (REP 9300) - (REP 5200) : \$2,048,141.00</p>	REG 5200 includes a \$2,056 transfer to a student activity fund.
16015	<p>REP Fund 51: Object 300 is greater than object 500. Purchased services for food service contracted services should be coded to objects 571 and 572. Correct or enter a justification.</p> <p>REP Fund 51 Object 300: \$5,255.00 REP Fund 51 Object 500: \$1,008.00</p>	Data entered is correct.
20160	<p>NAF: Data has been entered for Discrete Component Units within Column 98. Identify the Component Unit.</p>	General McLane Foundation
30501	<p>Revenue Detail: AFR amount must equal PDE FAI system amount.</p> <p>7311, AFR Rev Detail: \$958,197.38 7311, PDE FAI System: \$888,793.06</p>	Difference is due to accruals for 2018-19 revenues received in cash after June 30, 2019.
30720	<p>A large variance exists between federal revenues (8000's & 6830's) and federal expenditures reported in the General Fund. NOTE: IDEA pass thru, Medical Access, and QSCB/QZAB funded expenditures should be reported as federal expenditures. Correct data or enter a justification.</p> <p>General Fund Federal Revenues: \$1,268,830.04 General Fund Federal Expenditures: \$818,498.00</p>	The District entered a contract to acquire software and services from a vendor with payments (and expenditures) spread over fiscal years 2017-18, 2018-19 and 2019-20. The revenue from an ACCESS draw down was all recorded in fiscal year 2018-19.
41162	<p>Expenditure Detail, Salaries (Object 100) and Benefits (Object 200 series): Amounts must be entered for both Salaries and Benefits.</p> <p>Please verify following fund and function codes: Fund 10 Function 2330;</p>	Payments to real estate tax collectors are recorded as contracted services (object 300 series) rather than wages. However, the payments are processed through payroll and subject to employer FICA contributions which are recorded in object 220.
50410	<p>SESS - 2140 Psychological Services: SESS Schedule amounts for Special Education vary from prior year by 40% or more. Correct the data or enter a justification.</p> <p>SESS Schedule 2140: \$247,615.00 Prior Year SESS Schedule 2140: \$110,073.28</p>	A full-time school psychologist was on unpaid leave during the prior year (2017-18) and returned to work during the current year (2018-19)

50450 SESS - 2350 Legal and Accounting Services: SESS Schedule amounts for Special Education vary from prior year by 40% or more. Correct the data or enter a justification.

SESS Schedule 2350: \$25,758.70
Prior Year SESS Schedule 2350: \$56,988.90

Legal services incurred in the prior year (2017-18) for due process hearings and other special education issues were not incurred in the current year (2018-19)

Amounts Expressed in Whole Dollars	<u>General Fund</u> <u>(10)</u>	<u>Public Purpose Trust</u> <u>(27)</u>	<u>Other Compt Approved</u> <u>(28)</u>	<u>Athletic / Activity</u> <u>(29)</u>	<u>Capital Reserve (690.</u> <u>1850)</u> <u>(31)</u>
Assets And Deferred Outflows Of Resources					
Assets					
0100 Cash and Cash Equivalents	14,595,976				
0110 Investments	2,532,127				
0120 Taxes Receivable	560,794				
0130 Due From Other Funds					
0141 Due From Other Governments					
0142 State Revenue Receivable	1,604,560				
0143 Federal Revenue Receivable	115,941				
0145 Other Intergovernmental Revenue Receivable					
0146 Due from Primary Government					
0147 Due from Component Unit					
0150 Other Receivables	683,475				
0170 Inventories					
0180 Prepaid Expenses (Expenditures)	184,420				
0190 Other Current Assets					
Total Assets	\$20,277,293				
0910 Deferred Outflows of Resources					
Total Assets And Deferred Outflows Of Resources	\$20,277,293				

Amounts Expressed in Whole Dollars

	<u>Capital Reserve (1431)</u> <u>(32)</u>	<u>Other Capital Projects</u> <u>Fund</u> <u>(39)</u>	<u>Debt Service</u> <u>(40)</u>	<u>Permanent</u> <u>(90)</u>	<u>Total Governmental</u> <u>Funds</u>
Assets And Deferred Outflows Of Resources					
Assets					
0100 Cash and Cash Equivalents		3,571,319			18,167,295
0110 Investments					2,532,127
0120 Taxes Receivable					560,794
0130 Due From Other Funds		13,694			13,694
0141 Due From Other Governments		610,507			610,507
0142 State Revenue Receivable					1,604,560
0143 Federal Revenue Receivable					115,941
0145 Other Intergovernmental Revenue Receivable					
0146 Due from Primary Government					
0147 Due from Component Unit					
0150 Other Receivables					683,475
0170 Inventories					
0180 Prepaid Expenses (Expenditures)					184,420
0190 Other Current Assets					
Total Assets		\$4,195,520			\$24,472,813
0910 Deferred Outflows of Resources					
Total Assets And Deferred Outflows Of Resources		\$4,195,520			\$24,472,813

Amounts Expressed in Whole Dollars

<u>General Fund</u>	<u>Public Purpose Trust</u>	<u>Other Compt Approved</u>	<u>Athletic / Activity</u>	<u>Capital Reserve (690.</u>
<u>(10)</u>	<u>(27)</u>	<u>(28)</u>	<u>(29)</u>	<u>1850)</u>
				<u>(31)</u>

Liabilities And Deferred Inflows Of Resources And Fund Balances

Liabilities

0400 Due to Other Funds	16,130
0411 Due to Other Governments	
0412 Due to Primary Government	
0413 Due to Component Unit	
0420 Accounts Payable	689,985
0430 Contracts Payable	
0440 Current Portion of Long-Term Debt	
0450 Short-Term Payables	
0461 Accrued Salaries and Benefits	2,922,800
0462 Payroll Deductions and Withholding	1,404,514
0480 Unearned Revenues	383,862
0490 Other Current Liabilities	

Total Liabilities	\$5,417,291
--------------------------	--------------------

0950 Deferred Inflows of Resources

Fund Balances

0810 Nonspendable Fund Balance	184,420
0820 Restricted Fund Balance	
0830 Committed Fund Balance	8,833,417
0840 Assigned Fund Balance	
0850 Unassigned Fund Balance	5,842,165

Total Fund Balances	\$14,860,002
----------------------------	---------------------

Total Liabilities, Deferred Inflows Of Resources And Fund Balances	\$20,277,293
---	---------------------

Amounts Expressed in Whole Dollars	<u>Capital Reserve (1431)</u> <u>(32)</u>	<u>Other Capital Projects</u> <u>Fund</u> <u>(39)</u>	<u>Debt Service</u> <u>(40)</u>	<u>Permanent</u> <u>(90)</u>	<u>Total Governmental</u> <u>Funds</u>
Liabilities And Deferred Inflows Of Resources And Fund Balances					
Liabilities					
0400 Due to Other Funds					16,130
0411 Due to Other Governments					
0412 Due to Primary Government					
0413 Due to Component Unit					
0420 Accounts Payable		46,066			736,051
0430 Contracts Payable					
0440 Current Portion of Long-Term Debt					
0450 Short-Term Payables					
0461 Accrued Salaries and Benefits					2,922,800
0462 Payroll Deductions and Withholding					1,404,514
0480 Unearned Revenues					383,862
0490 Other Current Liabilities					
Total Liabilities		\$46,066			\$5,463,357
0950 Deferred Inflows of Resources					
Fund Balances					
0810 Nonspendable Fund Balance					184,420
0820 Restricted Fund Balance		4,149,454			4,149,454
0830 Committed Fund Balance					8,833,417
0840 Assigned Fund Balance					
0850 Unassigned Fund Balance					5,842,165
Total Fund Balances		\$4,149,454			\$19,009,456
Total Liabilities, Deferred Inflows Of Resources And Fund Balances		\$4,195,520			\$24,472,813

Amounts Expressed in Whole Dollars	<u>General Fund</u> <u>(10)</u>	<u>Public Purpose Trust</u> <u>(27)</u>	<u>Other Compt Approved</u> <u>(28)</u>	<u>Athletic / Activity</u> <u>(29)</u>	<u>Capital Reserve (690.</u> <u>1850)</u> <u>(31)</u>
Revenues					
6000 Revenue from Local Sources	15,040,060				
7000 Revenue from State Sources	17,764,770				
8000 Revenue from Federal Sources	857,972				
Total Revenues	\$33,662,802				
Expenditures					
1000 Instruction	19,478,483				
2000 Support Services	10,107,971				
3000 Operation of Non-Instructional Services	949,087				
4000 Facilities Acquisition, Construction and Improvement Services	564,099				
5110 Debt Service					
5130 Refund of Prior Year Revenues / Receipts					
Total Expenditures	\$31,099,640				
Excess (Deficiency) Of Revenues Over Expenditures	\$2,563,162				
Other Financing Sources (Uses)					
9110 Face Value of Bonds Issued					
9120 Proceeds from Refunding of Bonds					
9130 Bond Premiums					
9200 Proceeds from Extended-Term Financing					
9300 Interfund Transfers - IN					
9400 Sale of or Compensation for Loss of Fixed Assets					
9710 Transfers from Component Units					
9720 Transfers from Primary Governments					
9910 Other Financing Sources Not Listed in the 9000 Series					
9990 Insurance Recoveries					
5120 Debt Service – Refunded Bonds					
5150 Bond Discounts					
5200 Interfund Transfers – Out	2,050,197				
5300 Transfers Out to Component Units/Primary Governments					
Total Other Financing Sources (Uses)	(\$2,050,197)				

Amounts Expressed in Whole Dollars	<u>Capital Reserve (1431)</u> <u>(32)</u>	<u>Other Capital Projects</u> <u>Fund</u> <u>(39)</u>	<u>Debt Service</u> <u>(40)</u>	<u>Permanent</u> <u>(90)</u>	<u>Total Governmental</u> <u>Funds</u>
Revenues					
6000 Revenue from Local Sources		84,375			15,124,435
7000 Revenue from State Sources					17,764,770
8000 Revenue from Federal Sources					857,972
Total Revenues		\$84,375			\$33,747,177
Expenditures					
1000 Instruction					19,478,483
2000 Support Services		22,150			10,130,121
3000 Operation of Non-Instructional Services					949,087
4000 Facilities Acquisition, Construction and Improvement Services		1,552,548			2,116,647
5110 Debt Service					
5130 Refund of Prior Year Revenues / Receipts					
Total Expenditures		\$1,574,698			\$32,674,338
Excess (Deficiency) Of Revenues Over Expenditures		(\$1,490,323)			\$1,072,839
Other Financing Sources (Uses)					
9110 Face Value of Bonds Issued					
9120 Proceeds from Refunding of Bonds					
9130 Bond Premiums					
9200 Proceeds from Extended-Term Financing					
9300 Interfund Transfers - IN		2,005,000			2,005,000
9400 Sale of or Compensation for Loss of Fixed Assets					
9710 Transfers from Component Units					
9720 Transfers from Primary Governments					
9910 Other Financing Sources Not Listed in the 9000 Series					
9990 Insurance Recoveries					
5120 Debt Service – Refunded Bonds					
5150 Bond Discounts					
5200 Interfund Transfers – Out					2,050,197
5300 Transfers Out to Component Units/Primary Governments					
Total Other Financing Sources (Uses)		\$2,005,000			(\$45,197)

Amounts Expressed in Whole Dollars	<u>General Fund</u> <u>(10)</u>	<u>Public Purpose Trust</u> <u>(27)</u>	<u>Other Compt Approved</u> <u>(28)</u>	<u>Athletic / Activity</u> <u>(29)</u>	<u>Capital Reserve</u> <u>(690.</u> <u>1850)</u> <u>(31)</u>
Special And Extraordinary Items					
9920 Special Items – Gains					
9930 Extraordinary Items – Gains					
5520 Special Items – Losses					
5530 Extraordinary Items – Losses					
Net Change In Fund Balances	\$512,965				
Fund Balance					
0001 Fund Balance - Beginning of Fiscal Year	14,347,037				
Fund Balance - End Of Year	\$14,860,002				

Amounts Expressed in Whole Dollars	<u>Capital Reserve (1431)</u> <u>(32)</u>	<u>Other Capital Projects</u> <u>Fund</u> <u>(39)</u>	<u>Debt Service</u> <u>(40)</u>	<u>Permanent</u> <u>(90)</u>	<u>Total Governmental</u> <u>Funds</u>
Special And Extraordinary Items					
9920 Special Items – Gains					
9930 Extraordinary Items – Gains					
5520 Special Items – Losses					
5530 Extraordinary Items – Losses					
Net Change In Fund Balances		\$514,677			\$1,027,642
Fund Balance					
0001 Fund Balance - Beginning of Fiscal Year		3,634,777			17,981,814
Fund Balance - End Of Year		\$4,149,454			\$19,009,456

Amounts Expressed in Whole Dollars	<u>Food Service</u> <u>(51)</u>	<u>Child Care</u> <u>Operations</u> <u>(52)</u>	<u>Other Enterprise</u> <u>(58)</u>	<u>TOTAL</u>	<u>Internal Service</u> <u>(60)</u>
Assets And Deferred Outflows Of Resources					
Current Assets					
0100 Cash and Cash Equivalents	2,391			2,391	
0110 Investments					
0130 Due From Other Funds	2,436			2,436	
0141 Due From Other Governments					
0142 State Revenue Receivable	332			332	
0143 Federal Revenue Receivable	6,007			6,007	
0146 Due from Primary Government					
0147 Due from Component Unit					
0150 Other Receivables	592			592	
0170 Inventories	20,956			20,956	
0180 Prepaid Expenses (Expenditures)					
0190 Other Current Assets					
Total Current Assets	\$32,714			\$32,714	
Noncurrent Assets					
0211 Land					
0212 Site Improvements (Net)					
0220 Buildings and Building Improvements (Net)					
0230 Machinery, Equipment and Furniture (Net)	182,349			182,349	
0250 Construction in Progress					
0260 Long Term Prepayments					
0290 Other Noncurrent Assets					
Total Noncurrent Assets	\$182,349			\$182,349	
0910 Deferred Outflows of Resources	251,138			251,138	
Total Assets And Deferred Outflows Of Resources	\$466,201			\$466,201	

Amounts Expressed in Whole Dollars	<u>Food Service</u> (51)	<u>Child Care</u> <u>Operations</u> (52)	<u>Other Enterprise</u> (58)	<u>TOTAL</u>	<u>Internal Service</u> (60)
Liabilities And Deferred Inflows Of Resources And Net Position					
Current Liabilities					
0400 Due to Other Funds					
0411 Due to Other Governments					
0413 Due to Component Unit					
0420 Accounts Payable	560			560	
0430 Contracts Payable					
0440 Current Portion of Long-Term Debt					
0450 Short-Term Payables					
0461 Accrued Salaries and Benefits					
0462 Payroll Deductions and Withholding					
0480 Unearned Revenues					
0490 Other Current Liabilities					
Total Current Liabilities	\$560			\$560	
Noncurrent Liabilities					
0510 Bonds Payable					
0520 Extended-Term Financing Agreements Payable					
0530 Lease-Purchase Obligations					
0540 Accumulated Compensated Absences					
0550 Authority Lease Obligations					
0560 Other Post-Employment Benefits (OPEB)					
0570 Net Pension Liability	1,100,280			1,100,280	
0599 Other Noncurrent Liabilities					
Total Noncurrent Liabilities	\$1,100,280			\$1,100,280	
Total Liabilities	\$1,100,840			\$1,100,840	
0950 Deferred Inflows of Resources	63,300			63,300	
Net Position					
0791 Net Investment in Capital Assets	182,349			182,349	
0008 Restricted Net Position (0792 – 0798)	4,520			4,520	
0799 Unrestricted Net Position	(884,808)			(884,808)	
Total Net Position	(\$697,939)			(\$697,939)	
Total Liabilities And Deferred Inflows Of Resources And Net Position	\$466,201			\$466,201	

Amounts Expressed in Whole Dollars	<u>Food Service</u> <u>(51)</u>	<u>Child Care Operations</u> <u>(52)</u>	<u>Other Enterprise</u> <u>(58)</u>	<u>TOTAL</u>	<u>Internal Service</u> <u>(60)</u>
Operating Revenues					
6600 Food Service Revenue	320,405			320,405	
0071 Charges for Services					
0072 Other Operating Revenue					
Total Operating Revenues	\$320,405			\$320,405	
Operating Expenses					
100 Personnel Services – Salaries	335,074			335,074	
200 Personnel Services – Employee Benefits	145,611			145,611	
300 Purchased Professional and Technical Services	5,255			5,255	
400 Purchased Property Services	5,193			5,193	
500 Other Purchased Services	1,008			1,008	
600 Supplies	406,074			406,074	
740 Depreciation	10,528			10,528	
810 Dues and Fees					
890 Miscellaneous Expenditures					
Total Operating Expenses	\$908,743			\$908,743	
Operating Income (Loss)	(\$588,338)			(\$588,338)	
Non Operating Revenues (Expenses)					
6500 Earnings on Investments					
6920 Contributions and Donations from Private Sources					
6930 Gains or Losses on Sale of Fixed Assets	(2,821)			(2,821)	
6991 Refunds of a Prior Year Expenditure					
7000 Revenue from State Sources	89,498			89,498	
8000 Revenue from Federal Sources	466,201			466,201	
9990 Insurance Recoveries					
820 Claims and Judgments Against the LEA					
830 Interest					
TOTAL Non Operating Revenues (Expenses)	\$552,878			\$552,878	
Income (Loss) Before Contributions And Transfers	(\$35,460)			(\$35,460)	

Amounts Expressed in Whole Dollars	<u>Food Service</u> <u>(51)</u>	<u>Child Care Operations</u> <u>(52)</u>	<u>Other Enterprise</u> <u>(58)</u>	<u>TOTAL</u>	<u>Internal Service</u> <u>(60)</u>
Contributions, Transfers, and Special and Extraordinary Items					
5200 Interfund Transfers – Out					
5300 Transfers Out to Component Units/Primary Governments					
5520 Special Items – Losses					
5530 Extraordinary Items – Losses					
9300 Interfund Transfers - IN	43,141			43,141	
9500 Capital Contributions					
9700 Transfers IN From Component Units/Primary Governments					
9920 Special Items – Gains					
9930 Extraordinary Items – Gains					
Change In Net Position	\$7,681			\$7,681	
0002 Net Position - Beginning of Fiscal Year	(705,620)			(705,620)	
0003 Accounting Changes / Residual Equity Transfers					
Net Position - End Of Year	(\$697,939)			(\$697,939)	

Amounts Expressed in Whole Dollars	<u>Food Service</u> <u>(51)</u>	<u>Child Care Operations</u> <u>(52)</u>	<u>Other Enterprise</u> <u>(58)</u>	<u>TOTAL</u>	<u>Internal Service(60)</u>
Cash Flows From Operating Activities					
0011 Cash Receipts From Users	320,405			320,405	
0012 Cash Receipts From Assessments Made to Other Funds					
0013 Cash Receipts From Earnings on Investments					
0014 Cash Receipts From Other Operating Revenue					
0015 Cash Payments To Employees For Services	480,685			480,685	
0016 Cash Payments For Insurance Claims					
0017 Cash Payments To Suppliers For Goods and Services	346,847			346,847	
0018 Cash Payments For Other Operating Expenses	71,522			71,522	
Net Cash Provided By (Used For) Operating Activities	(\$578,649)			(\$578,649)	
Cash Flows From Non-Capital Financing Activities					
0021 Receipts From Local Sources - 6000	2,892			2,892	
0022 Receipts From State Sources - 7000	89,498			89,498	
0023 Receipts From Federal Sources -8000	466,201			466,201	
0024 Notes and Loans Received (Repaid)					
0025 Interest Paid on Notes/Loans - 5100-830					
0026 Operating Transfers In (Out)/Residual Equity Trans	43,141			43,141	
0027 Operating Transfers In (Out) Primary Government / Comp Unit					
0028 Receipts From Refund of Prior Year Expenditures - 6991					
0029 Special and Extraordinary Gains (losses)					
0030 Receipts from Insurance Recoveries -9990					
Net Cash Prov By (Used for) Non-Capital Financing Activities	\$601,732			\$601,732	
Cash Flows From Capital and Related Financing Activities					
0031 Payments For Fac Acq, Const, and Imp - 4000	(24,993)			(24,993)	
0032 Gain / (Loss) on Sale of Fixed Assets - 6930	(2,821)			(2,821)	
0033 Proceeds From Extended Term Financing - 9200					
0034 Principal Paid on Financing Agreements					
0035 Interest Paid on Financing Agreements - 5100-830					
0036 (Inc) Dec in Contributed Capital					
Net Cash Prov By (Used for) Capital and Related Financing Activities	(\$27,814)			(\$27,814)	
Cash Flows From Investing Activities					
0041 Earnings on Investments - 6500					
0042 Purchase of Inv Securities / Deposits to Inv Pools					
0043 Receipts From Investment Pool Withdrawals					
0044 Proceeds from Sale and Maturity of Inv Securities					

LEA : 105253903 General McLane SD

Printed 1/31/2020 11:46:00 AM

0045 Loans Received (Paid)

Net Cash Prov By (Used for) Investing Activities

	<u>Food Service</u> <u>(51)</u>	<u>Child Care Operations</u> <u>(52)</u>	<u>Other Enterprise</u> <u>(58)</u>	<u>TOTAL</u>	<u>Internal Service</u> <u>(60)</u>
Net Increase (Decrease) in Cash Flows	(4,731)			(4,731)	
0004 Cash and Cash Equivalents Beginning of Year	7,122			7,122	
Cash and Cash Equivalents at Year End	\$2,391			\$2,391	
<hr/>					
Reconciliation of Operating Income (Loss) To Net Cash Provided by (Used For) Operating Activities					
0005 Operating Income (Loss) per REP	(588,338)			(588,338)	
Adjustments					
0051 Depreciation and Net Amortization	10,528			10,528	
0052 Provision for Uncollectible Accounts					
0053 Other Adjustments					
Effect of Changes in Assets, Liabilities, Deferred Outflows and Deferred Inflows					
0054 (Inc) Dec In Accounts Receivable (0120-0150)	55,345			55,345	
0055 Advances to Other Funds (0160)					
0056 (Inc) Dec in Inventories (0170)	(5,559)			(5,559)	
0057 (Inc) Dec in Prepaid Expenses (0180)					
0058 (Inc) Dec in Other Current or Noncurrent Assets					
0064 Deferred Outflows (0910)	6,719			6,719	
0059 Inc (Dec) in Accounts Payable (0400-0450)	(45,664)			(45,664)	
0060 Inc (Dec) in Accrued Salaries/Benefits (0461)					
0065 Inc (Dec) in Net Pension Liabilities (0570)	(27,760)			(27,760)	
0066 Inc (Dec) in Other Postemp Benefit Oblig (0560)					
0061 Inc (Dec) in Payroll Deductions/Withholding (0462)					
0062 Inc (Dec) in Unearned Revenue (0480)					
0063 Inc (Dec) in Other Current or Noncurrent Liabilities					
0067 Deferred Inflows (0950)	16,080			16,080	
Total Adjustments	\$9,689			\$9,689	
Cash Provided By (Used for) Total	(\$578,649)			(\$578,649)	

COMBINED STATEMENT OF CASH FLOWS
SCHEDULE OF NONCASH INVESTING, CAPITAL, AND FINANCING ACTIVITIES

Explanation of Transaction and Balance Sheet Effect	Amount
Total	

LEA : 105253903 General McLane SD

Printed 1/31/2020 11:46:02 AM

Amounts Expressed in Whole Dollars

Private Purpose Trust
(71)

Investment Trust
(72)

Pension Trust
(73)

Activity
(81)

Assets And Deferred Outflows Of Resources

Assets

0100 Cash and Cash Equivalents				66,542
0110 Investments				
0130 Due From Other Funds				
0147 Due from Component Unit				
0150 Other Receivables				
0170 Inventories				
0180 Prepaid Expenses (Expenditures)				
0190 Other Current Assets				
0220 Buildings and Building Improvements (Net)				
0230 Machinery, Equipment and Furniture (Net)				

Total Assets				\$66,542
---------------------	--	--	--	-----------------

0910 Deferred Outflows of Resources

Total Assets And Deferred Outflows Of Resources				\$66,542
--	--	--	--	-----------------

LEA : 105253903 General McLane SD

Printed 1/31/2020 11:46:02 AM

Amounts Expressed in Whole Dollars

	<u>Other Agency</u> <u>(89)</u>	<u>Discrete Component Units</u> <u>(98)</u>	<u>Discrete Component Units</u> <u>(99)</u>	<u>Total Fiduciary Funds</u>
Assets And Deferred Outflows Of Resources				
Assets				
0100 Cash and Cash Equivalents		223,017		289,559
0110 Investments		385,884		385,884
0130 Due From Other Funds				
0147 Due from Component Unit				
0150 Other Receivables				
0170 Inventories				
0180 Prepaid Expenses (Expenditures)				
0190 Other Current Assets				
0220 Buildings and Building Improvements (Net)				
0230 Machinery, Equipment and Furniture (Net)				
Total Assets		\$608,901		\$675,443
0910 Deferred Outflows of Resources				
Total Assets And Deferred Outflows Of Resources		\$608,901		\$675,443

LEA : 105253903 General McLane SD

Printed 1/31/2020 11:46:02 AM

Amounts Expressed in Whole Dollars	<u>Private Purpose Trust</u> (71)	<u>Investment Trust</u> (72)	<u>Pension Trust</u> (73)	<u>Activity</u> (81)
Liabilities, Deferred Inflows Of Resources And Net Position				
Liabilities				
0400 Due to Other Funds				
0411 Due to Other Governments				
0412 Due to Primary Government				
0413 Due to Component Unit				
0420 Accounts Payable				
0430 Contracts Payable				
0450 Short-Term Payables				
0461 Accrued Salaries and Benefits				
0462 Payroll Deductions and Withholding				
0480 Unearned Revenues				
0490 Other Current Liabilities				66,542
Total Liabilities				\$66,542
0950 Deferred Inflows of Resources				
Net Position				
0791 Net Investment in Capital Assets				
0009 Restricted Net Position (0792 – 0798)				
0799 Unrestricted Net Position				
Total Net Position				
Total Liabilities, Deferred Inflows Of Resources And Net Position				\$66,542

Amounts Expressed in Whole Dollars	<u>Private Purpose Trust</u> <u>(71)</u>	<u>Investment Trust</u> <u>(72)</u>	<u>Pension Trust</u> <u>(73)</u>	<u>Discrete Component</u> <u>Units</u> <u>(98)</u>	<u>Discrete Component</u> <u>Units</u> <u>(99)</u>	<u>Total Fiduciary</u> <u>Funds</u>
Additions						
0091 Gifts and Contributions				67,668		67,668
0092 Other Additions				29,857		29,857
Deductions						
0093 Scholarships Awarded				19,494		19,494
0094 Other Deductions				18,745		18,745
Change In Net Position				\$59,286		\$59,286
0006 Net Position – Beginning of Fiscal Year				549,615		549,615
0007 Net Position Held in Trust for Pension Benefits						
Net Position - End of Fiscal Year				\$608,901		\$608,901

	<u>Revenue Reported In Current Year</u>	<u>Current Year Tax Accrual</u>	<u>Prior Year Tax Accrual</u>	<u>Taxes Collected In Current Year</u>
<u>Revenue from Local Sources</u>				
6111 Current Real Estate Taxes	11,185,024.41			11,185,024.41
6112 Interim Real Estate Taxes	43,718.36			43,718.36
6113 Public Utility Realty Taxes	13,626.14			13,626.14
6114 Payments in Lieu of Current Taxes - State / Local	31,892.99			31,892.99
6143 Current Act 511 Local Services Taxes	31,821.83			31,821.83
6151 Current Act 511 Earned Income Taxes	1,787,118.45	109,914.09	110,653.40	1,787,857.76
6153 Current Act 511 Real Estate Transfer Taxes	217,966.79	21,513.25	19,136.63	215,590.17
6411 Delinquent Real Estate Taxes	486,618.46	82,623.69	108,161.18	512,155.95
6500 Earnings on Investments	365,551.78			
6700 Revenues from LEA Activities	31,052.00			
6832 Federal IDEA Revenue Received as Pass Through	410,858.36			
6910 Rentals	65,386.00			
6941 Regular Day School Tuition	101,688.83			
6942 Summer School Tuition	840.00			
6944 Receipts from Other LEAs in Pennsylvania - Education	190,390.86			
6949 Other Tuition from Patrons	42,000.00			
6991 Refunds of a Prior Year Expenditure	14,188.54			
6999 Other Revenues Not Specified Above	20,316.52			
TOTAL Revenue from Local Sources	\$15,040,060.32	\$214,051.03	\$237,951.21	\$13,821,687.61

**Revenue Reported
In Current Year**

Revenue from State Sources

7110 Basic Education Funding	10,619,171.50		
7160 Tuition for Orphans Subsidy	44,024.97		
7271 Special Education funds for School-Aged Pupils	1,504,997.42		
7311 Pupil Transportation Subsidy	958,197.38		
7312 Nonpublic and Charter School Pupil Transportation Subsidy	21,560.00		
7330 Health Services (Medical, Dental, Nurse, Act 25)	40,403.93		
7340 State Property Tax Reduction Allocation	518,608.40		
7361 School Safety and Security Grants	25,000.00		
7505 Ready to Learn Block Grant	329,440.00		
7810 State Share of Social Security and Medicare Taxes	669,649.25		
7820 State Share of Retirement Contributions	3,033,717.04		
TOTAL Revenue from State Sources	\$17,764,769.89		

**Revenue Reported
In Current Year**

Revenue from Federal Sources

8514 NCLB, Title I - Improving the Academic Achievement of the Disadvantaged	320,672.17			
8515 NCLB, Title II - Preparing, Training and Recruiting High Quality Teachers and Principals	63,498.00			
8517 NCLB, Title IV - 21St Century Schools	23,470.03			
8810 School-Based Access Medicaid Reimbursement Program (SBAP) Reimbursements (Access)	437,054.39			
8820 Medical Assistance Reimbursement for Administrative Claiming (Quarterly) Program	13,277.09			
TOTAL Revenue from Federal Sources	\$857,971.68			
TOTAL FROM ALL SOURCES	\$33,662,801.89	\$214,051.03	\$237,951.21	\$13,821,687.61

Revenue from Local Sources	15,040,060.32
Revenue from State Sources	17,764,769.89
Revenue from Federal Sources	857,971.68
Other Financing Sources	
TOTAL FROM ALL SOURCES	\$33,662,801.89

General Fund (10)

	<u>Total</u>
1000 Instruction	
100 Personnel Services – Salaries	
100 Personnel Services – Salaries	10,502,725.97
Total Personnel Services – Salaries	\$10,502,725.97
200 Personnel Services – Employee Benefits	
210 Group Insurance – Contracted Provider	7,184.40
220 Social Security Contributions	788,232.33
230 PSERS Retirement Contributions	3,393,064.42
250 Unemployment Compensation	1,910.33
260 Workers’ Compensation	78,555.43
270 Group Insurance – Self-Insurance	1,938,937.66
Total Personnel Services – Employee Benefits	\$6,207,884.57
300 Purchased Professional and Technical Services	
322 Professional Educational Services – Ius	544,996.97
323 Professional Educational Services – Other Educational Agencies	15,181.89
329 Professional Educational Services – Other	334,920.88
340 Technical Services	72,733.40
390 Other Purchased Professional and Technical Services	52,202.14
Total Purchased Professional and Technical Services	\$1,020,035.28
400 Purchased Property Services	
430 Repairs and Maintenance Services	1,496.00
Total Purchased Property Services	\$1,496.00
500 Other Purchased Services	
561 Tuition To Other School Districts Within the State	154,844.76
562 Tuition To Pennsylvania Charter Schools	579,534.83
563 Tuition To Nonpublic Schools	5,796.00
564 Tuition To Career and Technology Centers	437,261.55
567 Tuition To Approved Private Schools (APS) and PA Chartered Schools for the Deaf and Blind	103,096.20
568 Tuition To Private Residential Rehabilitative Institutions (PRRI) [In-State] and Detention Centers	2,754.82
569 Tuition – Other	5,850.00
580 Travel	27,538.35
Total Other Purchased Services	\$1,316,676.51
600 Supplies	
610 General Supplies	254,005.71
640 Books and Periodicals	84,349.68
Total Supplies	\$338,355.39
700 Property	
762 Capitalized Equipment - Replacement	91,309.48
Total Property	\$91,309.48
Total 1000 Instruction	\$19,478,483.20

General Fund (10)

1100 Regular Programs – Elementary / Secondary	<u>Elementary</u>	<u>Secondary</u>	<u>Federal</u>	<u>Total</u>
100 Personnel Services – Salaries				
100 Personnel Services – Salaries	3,909,073.05	3,836,151.65	223,377.00	7,968,601.70
Total Personnel Services – Salaries	\$3,909,073.05	\$3,836,151.65	\$223,377.00	\$7,968,601.70
200 Personnel Services – Employee Benefits				
210 Group Insurance – Contracted Provider	2,634.46	2,378.49	183.60	5,196.55
220 Social Security Contributions	292,471.15	288,654.09	16,601.79	597,727.03
230 PSERS Retirement Contributions	1,284,223.65	1,233,691.11	33,572.60	2,551,487.36
250 Unemployment Compensation	572.97	697.20	43.47	1,313.64
260 Workers' Compensation	28,850.52	28,888.85	1,606.65	59,346.02
270 Group Insurance – Self-Insurance	783,986.42	660,371.00	59,845.78	1,504,203.20
Total Personnel Services – Employee Benefits	\$2,392,739.17	\$2,214,680.74	\$111,853.89	\$4,719,273.80
300 Purchased Professional and Technical Services				
322 Professional Educational Services – lus			1,171.00	1,171.00
329 Professional Educational Services – Other	42,920.00		3,900.00	46,820.00
340 Technical Services	28,459.27	44,274.13		72,733.40
390 Other Purchased Professional and Technical Services	100.00	12,899.72	11,850.00	24,849.72
Total Purchased Professional and Technical Services	\$71,479.27	\$57,173.85	\$16,921.00	\$145,574.12
400 Purchased Property Services				
430 Repairs and Maintenance Services	748.00	748.00		1,496.00
Total Purchased Property Services	\$748.00	\$748.00		\$1,496.00
500 Other Purchased Services				
561 Tuition To Other School Districts Within the State	1,816.88	2,137.19		3,954.07
562 Tuition To Pennsylvania Charter Schools	131,436.49	390,142.45		521,578.94
569 Tuition – Other		5,850.00		5,850.00
580 Travel	1,970.21	840.08	21,187.20	23,997.49
Total Other Purchased Services	\$135,223.58	\$398,969.72	\$21,187.20	\$555,380.50
600 Supplies				
610 General Supplies	51,361.81	102,773.20	34,300.91	188,435.92
640 Books and Periodicals	28,822.06	50,928.58		79,750.64
Total Supplies	\$80,183.87	\$153,701.78	\$34,300.91	\$268,186.56
700 Property				
762 Capitalized Equipment - Replacement	10,149.98	42,208.65		52,358.63
Total Property	\$10,149.98	\$42,208.65		\$52,358.63
Total 1100 Regular Programs – Elementary / Secondary	\$6,599,596.92	\$6,703,634.39	\$407,640.00	\$13,710,871.31

General Fund (10)

1110 Regular Programs

100 Personnel Services – Salaries

	<u>Elementary</u>	<u>Secondary</u>	<u>Federal</u>	<u>Total</u>
100 Personnel Services – Salaries	3,909,073.05	3,836,151.65		7,745,224.70
Total Personnel Services – Salaries	\$3,909,073.05	\$3,836,151.65		\$7,745,224.70

200 Personnel Services – Employee Benefits

210 Group Insurance – Contracted Provider	2,634.46	2,378.49		5,012.95
220 Social Security Contributions	292,471.15	288,654.09		581,125.24
230 PSERS Retirement Contributions	1,284,223.65	1,233,691.11		2,517,914.76
250 Unemployment Compensation	572.97	697.20		1,270.17
260 Workers' Compensation	28,850.52	28,888.85		57,739.37
270 Group Insurance – Self-Insurance	783,986.42	660,371.00		1,444,357.42
Total Personnel Services – Employee Benefits	\$2,392,739.17	\$2,214,680.74		\$4,607,419.91

300 Purchased Professional and Technical Services

329 Professional Educational Services – Other	42,920.00			42,920.00
340 Technical Services	28,459.27	44,274.13		72,733.40
390 Other Purchased Professional and Technical Services	100.00	12,899.72		12,999.72
Total Purchased Professional and Technical Services	\$71,479.27	\$57,173.85		\$128,653.12

400 Purchased Property Services

430 Repairs and Maintenance Services	748.00	748.00		1,496.00
Total Purchased Property Services	\$748.00	\$748.00		\$1,496.00

500 Other Purchased Services

561 Tuition To Other School Districts Within the State	1,816.88	2,137.19		3,954.07
562 Tuition To Pennsylvania Charter Schools	131,436.49	390,142.45		521,578.94
569 Tuition – Other		5,850.00		5,850.00
580 Travel	1,970.21	840.08		2,810.29
Total Other Purchased Services	\$135,223.58	\$398,969.72		\$534,193.30

600 Supplies

610 General Supplies	51,361.81	102,773.20		154,135.01
640 Books and Periodicals	28,822.06	50,928.58		79,750.64
Total Supplies	\$80,183.87	\$153,701.78		\$233,885.65

700 Property

762 Capitalized Equipment - Replacement	10,149.98	42,208.65		52,358.63
Total Property	\$10,149.98	\$42,208.65		\$52,358.63

Total 1110 Regular Programs

Total 1110 Regular Programs	\$6,599,596.92	\$6,703,634.39		\$13,303,231.31
------------------------------------	-----------------------	-----------------------	--	------------------------

General Fund (10)

	<u>Elementary</u>	<u>Secondary</u>	<u>Federal</u>	<u>Total</u>
1190 Federally-Funded Regular Programs				
100 Personnel Services – Salaries				
100 Personnel Services – Salaries			223,377.00	223,377.00
Total Personnel Services – Salaries			\$223,377.00	\$223,377.00
200 Personnel Services – Employee Benefits				
210 Group Insurance – Contracted Provider			183.60	183.60
220 Social Security Contributions			16,601.79	16,601.79
230 PSERS Retirement Contributions			33,572.60	33,572.60
250 Unemployment Compensation			43.47	43.47
260 Workers' Compensation			1,606.65	1,606.65
270 Group Insurance – Self-Insurance			59,845.78	59,845.78
Total Personnel Services – Employee Benefits			\$111,853.89	\$111,853.89
300 Purchased Professional and Technical Services				
322 Professional Educational Services – Ius			1,171.00	1,171.00
329 Professional Educational Services – Other			3,900.00	3,900.00
390 Other Purchased Professional and Technical Services			11,850.00	11,850.00
Total Purchased Professional and Technical Services			\$16,921.00	\$16,921.00
500 Other Purchased Services				
580 Travel			21,187.20	21,187.20
Total Other Purchased Services			\$21,187.20	\$21,187.20
600 Supplies				
610 General Supplies			34,300.91	34,300.91
Total Supplies			\$34,300.91	\$34,300.91
Total 1190 Federally-Funded Regular Programs			\$407,640.00	\$407,640.00

LEA : 105253903 General McLane SD

Printed 1/31/2020 11:46:14 AM

Page - 5 of 20

General Fund (10)

1200 Special Programs – Elementary / Secondary

	<u>Elementary</u>	<u>Secondary</u>	<u>Federal</u>	<u>Total</u>
100 Personnel Services – Salaries				
100 Personnel Services – Salaries	1,101,628.01	805,433.06	3,112.72	1,910,173.79
Total Personnel Services – Salaries	\$1,101,628.01	\$805,433.06	\$3,112.72	\$1,910,173.79
200 Personnel Services – Employee Benefits				
210 Group Insurance – Contracted Provider	873.67	691.68		1,565.35
220 Social Security Contributions	82,583.10	60,869.59	150.09	143,602.78
230 PSERS Retirement Contributions	363,245.08	269,340.03	582.71	633,167.82
250 Unemployment Compensation	180.40	332.32		512.72
260 Workers' Compensation	8,330.16	6,107.99	78.48	14,516.63
270 Group Insurance – Self-Insurance	193,735.29	116,137.68		309,872.97
Total Personnel Services – Employee Benefits	\$648,947.70	\$453,479.29	\$811.28	\$1,103,238.27
300 Purchased Professional and Technical Services				
322 Professional Educational Services – Ius	15,382.51	14,839.68	277,539.58	307,761.77
323 Professional Educational Services – Other Educational Agencies	13,749.24	1,432.65		15,181.89
329 Professional Educational Services – Other	43,833.05	7,998.41	129,394.42	181,225.88
Total Purchased Professional and Technical Services	\$72,964.80	\$24,270.74	\$406,934.00	\$504,169.54
500 Other Purchased Services				
561 Tuition To Other School Districts Within the State	50.48	46,750.58		46,801.06
562 Tuition To Pennsylvania Charter Schools	57,955.89			57,955.89
564 Tuition To Career and Technology Centers		21,810.06		21,810.06
567 Tuition To Approved Private Schools (APS) and PA Chartered Schools for the Deaf and Blind	40,579.78	62,516.42		103,096.20
568 Tuition To Private Residential Rehabilitative Institutions (PRRI) [In-State] and Detention Centers		2,754.82		2,754.82
580 Travel	2,005.88	1,534.98		3,540.86
Total Other Purchased Services	\$100,592.03	\$135,366.86		\$235,958.89
600 Supplies				
610 General Supplies	11,510.50	10,004.22		21,514.72
640 Books and Periodicals	2,245.02	2,354.02		4,599.04
Total Supplies	\$13,755.52	\$12,358.24		\$26,113.76
Total 1200 Special Programs – Elementary / Secondary	\$1,937,888.06	\$1,430,908.19	\$410,858.00	\$3,779,654.25

LEA : 105253903 General McLane SD

Printed 1/31/2020 11:46:14 AM

General Fund (10)

1210 Life Skills Support

	<u>Elementary</u>	<u>Secondary</u>	<u>Federal</u>	<u>Total</u>
100 Personnel Services – Salaries				
100 Personnel Services – Salaries	175,460.70	134,345.71		309,806.41
Total Personnel Services – Salaries	\$175,460.70	\$134,345.71		\$309,806.41
200 Personnel Services – Employee Benefits				
210 Group Insurance – Contracted Provider	162.11	109.99		272.10
220 Social Security Contributions	13,274.07	10,167.95		23,442.02
230 PSERS Retirement Contributions	57,507.57	44,749.92		102,257.49
250 Unemployment Compensation	32.25	111.38		143.63
260 Workers' Compensation	1,343.63	1,049.89		2,393.52
270 Group Insurance – Self-Insurance	25,418.90	15,300.03		40,718.93
Total Personnel Services – Employee Benefits	\$97,738.53	\$71,489.16		\$169,227.69
600 Supplies				
610 General Supplies	2,408.47	4,253.00		6,661.47
640 Books and Periodicals	88.77	88.77		177.54
Total Supplies	\$2,497.24	\$4,341.77		\$6,839.01
Total 1210 Life Skills Support	\$275,696.47	\$210,176.64		\$485,873.11

General Fund (10)

	<u>Elementary</u>	<u>Secondary</u>	<u>Federal</u>	<u>Total</u>
1220 Sensory Support				
100 Personnel Services – Salaries				
100 Personnel Services – Salaries	104,597.65	26,081.35		130,679.00
Total Personnel Services – Salaries	\$104,597.65	\$26,081.35		\$130,679.00
200 Personnel Services – Employee Benefits				
210 Group Insurance – Contracted Provider	71.15	17.78		88.93
220 Social Security Contributions	7,826.66	1,951.72		9,778.38
230 PSERS Retirement Contributions	34,933.55	8,710.55		43,644.10
250 Unemployment Compensation	22.61	7.95		30.56
260 Workers' Compensation	772.90	189.11		962.01
270 Group Insurance – Self-Insurance	19,893.18	4,973.37		24,866.55
Total Personnel Services – Employee Benefits	\$63,520.05	\$15,850.48		\$79,370.53
300 Purchased Professional and Technical Services				
322 Professional Educational Services – Ius	14,839.68	14,839.68		29,679.36
Total Purchased Professional and Technical Services	\$14,839.68	\$14,839.68		\$29,679.36
600 Supplies				
610 General Supplies	822.60	235.00		1,057.60
Total Supplies	\$822.60	\$235.00		\$1,057.60
Total 1220 Sensory Support	\$183,779.98	\$57,006.51		\$240,786.49

General Fund (10)

1230 Emotional Support

	<u>Elementary</u>	<u>Secondary</u>	<u>Federal</u>	<u>Total</u>
100 Personnel Services – Salaries				
100 Personnel Services – Salaries	370,751.05	284,044.94		654,795.99
Total Personnel Services – Salaries	\$370,751.05	\$284,044.94		\$654,795.99
200 Personnel Services – Employee Benefits				
210 Group Insurance – Contracted Provider	315.82	287.44		603.26
220 Social Security Contributions	27,706.73	21,270.34		48,977.07
230 PSERS Retirement Contributions	120,548.96	94,825.92		215,374.88
250 Unemployment Compensation	33.25	109.60		142.85
260 Workers' Compensation	2,903.70	2,220.81		5,124.51
270 Group Insurance – Self-Insurance	74,444.91	51,414.00		125,858.91
Total Personnel Services – Employee Benefits	\$225,953.37	\$170,128.11		\$396,081.48
500 Other Purchased Services				
567 Tuition To Approved Private Schools (APS) and PA Chartered Schools for the Deaf and Blind		21,936.64		21,936.64
Total Other Purchased Services		\$21,936.64		\$21,936.64
600 Supplies				
610 General Supplies	6,614.02	5,152.84		11,766.86
Total Supplies	\$6,614.02	\$5,152.84		\$11,766.86
Total 1230 Emotional Support	\$603,318.44	\$481,262.53		\$1,084,580.97

General Fund (10)

1240 Academic Support

	<u>Elementary</u>	<u>Secondary</u>	<u>Federal</u>	<u>Total</u>
100 Personnel Services – Salaries				
100 Personnel Services – Salaries	401,281.87	305,620.94		706,902.81
Total Personnel Services – Salaries	\$401,281.87	\$305,620.94		\$706,902.81
200 Personnel Services – Employee Benefits				
210 Group Insurance – Contracted Provider	272.45	225.66		498.11
220 Social Security Contributions	29,978.76	23,120.97		53,099.73
230 PSERS Retirement Contributions	134,015.88	102,037.96		236,053.84
250 Unemployment Compensation	92.29	103.39		195.68
260 Workers' Compensation	2,963.57	2,228.03		5,191.60
270 Group Insurance – Self-Insurance	73,978.30	37,507.32		111,485.62
Total Personnel Services – Employee Benefits	\$241,301.25	\$165,223.33		\$406,524.58
600 Supplies				
610 General Supplies	1,409.68	92.81		1,502.49
640 Books and Periodicals	2,156.25	2,265.25		4,421.50
Total Supplies	\$3,565.93	\$2,358.06		\$5,923.99
Total 1240 Academic Support	\$646,149.05	\$473,202.33		\$1,119,351.38

LEA : 105253903 General McLane SD

Printed 1/31/2020 11:46:14 AM

General Fund (10)

	<u>Elementary</u>	<u>Secondary</u>	<u>Federal</u>	<u>Total</u>
1241 Learning Support – Public				
100 Personnel Services – Salaries				
100 Personnel Services – Salaries	392,484.00	290,633.78		683,117.78
Total Personnel Services – Salaries	\$392,484.00	\$290,633.78		\$683,117.78
200 Personnel Services – Employee Benefits				
210 Group Insurance – Contracted Provider	266.85	216.43		483.28
220 Social Security Contributions	29,318.10	21,987.11		51,305.21
230 PSERS Retirement Contributions	131,077.67	97,032.73		228,110.40
250 Unemployment Compensation	90.39	100.19		190.58
260 Workers' Compensation	2,898.54	2,117.43		5,015.97
270 Group Insurance – Self-Insurance	71,737.76	35,199.72		106,937.48
Total Personnel Services – Employee Benefits	\$235,389.31	\$156,653.61		\$392,042.92
600 Supplies				
610 General Supplies	894.59	21.94		916.53
640 Books and Periodicals		109.00		109.00
Total Supplies	\$894.59	\$130.94		\$1,025.53
Total 1241 Learning Support – Public	\$628,767.90	\$447,418.33		\$1,076,186.23

General Fund (10)

1243 Gifted Support

100 Personnel Services – Salaries

	<u>Elementary</u>	<u>Secondary</u>	<u>Federal</u>	<u>Total</u>
100 Personnel Services – Salaries	8,797.87	14,987.16		23,785.03
Total Personnel Services – Salaries	\$8,797.87	\$14,987.16		\$23,785.03

200 Personnel Services – Employee Benefits

210 Group Insurance – Contracted Provider	5.60	9.23		14.83
220 Social Security Contributions	660.66	1,133.86		1,794.52
230 PSERS Retirement Contributions	2,938.21	5,005.23		7,943.44
250 Unemployment Compensation	1.90	3.20		5.10
260 Workers' Compensation	65.03	110.60		175.63
270 Group Insurance – Self-Insurance	2,240.54	2,307.60		4,548.14
Total Personnel Services – Employee Benefits	\$5,911.94	\$8,569.72		\$14,481.66

600 Supplies

610 General Supplies	515.09	70.87		585.96
640 Books and Periodicals	2,156.25	2,156.25		4,312.50
Total Supplies	\$2,671.34	\$2,227.12		\$4,898.46
Total 1243 Gifted Support	\$17,381.15	\$25,784.00		\$43,165.15

LEA : 105253903 General McLane SD

Printed 1/31/2020 11:46:14 AM

General Fund (10)

1280 Early Intervention Support

300 Purchased Professional and Technical Services

322 Professional Educational Services – lus

Total Purchased Professional and Technical Services

Total 1280 Early Intervention Support

	<u>Elementary</u>	<u>Secondary</u>	<u>Federal</u>	<u>Total</u>
	542.83			542.83
	\$542.83			\$542.83
	\$542.83			\$542.83

General Fund (10)

	<u>Elementary</u>	<u>Secondary</u>	<u>Federal</u>	<u>Total</u>
1290 Special Programs - Other Support				
100 Personnel Services – Salaries				
100 Personnel Services – Salaries	49,536.74	55,340.12	3,112.72	107,989.58
Total Personnel Services – Salaries	\$49,536.74	\$55,340.12	\$3,112.72	\$107,989.58
200 Personnel Services – Employee Benefits				
210 Group Insurance – Contracted Provider	52.14	50.81		102.95
220 Social Security Contributions	3,796.88	4,358.61	150.09	8,305.58
230 PSERS Retirement Contributions	16,239.12	19,015.68	582.71	35,837.51
260 Workers' Compensation	346.36	420.15	78.48	844.99
270 Group Insurance – Self-Insurance		6,942.96		6,942.96
Total Personnel Services – Employee Benefits	\$20,434.50	\$30,788.21	\$811.28	\$52,033.99
300 Purchased Professional and Technical Services				
322 Professional Educational Services – lus			277,539.58	277,539.58
323 Professional Educational Services – Other Educational Agencies	13,749.24	1,432.65		15,181.89
329 Professional Educational Services – Other	43,833.05	7,998.41	129,394.42	181,225.88
Total Purchased Professional and Technical Services	\$57,582.29	\$9,431.06	\$406,934.00	\$473,947.35
500 Other Purchased Services				
561 Tuition To Other School Districts Within the State	50.48	46,750.58		46,801.06
562 Tuition To Pennsylvania Charter Schools	57,955.89			57,955.89
564 Tuition To Career and Technology Centers		21,810.06		21,810.06
567 Tuition To Approved Private Schools (APS) and PA Chartered Schools for the Deaf and Blind	40,579.78	40,579.78		81,159.56
568 Tuition To Private Residential Rehabilitative Institutions (PRRI) [In-State] and Detention Centers		2,754.82		2,754.82
580 Travel	2,005.88	1,534.98		3,540.86
Total Other Purchased Services	\$100,592.03	\$113,430.22		\$214,022.25
600 Supplies				
610 General Supplies	255.73	270.57		526.30
Total Supplies	\$255.73	\$270.57		\$526.30
Total 1290 Special Programs - Other Support	\$228,401.29	\$209,260.18	\$410,858.00	\$848,519.47

General Fund (10)

1300 Vocational Education

100 Personnel Services – Salaries

	<u>Elementary</u>	<u>Secondary</u>	<u>Federal</u>	<u>Total</u>
100 Personnel Services – Salaries		579,039.00		579,039.00
Total Personnel Services – Salaries		\$579,039.00		\$579,039.00

200 Personnel Services – Employee Benefits

210 Group Insurance – Contracted Provider		400.26		400.26
220 Social Security Contributions		43,526.75		43,526.75
230 PSERS Retirement Contributions		193,407.66		193,407.66
250 Unemployment Compensation		55.02		55.02
260 Workers' Compensation		4,343.91		4,343.91
270 Group Insurance – Self-Insurance		115,899.75		115,899.75
Total Personnel Services – Employee Benefits		\$357,633.35		\$357,633.35

500 Other Purchased Services

564 Tuition To Career and Technology Centers		391,538.04		391,538.04
Total Other Purchased Services		\$391,538.04		\$391,538.04

600 Supplies

610 General Supplies		13,884.07		13,884.07
Total Supplies		\$13,884.07		\$13,884.07

700 Property

762 Capitalized Equipment - Replacement		38,950.85		38,950.85
Total Property		\$38,950.85		\$38,950.85

Total 1300 Vocational Education

		\$1,381,045.31		\$1,381,045.31
--	--	-----------------------	--	-----------------------

General Fund (10)

1400 Other Instructional Programs – Elementary / Secondary

	<u>Elementary</u>	<u>Secondary</u>	<u>Federal</u>	<u>Total</u>
100 Personnel Services – Salaries				
100 Personnel Services – Salaries	857.50	44,053.98		44,911.48
Total Personnel Services – Salaries	\$857.50	\$44,053.98		\$44,911.48
200 Personnel Services – Employee Benefits				
210 Group Insurance – Contracted Provider		22.24		22.24
220 Social Security Contributions	64.05	3,311.72		3,375.77
230 PSERS Retirement Contributions	286.66	14,714.92		15,001.58
250 Unemployment Compensation		28.95		28.95
260 Workers' Compensation	8.95	339.92		348.87
270 Group Insurance – Self-Insurance		8,961.74		8,961.74
Total Personnel Services – Employee Benefits	\$359.66	\$27,379.49		\$27,739.15
300 Purchased Professional and Technical Services				
322 Professional Educational Services – Ius	44,661.47	191,402.73		236,064.20
329 Professional Educational Services – Other	44,661.47	62,213.53		106,875.00
390 Other Purchased Professional and Technical Services	1,539.58	25,812.84		27,352.42
Total Purchased Professional and Technical Services	\$90,862.52	\$279,429.10		\$370,291.62
500 Other Purchased Services				
561 Tuition To Other School Districts Within the State	26,674.62	77,415.01		104,089.63
563 Tuition To Nonpublic Schools	2,268.00	3,528.00		5,796.00
564 Tuition To Career and Technology Centers		23,913.45		23,913.45
Total Other Purchased Services	\$28,942.62	\$104,856.46		\$133,799.08
600 Supplies				
610 General Supplies		30,171.00		30,171.00
Total Supplies		\$30,171.00		\$30,171.00
Total 1400 Other Instructional Programs – Elementary / Secondary	\$121,022.30	\$485,890.03		\$606,912.33

General Fund (10)

1410 Drivers' Education

100 Personnel Services – Salaries

	<u>Elementary</u>	<u>Secondary</u>	<u>Federal</u>	<u>Total</u>
100 Personnel Services – Salaries		36,668.98		36,668.98
Total Personnel Services – Salaries		\$36,668.98		\$36,668.98

200 Personnel Services – Employee Benefits

210 Group Insurance – Contracted Provider		22.24		22.24
220 Social Security Contributions		2,755.40		2,755.40
230 PSERS Retirement Contributions		12,246.14		12,246.14
250 Unemployment Compensation		7.64		7.64
260 Workers' Compensation		269.25		269.25
270 Group Insurance – Self-Insurance		8,961.74		8,961.74
Total Personnel Services – Employee Benefits		\$24,262.41		\$24,262.41

300 Purchased Professional and Technical Services

390 Other Purchased Professional and Technical Services		5,400.00		5,400.00
Total Purchased Professional and Technical Services		\$5,400.00		\$5,400.00
Total 1410 Drivers' Education		\$66,331.39		\$66,331.39

General Fund (10)

	<u>Elementary</u>	<u>Secondary</u>	<u>Federal</u>	<u>Total</u>
1430 Homebound Instruction				
100 Personnel Services – Salaries				
100 Personnel Services – Salaries	857.50	7,385.00		8,242.50
Total Personnel Services – Salaries	\$857.50	\$7,385.00		\$8,242.50
200 Personnel Services – Employee Benefits				
220 Social Security Contributions	64.05	556.32		620.37
230 PSERS Retirement Contributions	286.66	2,468.78		2,755.44
250 Unemployment Compensation		21.31		21.31
260 Workers' Compensation	8.95	70.67		79.62
Total Personnel Services – Employee Benefits	\$359.66	\$3,117.08		\$3,476.74
Total 1430 Homebound Instruction	\$1,217.16	\$10,502.08		\$11,719.24

General Fund (10)

	<u>Elementary</u>	<u>Secondary</u>	<u>Federal</u>	<u>Total</u>
1440 Alternative Regular Education Programs				
300 <u>Purchased Professional and Technical Services</u>				
322 Professional Educational Services – Ius	44,661.47	191,402.73		236,064.20
329 Professional Educational Services – Other	44,661.47	62,213.53		106,875.00
390 Other Purchased Professional and Technical Services	1,539.58	20,412.84		21,952.42
Total Purchased Professional and Technical Services	\$90,862.52	\$274,029.10		\$364,891.62
500 <u>Other Purchased Services</u>				
561 Tuition To Other School Districts Within the State	26,674.62	77,415.01		104,089.63
563 Tuition To Nonpublic Schools	2,268.00	3,528.00		5,796.00
564 Tuition To Career and Technology Centers		23,913.45		23,913.45
Total Other Purchased Services	\$28,942.62	\$104,856.46		\$133,799.08
600 <u>Supplies</u>				
610 General Supplies		30,171.00		30,171.00
Total Supplies		\$30,171.00		\$30,171.00
Total 1440 Alternative Regular Education Programs	\$119,805.14	\$409,056.56		\$528,861.70

LEA : 105253903 General McLane SD

Printed 1/31/2020 11:46:14 AM

General Fund (10)

1441 Adjudicated / Court-Placed Programs

300 Purchased Professional and Technical Services

	<u>Elementary</u>	<u>Secondary</u>	<u>Federal</u>	<u>Total</u>
322 Professional Educational Services – Ius	44,661.47			44,661.47
329 Professional Educational Services – Other	44,661.47			44,661.47
390 Other Purchased Professional and Technical Services	1,539.58	20,412.84		21,952.42
Total Purchased Professional and Technical Services	\$90,862.52	\$20,412.84		\$111,275.36

500 Other Purchased Services

561 Tuition To Other School Districts Within the State	26,674.62	77,415.01		104,089.63
563 Tuition To Nonpublic Schools	2,268.00	3,528.00		5,796.00
564 Tuition To Career and Technology Centers		23,913.45		23,913.45
Total Other Purchased Services	\$28,942.62	\$104,856.46		\$133,799.08

600 Supplies

610 General Supplies		30,171.00		30,171.00
Total Supplies		\$30,171.00		\$30,171.00
Total 1441 Adjudicated / Court-Placed Programs	\$119,805.14	\$155,440.30		\$275,245.44

LEA : 105253903 General McLane SD

Printed 1/31/2020 11:46:14 AM

General Fund (10)

	<u>Elementary</u>	<u>Secondary</u>	<u>Federal</u>	<u>Total</u>
1442 Alternative Education Programs				
300 <u>Purchased Professional and Technical Services</u>				
322 Professional Educational Services – Ius		191,402.73		191,402.73
329 Professional Educational Services – Other		62,213.53		62,213.53
Total Purchased Professional and Technical Services		\$253,616.26		\$253,616.26
Total 1442 Alternative Education Programs		\$253,616.26		\$253,616.26

LEA : 105253903 General McLane SD

Printed 1/31/2020 11:46:22 AM

General Fund (10)

2000 Support Services

Total

100 Personnel Services – Salaries

100 Personnel Services – Salaries 4,930,615.78

Total Personnel Services – Salaries \$4,930,615.78

200 Personnel Services – Employee Benefits

210 Group Insurance – Contracted Provider 4,590.45

220 Social Security Contributions 373,552.19

230 PSERS Retirement Contributions 1,637,377.30

240 Tuition Reimbursement 78,677.11

250 Unemployment Compensation 1,898.62

260 Workers' Compensation 39,493.31

270 Group Insurance – Self-Insurance 965,666.37

Total Personnel Services – Employee Benefits \$3,101,255.35

300 Purchased Professional and Technical Services

310 Official / Administrative Services 90,559.82

330 Other Professional Services 89,593.54

340 Technical Services 18,030.70

350 Security / Safety Services 49,518.41

Total Purchased Professional and Technical Services \$247,702.47

400 Purchased Property Services

410 Cleaning Services 21,575.50

420 Utility Services 485,575.10

430 Repairs and Maintenance Services 142,644.62

Total Purchased Property Services \$649,795.22

500 Other Purchased Services

516 Student Transportation Services From the IU 146.16

520 Insurance – General 21,218.00

522 Automotive Liability Insurance 50,135.00

523 General Property and Liability Insurance 78,199.00

530 Communications 26,742.65

541 Advertising Related to Federal Grant Awards 8,153.20

580 Travel 21,390.81

595 IU Payments By Withholding 51,784.18

599 Other Miscellaneous Purchased Services 7,027.88

Total Other Purchased Services \$264,796.88

600 Supplies

610 General Supplies 611,551.30

620 Energy 176,503.40

630 Food 21.85

640 Books and Periodicals 67,555.01

Total Supplies \$855,631.56

700 Property

762 Capitalized Equipment - Replacement 34,793.92

Total Property \$34,793.92

LEA : 105253903 General McLane SD

Printed 1/31/2020 11:46:22 AM

General Fund (10)

2000 Support Services

800 Other Objects

810 Dues and Fees

Total Other Objects

Total 2000 Support Services

Total

23,379.60

\$23,379.60

\$10,107,970.78

General Fund (10)

2100 Support Services – Students

	<u>Elementary</u>	<u>Secondary</u>	<u>Federal</u>	<u>Total</u>
100 Personnel Services – Salaries				
100 Personnel Services – Salaries	148,873.50	396,200.87		697,116.80
Total Personnel Services – Salaries	\$148,873.50	\$396,200.87		\$697,116.80
200 Personnel Services – Employee Benefits				
210 Group Insurance – Contracted Provider	181.19	340.14		635.80
220 Social Security Contributions	11,223.73	29,721.56		52,392.60
230 PSERS Retirement Contributions	49,720.15	132,351.39		232,849.44
250 Unemployment Compensation	123.02	187.18		339.09
260 Workers' Compensation	1,270.15	3,220.79		5,559.51
270 Group Insurance – Self-Insurance	28,273.36	88,578.40		150,306.87
Total Personnel Services – Employee Benefits	\$90,791.60	\$254,399.46		\$442,083.31
300 Purchased Professional and Technical Services				
330 Other Professional Services		8,000.00		8,000.00
Total Purchased Professional and Technical Services		\$8,000.00		\$8,000.00
500 Other Purchased Services				
580 Travel	364.56	1,685.59		2,050.15
Total Other Purchased Services	\$364.56	\$1,685.59		\$2,050.15
600 Supplies				
610 General Supplies	4,994.22	8,196.90		16,491.12
Total Supplies	\$4,994.22	\$8,196.90		\$16,491.12
800 Other Objects				
810 Dues and Fees	355.00	365.00		720.00
Total Other Objects	\$355.00	\$365.00		\$720.00
Total 2100 Support Services – Students	\$245,378.88	\$668,847.82		\$1,166,461.38

General Fund (10)

2120 Guidance Services

100 Personnel Services – Salaries

	<u>Elementary</u>	<u>Secondary</u>	<u>Federal</u>	<u>Total</u>
100 Personnel Services – Salaries	73,394.00	320,721.37		394,115.37

Total Personnel Services – Salaries	\$73,394.00	\$320,721.37		\$394,115.37
--	--------------------	---------------------	--	---------------------

200 Personnel Services – Employee Benefits

210 Group Insurance – Contracted Provider	44.47	203.42		247.89
---	-------	--------	--	--------

220 Social Security Contributions	5,515.36	24,013.82		29,529.18
-----------------------------------	----------	-----------	--	-----------

230 PSERS Retirement Contributions	24,511.37	107,142.61		131,653.98
------------------------------------	-----------	------------	--	------------

250 Unemployment Compensation	15.30	79.56		94.86
-------------------------------	-------	-------	--	-------

260 Workers' Compensation	543.38	2,494.02		3,037.40
---------------------------	--------	----------	--	----------

270 Group Insurance – Self-Insurance	16,044.39	76,349.65		92,394.04
--------------------------------------	-----------	-----------	--	-----------

Total Personnel Services – Employee Benefits	\$46,674.27	\$210,283.08		\$256,957.35
---	--------------------	---------------------	--	---------------------

300 Purchased Professional and Technical Services

330 Other Professional Services		8,000.00		8,000.00
---------------------------------	--	----------	--	----------

Total Purchased Professional and Technical Services		\$8,000.00		\$8,000.00
--	--	-------------------	--	-------------------

500 Other Purchased Services

580 Travel		1,685.59		1,685.59
------------	--	----------	--	----------

Total Other Purchased Services		\$1,685.59		\$1,685.59
---------------------------------------	--	-------------------	--	-------------------

600 Supplies

610 General Supplies	915.32	4,937.89		5,853.21
----------------------	--------	----------	--	----------

Total Supplies	\$915.32	\$4,937.89		\$5,853.21
-----------------------	-----------------	-------------------	--	-------------------

Total 2120 Guidance Services	\$120,983.59	\$545,627.93		\$666,611.52
-------------------------------------	---------------------	---------------------	--	---------------------

General Fund (10)

	<u>Elementary</u>	<u>Secondary</u>	<u>Federal</u>	<u>Total</u>
2140 Psychological Services				
100 Personnel Services – Salaries				
100 Personnel Services – Salaries	75,479.50	75,479.50		150,959.00
Total Personnel Services – Salaries	\$75,479.50	\$75,479.50		\$150,959.00
200 Personnel Services – Employee Benefits				
210 Group Insurance – Contracted Provider	136.72	136.72		273.44
220 Social Security Contributions	5,708.37	5,707.74		11,416.11
230 PSERS Retirement Contributions	25,208.78	25,208.78		50,417.56
250 Unemployment Compensation	107.72	107.62		215.34
260 Workers' Compensation	726.77	726.77		1,453.54
270 Group Insurance – Self-Insurance	12,228.97	12,228.75		24,457.72
Total Personnel Services – Employee Benefits	\$44,117.33	\$44,116.38		\$88,233.71
500 Other Purchased Services				
580 Travel	364.56			364.56
Total Other Purchased Services	\$364.56			\$364.56
600 Supplies				
610 General Supplies	4,078.90	3,259.01		7,337.91
Total Supplies	\$4,078.90	\$3,259.01		\$7,337.91
800 Other Objects				
810 Dues and Fees	355.00	365.00		720.00
Total Other Objects	\$355.00	\$365.00		\$720.00
Total 2140 Psychological Services	\$124,395.29	\$123,219.89		\$247,615.18

LEA : 105253903 General McLane SD

Printed 1/31/2020 11:46:22 AM

General Fund (10)

2160 Social Work Services

Elementary

Secondary

Federal

Total

100 Personnel Services – Salaries

100 Personnel Services – Salaries

113,464.00

Total Personnel Services – Salaries

\$113,464.00

200 Personnel Services – Employee Benefits

210 Group Insurance – Contracted Provider

88.94

220 Social Security Contributions

8,580.26

230 PSERS Retirement Contributions

37,893.36

250 Unemployment Compensation

30.60

260 Workers' Compensation

841.94

270 Group Insurance – Self-Insurance

18,731.24

Total Personnel Services – Employee Benefits

\$66,166.34

Total 2160 Social Work Services

\$179,630.34

General Fund (10)

2170 Student Accounting Services

Elementary

Secondary

Federal

Total

100 Personnel Services – Salaries

100 Personnel Services – Salaries

38,578.43

Total Personnel Services – Salaries

\$38,578.43

200 Personnel Services – Employee Benefits

210 Group Insurance – Contracted Provider

25.53

220 Social Security Contributions

2,867.05

230 PSERS Retirement Contributions

12,884.54

250 Unemployment Compensation

(1.71)

260 Workers' Compensation

226.63

270 Group Insurance – Self-Insurance

14,723.87

Total Personnel Services – Employee Benefits

\$30,725.91

600 Supplies

610 General Supplies

3,300.00

Total Supplies

\$3,300.00

Total 2170 Student Accounting Services

\$72,604.34

LEA : 105253903 General McLane SD

Printed 1/31/2020 11:46:22 AM

General Fund (10)

	<u>Elementary</u>	<u>Secondary</u>	<u>Federal</u>	<u>Total</u>
2200 Support Services – Instructional Staff				
100 Personnel Services – Salaries				
100 Personnel Services – Salaries	354,264.08	289,363.70		643,627.78
Total Personnel Services – Salaries	\$354,264.08	\$289,363.70		\$643,627.78
200 Personnel Services – Employee Benefits				
210 Group Insurance – Contracted Provider	247.97	219.90		467.87
220 Social Security Contributions	26,222.87	21,360.81		47,583.68
230 PSERS Retirement Contributions	118,996.42	94,730.93		213,727.35
240 Tuition Reimbursement	41,928.05	36,749.06		78,677.11
250 Unemployment Compensation	116.25	123.62		239.87
260 Workers' Compensation	2,822.12	2,375.17		5,197.29
270 Group Insurance – Self-Insurance	82,248.89	66,203.78		148,452.67
Total Personnel Services – Employee Benefits	\$272,582.57	\$221,763.27		\$494,345.84
300 Purchased Professional and Technical Services				
330 Other Professional Services		9,914.87		9,914.87
340 Technical Services	647.50	482.50		1,130.00
Total Purchased Professional and Technical Services	\$647.50	\$10,397.37		\$11,044.87
400 Purchased Property Services				
430 Repairs and Maintenance Services	31,439.36	23,592.76		55,032.12
Total Purchased Property Services	\$31,439.36	\$23,592.76		\$55,032.12
500 Other Purchased Services				
580 Travel	4,096.67	2,778.35		6,875.02
Total Other Purchased Services	\$4,096.67	\$2,778.35		\$6,875.02
600 Supplies				
610 General Supplies	72,701.20	71,878.64		144,579.84
640 Books and Periodicals	42,611.79	24,943.22		67,555.01
Total Supplies	\$115,312.99	\$96,821.86		\$212,134.85
700 Property				
762 Capitalized Equipment - Replacement	6,600.80	118.87		6,719.67
Total Property	\$6,600.80	\$118.87		\$6,719.67
800 Other Objects				
810 Dues and Fees	245.00	245.00		490.00
Total Other Objects	\$245.00	\$245.00		\$490.00
Total 2200 Support Services – Instructional Staff	\$785,188.97	\$645,081.18		\$1,430,270.15

General Fund (10)

2220 Technology Support Services

	<u>Elementary</u>	<u>Secondary</u>	<u>Federal</u>	<u>Total</u>
100 Personnel Services – Salaries				
100 Personnel Services – Salaries	103,452.34	103,452.50		206,904.84
Total Personnel Services – Salaries	\$103,452.34	\$103,452.50		\$206,904.84
200 Personnel Services – Employee Benefits				
210 Group Insurance – Contracted Provider	65.72	65.72		131.44
220 Social Security Contributions	7,442.69	7,442.02		14,884.71
230 PSERS Retirement Contributions	34,551.96	34,551.79		69,103.75
250 Unemployment Compensation	40.96	40.93		81.89
260 Workers' Compensation	880.74	880.26		1,761.00
270 Group Insurance – Self-Insurance	32,597.67	32,597.14		65,194.81
Total Personnel Services – Employee Benefits	\$75,579.74	\$75,577.86		\$151,157.60
400 Purchased Property Services				
430 Repairs and Maintenance Services	31,439.36	23,592.76		55,032.12
Total Purchased Property Services	\$31,439.36	\$23,592.76		\$55,032.12
500 Other Purchased Services				
580 Travel	1,680.31	1,650.61		3,330.92
Total Other Purchased Services	\$1,680.31	\$1,650.61		\$3,330.92
600 Supplies				
610 General Supplies	51,962.54	53,490.98		105,453.52
Total Supplies	\$51,962.54	\$53,490.98		\$105,453.52
700 Property				
762 Capitalized Equipment - Replacement	4,993.52			4,993.52
Total Property	\$4,993.52			\$4,993.52
Total 2220 Technology Support Services	\$269,107.81	\$257,764.71		\$526,872.52

General Fund (10)

	<u>Elementary</u>	<u>Secondary</u>	<u>Federal</u>	<u>Total</u>
2250 School Library Services				
100 Personnel Services – Salaries				
100 Personnel Services – Salaries	172,184.71	118,119.24		290,303.95
Total Personnel Services – Salaries	\$172,184.71	\$118,119.24		\$290,303.95
200 Personnel Services – Employee Benefits				
210 Group Insurance – Contracted Provider	113.89	85.82		199.71
220 Social Security Contributions	12,696.07	8,857.54		21,553.61
230 PSERS Retirement Contributions	57,506.98	39,478.42		96,985.40
250 Unemployment Compensation	40.19	17.28		57.47
260 Workers' Compensation	1,286.23	931.95		2,218.18
270 Group Insurance – Self-Insurance	40,689.37	24,644.90		65,334.27
Total Personnel Services – Employee Benefits	\$112,332.73	\$74,015.91		\$186,348.64
300 Purchased Professional and Technical Services				
340 Technical Services	647.50	482.50		1,130.00
Total Purchased Professional and Technical Services	\$647.50	\$482.50		\$1,130.00
500 Other Purchased Services				
580 Travel	20.00			20.00
Total Other Purchased Services	\$20.00			\$20.00
600 Supplies				
610 General Supplies	2,655.88	632.47		3,288.35
640 Books and Periodicals	42,545.88	24,877.31		67,423.19
Total Supplies	\$45,201.76	\$25,509.78		\$70,711.54
700 Property				
762 Capitalized Equipment - Replacement	1,607.28	118.87		1,726.15
Total Property	\$1,607.28	\$118.87		\$1,726.15
Total 2250 School Library Services	\$331,993.98	\$218,246.30		\$550,240.28

General Fund (10)

	<u>Elementary</u>	<u>Secondary</u>	<u>Federal</u>	<u>Total</u>
2260 Instruction and Curriculum Development Services				
100 Personnel Services – Salaries				
100 Personnel Services – Salaries	49,599.03	56,926.96		106,525.99
Total Personnel Services – Salaries	\$49,599.03	\$56,926.96		\$106,525.99
200 Personnel Services – Employee Benefits				
210 Group Insurance – Contracted Provider	68.36	68.36		136.72
220 Social Security Contributions	3,863.39	4,229.86		8,093.25
230 PSERS Retirement Contributions	17,411.59	17,411.33		34,822.92
250 Unemployment Compensation	7.65	55.62		63.27
260 Workers' Compensation	423.54	476.35		899.89
270 Group Insurance – Self-Insurance	8,961.85	8,961.74		17,923.59
Total Personnel Services – Employee Benefits	\$30,736.38	\$31,203.26		\$61,939.64
300 Purchased Professional and Technical Services				
330 Other Professional Services		9,914.87		9,914.87
Total Purchased Professional and Technical Services		\$9,914.87		\$9,914.87
500 Other Purchased Services				
580 Travel	155.38	155.38		310.76
Total Other Purchased Services	\$155.38	\$155.38		\$310.76
600 Supplies				
610 General Supplies	5,125.46	4,797.87		9,923.33
Total Supplies	\$5,125.46	\$4,797.87		\$9,923.33
800 Other Objects				
810 Dues and Fees	245.00	245.00		490.00
Total Other Objects	\$245.00	\$245.00		\$490.00
Total 2260 Instruction and Curriculum Development Services	\$85,861.25	\$103,243.34		\$189,104.59

General Fund (10)

	<u>Elementary</u>	<u>Secondary</u>	<u>Federal</u>	<u>Total</u>
2270 Instructional Staff Professional Development Services				
100 Personnel Services – Salaries				
100 Personnel Services – Salaries	29,028.00	10,865.00		39,893.00
Total Personnel Services – Salaries	\$29,028.00	\$10,865.00		\$39,893.00
200 Personnel Services – Employee Benefits				
220 Social Security Contributions	2,220.72	831.39		3,052.11
230 PSERS Retirement Contributions	9,525.89	3,289.39		12,815.28
240 Tuition Reimbursement	41,928.05	36,749.06		78,677.11
250 Unemployment Compensation	27.45	9.79		37.24
260 Workers' Compensation	231.61	86.61		318.22
Total Personnel Services – Employee Benefits	\$53,933.72	\$40,966.24		\$94,899.96
500 Other Purchased Services				
580 Travel	2,240.98	972.36		3,213.34
Total Other Purchased Services	\$2,240.98	\$972.36		\$3,213.34
600 Supplies				
610 General Supplies	12,957.32	12,957.32		25,914.64
640 Books and Periodicals	65.91	65.91		131.82
Total Supplies	\$13,023.23	\$13,023.23		\$26,046.46
Total 2270 Instructional Staff Professional Development Services	\$98,225.93	\$65,826.83		\$164,052.76

General Fund (10)

2300 Support Services – Administration

	<u>Elementary</u>	<u>Secondary</u>	<u>Federal</u>	<u>Total</u>
100 Personnel Services – Salaries				
100 Personnel Services – Salaries	467,535.18	392,766.31		1,099,625.42
Total Personnel Services – Salaries	\$467,535.18	\$392,766.31		\$1,099,625.42
200 Personnel Services – Employee Benefits				
210 Group Insurance – Contracted Provider	586.55	488.21		1,439.36
220 Social Security Contributions	35,052.04	29,425.11		86,235.99
230 PSERS Retirement Contributions	156,135.71	131,772.93		365,758.06
250 Unemployment Compensation	175.40	57.54		233.40
260 Workers' Compensation	3,771.03	3,186.28		8,859.56
270 Group Insurance – Self-Insurance	63,820.18	60,257.85		164,906.76
Total Personnel Services – Employee Benefits	\$259,540.91	\$225,187.92		\$627,433.13
300 Purchased Professional and Technical Services				
310 Official / Administrative Services				90,559.82
330 Other Professional Services				71,558.67
340 Technical Services				11,135.21
Total Purchased Professional and Technical Services				\$173,253.70
500 Other Purchased Services				
520 Insurance – General				21,218.00
530 Communications	6,112.73	6,344.38		12,457.11
580 Travel	2,768.70	2,154.63		6,919.83
Total Other Purchased Services	\$8,881.43	\$8,499.01		\$40,594.94
600 Supplies				
610 General Supplies	21,957.33	19,048.97		55,511.54
630 Food	10.93	10.92		21.85
Total Supplies	\$21,968.26	\$19,059.89		\$55,533.39
800 Other Objects				
810 Dues and Fees	2,103.50	2,526.50		21,365.85
Total Other Objects	\$2,103.50	\$2,526.50		\$21,365.85
Total 2300 Support Services – Administration	\$760,029.28	\$648,039.63		\$2,017,806.43

General Fund (10)

2310 Board Services

	<u>Elementary</u>	<u>Secondary</u>	<u>Federal</u>	<u>Total</u>
100 Personnel Services – Salaries				
100 Personnel Services – Salaries				1,000.00
Total Personnel Services – Salaries				\$1,000.00
200 Personnel Services – Employee Benefits				
210 Group Insurance – Contracted Provider				0.49
220 Social Security Contributions				75.38
230 PSERS Retirement Contributions				333.92
250 Unemployment Compensation				0.32
260 Workers' Compensation				7.27
270 Group Insurance – Self-Insurance				154.93
Total Personnel Services – Employee Benefits				\$572.31
300 Purchased Professional and Technical Services				
310 Official / Administrative Services				2,400.00
330 Other Professional Services				24,724.50
340 Technical Services				2,412.72
Total Purchased Professional and Technical Services				\$29,537.22
500 Other Purchased Services				
520 Insurance – General				21,218.00
Total Other Purchased Services				\$21,218.00
600 Supplies				
610 General Supplies				2,340.62
Total Supplies				\$2,340.62
800 Other Objects				
810 Dues and Fees				10,786.65
Total Other Objects				\$10,786.65
Total 2310 Board Services				\$65,454.80

General Fund (10)

	<u>Elementary</u>	<u>Secondary</u>	<u>Federal</u>	<u>Total</u>
2330 Tax Assessment and Collection Services				
200 Personnel Services – Employee Benefits				
220 Social Security Contributions				4,706.50
Total Personnel Services – Employee Benefits				\$4,706.50
300 Purchased Professional and Technical Services				
310 Official / Administrative Services				88,159.82
340 Technical Services				6,309.76
Total Purchased Professional and Technical Services				\$94,469.58
600 Supplies				
610 General Supplies				3,644.48
Total Supplies				\$3,644.48
Total 2330 Tax Assessment and Collection Services				\$102,820.56

LEA : 105253903 General McLane SD

Printed 1/31/2020 11:46:22 AM

General Fund (10)

2350 Legal and Accounting Services

Elementary

Secondary

Federal

Total

300 Purchased Professional and Technical Services

330 Other Professional Services

46,834.17

Total Purchased Professional and Technical Services

\$46,834.17

Total 2350 Legal and Accounting Services

\$46,834.17

General Fund (10)

	<u>Elementary</u>	<u>Secondary</u>	<u>Federal</u>	<u>Total</u>
2360 Office of the Superintendent / Executive Director Services				
100 Personnel Services – Salaries				
100 Personnel Services – Salaries				238,323.93
Total Personnel Services – Salaries				\$238,323.93
200 Personnel Services – Employee Benefits				
210 Group Insurance – Contracted Provider				364.11
220 Social Security Contributions				16,976.96
230 PSERS Retirement Contributions				77,515.50
250 Unemployment Compensation				0.14
260 Workers' Compensation				1,894.98
270 Group Insurance – Self-Insurance				40,673.80
Total Personnel Services – Employee Benefits				\$137,425.49
300 Purchased Professional and Technical Services				
340 Technical Services				2,412.73
Total Purchased Professional and Technical Services				\$2,412.73
500 Other Purchased Services				
580 Travel				1,996.50
Total Other Purchased Services				\$1,996.50
600 Supplies				
610 General Supplies				8,520.14
Total Supplies				\$8,520.14
800 Other Objects				
810 Dues and Fees				5,949.20
Total Other Objects				\$5,949.20
Total 2360 Office of the Superintendent / Executive Director Services				\$394,627.99

General Fund (10)

2380 Office of the Principal Services

100 Personnel Services – Salaries

	<u>Elementary</u>	<u>Secondary</u>	<u>Federal</u>	<u>Total</u>
100 Personnel Services – Salaries	467,535.18	392,766.31		860,301.49
Total Personnel Services – Salaries	\$467,535.18	\$392,766.31		\$860,301.49

200 Personnel Services – Employee Benefits

210 Group Insurance – Contracted Provider	586.55	488.21		1,074.76
220 Social Security Contributions	35,052.04	29,425.11		64,477.15
230 PSERS Retirement Contributions	156,135.71	131,772.93		287,908.64
250 Unemployment Compensation	175.40	57.54		232.94
260 Workers' Compensation	3,771.03	3,186.28		6,957.31
270 Group Insurance – Self-Insurance	63,820.18	60,257.85		124,078.03
Total Personnel Services – Employee Benefits	\$259,540.91	\$225,187.92		\$484,728.83

500 Other Purchased Services

530 Communications	6,112.73	6,344.38		12,457.11
580 Travel	2,768.70	2,154.63		4,923.33
Total Other Purchased Services	\$8,881.43	\$8,499.01		\$17,380.44

600 Supplies

610 General Supplies	21,957.33	19,048.97		41,006.30
630 Food	10.93	10.92		21.85
Total Supplies	\$21,968.26	\$19,059.89		\$41,028.15

800 Other Objects

810 Dues and Fees	2,103.50	2,526.50		4,630.00
Total Other Objects	\$2,103.50	\$2,526.50		\$4,630.00

Total 2380 Office of the Principal Services

	\$760,029.28	\$648,039.63		\$1,408,068.91
--	---------------------	---------------------	--	-----------------------

General Fund (10)

	<u>Elementary</u>	<u>Secondary</u>	<u>Federal</u>	<u>Total</u>
2400 Support Services – Pupil Health				
100 Personnel Services – Salaries				
100 Personnel Services – Salaries				271,663.50
Total Personnel Services – Salaries				\$271,663.50
200 Personnel Services – Employee Benefits				
210 Group Insurance – Contracted Provider				177.88
220 Social Security Contributions				20,182.47
230 PSERS Retirement Contributions				90,751.86
250 Unemployment Compensation				58.52
260 Workers' Compensation				2,059.43
270 Group Insurance – Self-Insurance				69,815.13
Total Personnel Services – Employee Benefits				\$183,045.29
300 Purchased Professional and Technical Services				
330 Other Professional Services				120.00
Total Purchased Professional and Technical Services				\$120.00
600 Supplies				
610 General Supplies				7,995.22
Total Supplies				\$7,995.22
Total 2400 Support Services – Pupil Health				\$462,824.01

General Fund (10)

2440 Nursing Services

	<u>Elementary</u>	<u>Secondary</u>	<u>Federal</u>	<u>Total</u>
100 Personnel Services – Salaries				
100 Personnel Services – Salaries				271,663.50
Total Personnel Services – Salaries				\$271,663.50
200 Personnel Services – Employee Benefits				
210 Group Insurance – Contracted Provider				177.88
220 Social Security Contributions				20,182.47
230 PSERS Retirement Contributions				90,751.86
250 Unemployment Compensation				58.52
260 Workers' Compensation				2,059.43
270 Group Insurance – Self-Insurance				69,815.13
Total Personnel Services – Employee Benefits				\$183,045.29
300 Purchased Professional and Technical Services				
330 Other Professional Services				120.00
Total Purchased Professional and Technical Services				\$120.00
600 Supplies				
610 General Supplies				7,995.22
Total Supplies				\$7,995.22
Total 2440 Nursing Services				\$462,824.01

General Fund (10)

	<u>Elementary</u>	<u>Secondary</u>	<u>Federal</u>	<u>Total</u>
2500 Support Services – Business				
100 Personnel Services – Salaries				
100 Personnel Services – Salaries				214,085.84
Total Personnel Services – Salaries				\$214,085.84
200 Personnel Services – Employee Benefits				
210 Group Insurance – Contracted Provider				210.43
220 Social Security Contributions				16,067.87
230 PSERS Retirement Contributions				71,506.76
250 Unemployment Compensation				18.92
260 Workers' Compensation				1,678.74
270 Group Insurance – Self-Insurance				44,977.93
Total Personnel Services – Employee Benefits				\$134,460.65
300 Purchased Professional and Technical Services				
340 Technical Services				2,362.72
Total Purchased Professional and Technical Services				\$2,362.72
500 Other Purchased Services				
530 Communications				3,233.30
541 Advertising Related to Federal Grant Awards				8,153.20
580 Travel				389.20
Total Other Purchased Services				\$11,775.70
600 Supplies				
610 General Supplies				15,419.74
Total Supplies				\$15,419.74
800 Other Objects				
810 Dues and Fees				250.00
Total Other Objects				\$250.00
Total 2500 Support Services – Business				\$378,354.65

General Fund (10)

2510 Fiscal Services

Elementary

Secondary

Federal

Total

100 Personnel Services – Salaries

100 Personnel Services – Salaries 214,085.84

Total Personnel Services – Salaries \$214,085.84

200 Personnel Services – Employee Benefits

210 Group Insurance – Contracted Provider 210.43

220 Social Security Contributions 16,067.87

230 PSERS Retirement Contributions 71,506.76

250 Unemployment Compensation 18.92

260 Workers' Compensation 1,678.74

270 Group Insurance – Self-Insurance 44,977.93

Total Personnel Services – Employee Benefits \$134,460.65

300 Purchased Professional and Technical Services

340 Technical Services 2,362.72

Total Purchased Professional and Technical Services \$2,362.72

500 Other Purchased Services

530 Communications 3,233.30

541 Advertising Related to Federal Grant Awards 8,153.20

580 Travel 389.20

Total Other Purchased Services \$11,775.70

600 Supplies

610 General Supplies 15,419.74

Total Supplies \$15,419.74

800 Other Objects

810 Dues and Fees 250.00

Total Other Objects \$250.00

Total 2510 Fiscal Services \$378,354.65

General Fund (10)

	<u>Elementary</u>	<u>Secondary</u>	<u>Federal</u>	<u>Total</u>
2511 Supervision of Fiscal Services - Head of Component				
100 Personnel Services – Salaries				
100 Personnel Services – Salaries				214,085.84
Total Personnel Services – Salaries				\$214,085.84
200 Personnel Services – Employee Benefits				
210 Group Insurance – Contracted Provider				210.43
220 Social Security Contributions				16,067.87
230 PSERS Retirement Contributions				71,506.76
250 Unemployment Compensation				18.92
260 Workers' Compensation				1,678.74
270 Group Insurance – Self-Insurance				44,977.93
Total Personnel Services – Employee Benefits				\$134,460.65
300 Purchased Professional and Technical Services				
340 Technical Services				2,362.72
Total Purchased Professional and Technical Services				\$2,362.72
500 Other Purchased Services				
530 Communications				3,233.30
541 Advertising Related to Federal Grant Awards				8,153.20
580 Travel				389.20
Total Other Purchased Services				\$11,775.70
600 Supplies				
610 General Supplies				15,419.74
Total Supplies				\$15,419.74
800 Other Objects				
810 Dues and Fees				250.00
Total Other Objects				\$250.00
Total 2511 Supervision of Fiscal Services - Head of Component				\$378,354.65

General Fund (10)

	<u>Elementary</u>	<u>Secondary</u>	<u>Federal</u>	<u>Total</u>
2600 Operation and Maintenance of Plant Services				
100 Personnel Services – Salaries				
100 Personnel Services – Salaries				1,017,676.20
Total Personnel Services – Salaries				\$1,017,676.20
200 Personnel Services – Employee Benefits				
210 Group Insurance – Contracted Provider				790.43
220 Social Security Contributions				75,728.07
230 PSERS Retirement Contributions				334,341.42
250 Unemployment Compensation				286.74
260 Workers' Compensation				8,107.23
270 Group Insurance – Self-Insurance				281,064.57
Total Personnel Services – Employee Benefits				\$700,318.46
300 Purchased Professional and Technical Services				
350 Security / Safety Services				49,518.41
Total Purchased Professional and Technical Services				\$49,518.41
400 Purchased Property Services				
410 Cleaning Services				17,079.26
420 Utility Services				471,345.43
430 Repairs and Maintenance Services				87,512.80
Total Purchased Property Services				\$575,937.49
500 Other Purchased Services				
523 General Property and Liability Insurance				78,199.00
530 Communications				11,103.86
580 Travel				1,974.48
599 Other Miscellaneous Purchased Services				100.00
Total Other Purchased Services				\$91,377.34
600 Supplies				
610 General Supplies	143,807.92	127,185.51		270,993.43
Total Supplies	\$143,807.92	\$127,185.51		\$270,993.43
700 Property				
762 Capitalized Equipment - Replacement				28,074.25
Total Property				\$28,074.25
800 Other Objects				
810 Dues and Fees				357.12
Total Other Objects				\$357.12
Total 2600 Operation and Maintenance of Plant Services	\$143,807.92	\$127,185.51		\$2,734,252.70

General Fund (10)

	<u>Elementary</u>	<u>Secondary</u>	<u>Federal</u>	<u>Total</u>
2610 Supervision of Operation and Maintenance of Plant Services				
100 Personnel Services – Salaries				
100 Personnel Services – Salaries				79,958.00
Total Personnel Services – Salaries				\$79,958.00
200 Personnel Services – Employee Benefits				
210 Group Insurance – Contracted Provider				116.95
220 Social Security Contributions				6,048.85
230 PSERS Retirement Contributions				26,704.51
250 Unemployment Compensation				15.29
260 Workers' Compensation				649.08
270 Group Insurance – Self-Insurance				16,044.40
Total Personnel Services – Employee Benefits				\$49,579.08
Total 2610 Supervision of Operation and Maintenance of Plant Services				\$129,537.08

General Fund (10)

	<u>Elementary</u>	<u>Secondary</u>	<u>Federal</u>	<u>Total</u>
2611 Supervision of Operation and Maintenance of Plant Services – Head of Component				
100 Personnel Services – Salaries				
100 Personnel Services – Salaries				79,958.00
Total Personnel Services – Salaries				\$79,958.00
200 Personnel Services – Employee Benefits				
210 Group Insurance – Contracted Provider				116.95
220 Social Security Contributions				6,048.85
230 PSERS Retirement Contributions				26,704.51
250 Unemployment Compensation				15.29
260 Workers' Compensation				649.08
270 Group Insurance – Self-Insurance				16,044.40
Total Personnel Services – Employee Benefits				\$49,579.08
Total 2611 Supervision of Operation and Maintenance of Plant Services – Head of Component				\$129,537.08

General Fund (10)

	<u>Elementary</u>	<u>Secondary</u>	<u>Federal</u>	<u>Total</u>
2620 Operation of Buildings Services				
100 Personnel Services – Salaries				
100 Personnel Services – Salaries				891,424.65
Total Personnel Services – Salaries				\$891,424.65
200 Personnel Services – Employee Benefits				
210 Group Insurance – Contracted Provider				647.95
220 Social Security Contributions				66,187.45
230 PSERS Retirement Contributions				292,175.07
250 Unemployment Compensation				256.16
260 Workers' Compensation				7,085.92
270 Group Insurance – Self-Insurance				258,077.21
Total Personnel Services – Employee Benefits				\$624,429.76
400 Purchased Property Services				
410 Cleaning Services				17,079.26
420 Utility Services				471,345.43
430 Repairs and Maintenance Services				79,349.98
Total Purchased Property Services				\$567,774.67
500 Other Purchased Services				
523 General Property and Liability Insurance				78,199.00
530 Communications				11,103.86
580 Travel				1,747.86
599 Other Miscellaneous Purchased Services				100.00
Total Other Purchased Services				\$91,150.72
600 Supplies				
610 General Supplies	130,394.18	110,363.27		240,757.45
Total Supplies	\$130,394.18	\$110,363.27		\$240,757.45
700 Property				
762 Capitalized Equipment - Replacement				25,590.47
Total Property				\$25,590.47
800 Other Objects				
810 Dues and Fees				357.12
Total Other Objects				\$357.12
Total 2620 Operation of Buildings Services	\$130,394.18	\$110,363.27		\$2,441,484.84

General Fund (10)

	<u>Elementary</u>	<u>Secondary</u>	<u>Federal</u>	<u>Total</u>
2630 Care and Upkeep of Grounds Services				
100 Personnel Services – Salaries				
100 Personnel Services – Salaries				46,293.55
Total Personnel Services – Salaries				\$46,293.55
200 Personnel Services – Employee Benefits				
210 Group Insurance – Contracted Provider				25.53
220 Social Security Contributions				3,491.77
230 PSERS Retirement Contributions				15,461.84
250 Unemployment Compensation				15.29
260 Workers' Compensation				372.23
270 Group Insurance – Self-Insurance				6,942.96
Total Personnel Services – Employee Benefits				\$26,309.62
400 Purchased Property Services				
430 Repairs and Maintenance Services				3,000.00
Total Purchased Property Services				\$3,000.00
600 Supplies				
610 General Supplies	5,000.00	8,369.66		13,369.66
Total Supplies	\$5,000.00	\$8,369.66		\$13,369.66
700 Property				
762 Capitalized Equipment - Replacement				2,483.78
Total Property				\$2,483.78
Total 2630 Care and Upkeep of Grounds Services	\$5,000.00	\$8,369.66		\$91,456.61

LEA : 105253903 General McLane SD

Printed 1/31/2020 11:46:22 AM

General Fund (10)

	<u>Elementary</u>	<u>Secondary</u>	<u>Federal</u>	<u>Total</u>
2650 Vehicle Operation and Maintenance Services (Other Than Student Transportation Vehicles)				
400 <u>Purchased Property Services</u>				
430 Repairs and Maintenance Services				5,162.82
Total Purchased Property Services				\$5,162.82
Total 2650 Vehicle Operation and Maintenance Services (Other Than Student Transportation Vehicles)				\$5,162.82

General Fund (10)

	<u>Elementary</u>	<u>Secondary</u>	<u>Federal</u>	<u>Total</u>
2660 Safety and Security Services				
300 <u>Purchased Professional and Technical Services</u>				
350 Security / Safety Services				49,518.41
Total Purchased Professional and Technical Services				\$49,518.41
500 <u>Other Purchased Services</u>				
580 Travel				226.62
Total Other Purchased Services				\$226.62
600 <u>Supplies</u>				
610 General Supplies	8,413.74	8,452.58		16,866.32
Total Supplies	\$8,413.74	\$8,452.58		\$16,866.32
Total 2660 Safety and Security Services	\$8,413.74	\$8,452.58		\$66,611.35

General Fund (10)

2700 Student Transportation Services

Elementary Secondary Federal Total

100	<u>Personnel Services – Salaries</u>				
	100 Personnel Services – Salaries				925,003.54
Total Personnel Services – Salaries					\$925,003.54
200	<u>Personnel Services – Employee Benefits</u>				
	210 Group Insurance – Contracted Provider				781.05
	220 Social Security Contributions				70,784.16
	230 PSERS Retirement Contributions				307,796.60
	250 Unemployment Compensation				710.61
	260 Workers' Compensation				7,530.00
	270 Group Insurance – Self-Insurance				92,699.92
Total Personnel Services – Employee Benefits					\$480,302.34
300	<u>Purchased Professional and Technical Services</u>				
	340 Technical Services				3,402.77
Total Purchased Professional and Technical Services					\$3,402.77
400	<u>Purchased Property Services</u>				
	410 Cleaning Services				4,496.24
	420 Utility Services				14,229.67
	430 Repairs and Maintenance Services				99.70
Total Purchased Property Services					\$18,825.61
500	<u>Other Purchased Services</u>				
	516 Student Transportation Services From the IU				146.16
	522 Automotive Liability Insurance				50,135.00
	530 Communications				(51.62)
	580 Travel				762.13
	599 Other Miscellaneous Purchased Services				6,927.88
Total Other Purchased Services					\$57,919.55
600	<u>Supplies</u>				
	610 General Supplies				100,560.41
	620 Energy				176,503.40
Total Supplies					\$277,063.81
800	<u>Other Objects</u>				
	810 Dues and Fees				196.63
Total Other Objects					\$196.63
Total 2700 Student Transportation Services					\$1,762,714.25

General Fund (10)

2720 Vehicle Operation Services

Elementary Secondary Federal Total

100 Personnel Services – Salaries				
100 Personnel Services – Salaries				836,249.86
Total Personnel Services – Salaries				\$836,249.86
200 Personnel Services – Employee Benefits				
210 Group Insurance – Contracted Provider				709.74
220 Social Security Contributions				64,038.54
230 PSERS Retirement Contributions				278,175.29
250 Unemployment Compensation				693.77
260 Workers' Compensation				6,837.84
270 Group Insurance – Self-Insurance				87,060.97
Total Personnel Services – Employee Benefits				\$437,516.15
300 Purchased Professional and Technical Services				
340 Technical Services				2,892.34
Total Purchased Professional and Technical Services				\$2,892.34
400 Purchased Property Services				
410 Cleaning Services				4,207.44
420 Utility Services				14,229.67
430 Repairs and Maintenance Services				99.70
Total Purchased Property Services				\$18,536.81
500 Other Purchased Services				
516 Student Transportation Services From the IU				146.16
522 Automotive Liability Insurance				43,040.00
530 Communications				(51.62)
580 Travel				762.13
599 Other Miscellaneous Purchased Services				5,901.31
Total Other Purchased Services				\$49,797.98
600 Supplies				
610 General Supplies				86,149.96
620 Energy				150,089.54
Total Supplies				\$236,239.50
800 Other Objects				
810 Dues and Fees				196.63
Total Other Objects				\$196.63
Total 2720 Vehicle Operation Services				\$1,581,429.27

General Fund (10)

	<u>Elementary</u>	<u>Secondary</u>	<u>Federal</u>	<u>Total</u>
2750 Nonpublic Transportation				
100 <u>Personnel Services – Salaries</u>				
100 Personnel Services – Salaries				88,753.68
Total Personnel Services – Salaries				\$88,753.68
200 <u>Personnel Services – Employee Benefits</u>				
210 Group Insurance – Contracted Provider				71.31
220 Social Security Contributions				6,745.62
230 PSERS Retirement Contributions				29,621.31
250 Unemployment Compensation				16.84
260 Workers' Compensation				692.16
270 Group Insurance – Self-Insurance				5,638.95
Total Personnel Services – Employee Benefits				\$42,786.19
300 <u>Purchased Professional and Technical Services</u>				
340 Technical Services				510.43
Total Purchased Professional and Technical Services				\$510.43
400 <u>Purchased Property Services</u>				
410 Cleaning Services				288.80
Total Purchased Property Services				\$288.80
500 <u>Other Purchased Services</u>				
522 Automotive Liability Insurance				7,095.00
599 Other Miscellaneous Purchased Services				1,026.57
Total Other Purchased Services				\$8,121.57
600 <u>Supplies</u>				
610 General Supplies				14,410.45
620 Energy				26,413.86
Total Supplies				\$40,824.31
Total 2750 Nonpublic Transportation				\$181,284.98

LEA : 105253903 General McLane SD

Printed 1/31/2020 11:46:22 AM

General Fund (10)

2800 Support Services – Central

Elementary

Secondary

Federal

Total

100 Personnel Services – Salaries

100 Personnel Services – Salaries

61,816.70

Total Personnel Services – Salaries

\$61,816.70

200 Personnel Services – Employee Benefits

210 Group Insurance – Contracted Provider

87.63

220 Social Security Contributions

4,577.35

230 PSERS Retirement Contributions

20,645.81

250 Unemployment Compensation

11.47

260 Workers' Compensation

501.55

270 Group Insurance – Self-Insurance

13,442.52

Total Personnel Services – Employee Benefits

\$39,266.33

500 Other Purchased Services

580 Travel

2,420.00

Total Other Purchased Services

\$2,420.00

Total 2800 Support Services – Central

\$103,503.03

LEA : 105253903 General McLane SD

Printed 1/31/2020 11:46:22 AM

General Fund (10)

	<u>Elementary</u>	<u>Secondary</u>	<u>Federal</u>	<u>Total</u>
2810 Planning, Research, Development and Evaluation Services				
500 <u>Other Purchased Services</u>				
580 Travel				2,420.00
Total Other Purchased Services				\$2,420.00
Total 2810 Planning, Research, Development and Evaluation Services				\$2,420.00

LEA : 105253903 General McLane SD

Printed 1/31/2020 11:46:22 AM

General Fund (10)

2820 Information Services

Elementary

Secondary

Federal

Total

100 Personnel Services – Salaries

100 Personnel Services – Salaries

61,816.70

Total Personnel Services – Salaries

\$61,816.70

200 Personnel Services – Employee Benefits

210 Group Insurance – Contracted Provider

87.63

220 Social Security Contributions

4,577.35

230 PSERS Retirement Contributions

20,645.81

250 Unemployment Compensation

11.47

260 Workers' Compensation

501.55

270 Group Insurance – Self-Insurance

13,442.52

Total Personnel Services – Employee Benefits

\$39,266.33

Total 2820 Information Services

\$101,083.03

General Fund (10)

2821 Supervision of Information Services

Elementary

Secondary

Federal

Total

100 Personnel Services – Salaries

100 Personnel Services – Salaries

61,816.70

Total Personnel Services – Salaries

\$61,816.70

200 Personnel Services – Employee Benefits

210 Group Insurance – Contracted Provider

87.63

220 Social Security Contributions

4,577.35

230 PSERS Retirement Contributions

20,645.81

250 Unemployment Compensation

11.47

260 Workers' Compensation

501.55

270 Group Insurance – Self-Insurance

13,442.52

Total Personnel Services – Employee Benefits

\$39,266.33

Total 2821 Supervision of Information Services

\$101,083.03

General Fund (10)

2900 Other Support Services

Elementary

Secondary

Federal

Total

500 Other Purchased Services

595 IU Payments By Withholding

51,784.18

Total Other Purchased Services

\$51,784.18

Total 2900 Other Support Services

\$51,784.18

General Fund (10)

2910 Support Services Not Listed Elsewhere In the 2000 Series

Elementary

Secondary

Federal

Total

500 Other Purchased Services

595 IU Payments By Withholding

51,784.18

Total Other Purchased Services

\$51,784.18

Total 2910 Support Services Not Listed Elsewhere In the 2000 Series

\$51,784.18

General Fund (10)

3000 Operation of Non-Instructional Services	<u>Total</u>
100 Personnel Services – Salaries	
100 Personnel Services – Salaries	497,167.11
Total Personnel Services – Salaries	\$497,167.11
200 Personnel Services – Employee Benefits	
210 Group Insurance – Contracted Provider	126.23
220 Social Security Contributions	40,259.85
230 PSERS Retirement Contributions	172,782.96
250 Unemployment Compensation	342.90
260 Workers' Compensation	4,278.13
270 Group Insurance – Self-Insurance	17,923.71
Total Personnel Services – Employee Benefits	\$235,713.78
300 Purchased Professional and Technical Services	
330 Other Professional Services	12,472.50
350 Security / Safety Services	4,368.00
390 Other Purchased Professional and Technical Services	30,202.00
Total Purchased Professional and Technical Services	\$47,042.50
400 Purchased Property Services	
430 Repairs and Maintenance Services	8,742.95
440 Rentals	3,540.00
Total Purchased Property Services	\$12,282.95
500 Other Purchased Services	
580 Travel	63,267.13
599 Other Miscellaneous Purchased Services	30,885.20
Total Other Purchased Services	\$94,152.33
600 Supplies	
610 General Supplies	15,197.16
Total Supplies	\$15,197.16
700 Property	
762 Capitalized Equipment - Replacement	43,081.17
Total Property	\$43,081.17
800 Other Objects	
810 Dues and Fees	994.00
890 Miscellaneous Expenditures	3,456.00
Total Other Objects	\$4,450.00
Total 3000 Operation of Non-Instructional Services	\$949,087.00

General Fund (10)

	<u>Elementary</u>	<u>Secondary</u>	<u>Federal</u>	<u>Total</u>
3200 Student Activities				
100 Personnel Services – Salaries				
100 Personnel Services – Salaries				497,167.11
Total Personnel Services – Salaries				\$497,167.11
200 Personnel Services – Employee Benefits				
210 Group Insurance – Contracted Provider				126.23
220 Social Security Contributions				40,259.85
230 PSERS Retirement Contributions				172,782.96
250 Unemployment Compensation				342.90
260 Workers' Compensation				4,278.13
270 Group Insurance – Self-Insurance				17,923.71
Total Personnel Services – Employee Benefits				\$235,713.78
300 Purchased Professional and Technical Services				
330 Other Professional Services				12,472.50
350 Security / Safety Services				4,368.00
390 Other Purchased Professional and Technical Services				30,202.00
Total Purchased Professional and Technical Services				\$47,042.50
400 Purchased Property Services				
430 Repairs and Maintenance Services				8,742.95
440 Rentals				3,540.00
Total Purchased Property Services				\$12,282.95
500 Other Purchased Services				
580 Travel				63,267.13
599 Other Miscellaneous Purchased Services				30,885.20
Total Other Purchased Services				\$94,152.33
600 Supplies				
610 General Supplies				15,197.16
Total Supplies				\$15,197.16
700 Property				
762 Capitalized Equipment - Replacement				43,081.17
Total Property				\$43,081.17
800 Other Objects				
810 Dues and Fees				994.00
Total Other Objects				\$994.00
Total 3200 Student Activities				\$945,631.00

LEA : 105253903 General McLane SD

Printed 1/31/2020 11:46:27 AM

General Fund (10)

3400 Scholarships and Awards

Elementary

Secondary

Federal

Total

800 Other Objects

890 Miscellaneous Expenditures

3,456.00

Total Other Objects

\$3,456.00

Total 3400 Scholarships and Awards

\$3,456.00

General Fund (10)

4000 Facilities Acquisition, Construction and Improvement Services

Total

700 Property

762 Capitalized Equipment - Replacement

564,099.00

Total Property

\$564,099.00

Total 4000 Facilities Acquisition, Construction and Improvement Services

\$564,099.00

LEA : 105253903 General McLane SD

Printed 1/31/2020 11:46:32 AM

General Fund (10)

4600 Existing Building Improvement Services

Elementary

Secondary

Federal

Total

700 Property

762 Capitalized Equipment - Replacement

564,099.00

Total Property

\$564,099.00

Total 4600 Existing Building Improvement Services

\$564,099.00

General Fund (10)

5000 Other Expenditures and Financing Uses

Total

900 Other Uses of Funds

939 Other Fund Transfers

2,050,197.24

Total Other Uses of Funds

\$2,050,197.24

Total 5000 Other Expenditures and Financing Uses

\$2,050,197.24

LEA : 105253903 General McLane SD

Printed 1/31/2020 11:46:37 AM

General Fund (10)

5200 Interfund Transfers – Out

Elementary

Secondary

Federal

Total

900 Other Uses of Funds

939 Other Fund Transfers

2,050,197.24

Total Other Uses of Funds

\$2,050,197.24

Total 5200 Interfund Transfers – Out

\$2,050,197.24

LEA : 105253903 General McLane SD

Printed 1/31/2020 11:46:37 AM

General Fund (10)

5230 Capital Projects Fund Transfers

Elementary

Secondary

Federal

Total

900 Other Uses of Funds

939 Other Fund Transfers

2,005,000.00

Total Other Uses of Funds

\$2,005,000.00

Total 5230 Capital Projects Fund Transfers

\$2,005,000.00

LEA : 105253903 General McLane SD

Printed 1/31/2020 11:46:37 AM

General Fund (10)

5250 Enterprise Fund Transfers

Elementary

Secondary

Federal

Total

900 Other Uses of Funds

939 Other Fund Transfers

43,141.24

Total Other Uses of Funds

\$43,141.24

Total 5250 Enterprise Fund Transfers

\$43,141.24

LEA : 105253903 General McLane SD

Printed 1/31/2020 11:46:37 AM

General Fund (10)

	<u>Elementary</u>	<u>Secondary</u>	<u>Federal</u>	<u>Total</u>
5270 Trust and Agency Fund Transfers				
900 <u>Other Uses of Funds</u>				
939 Other Fund Transfers				2,056.00
Total Other Uses of Funds				\$2,056.00
Total 5270 Trust and Agency Fund Transfers				\$2,056.00

LEA : 105253903 General McLane SD

Printed 1/31/2020 11:46:25 AM

Other Capital Projects Fund (39)

2000 Support Services

	<u>Total</u>
600 <u>Supplies</u>	
610 General Supplies	22,150.00
Total Supplies	\$22,150.00
Total 2000 Support Services	\$22,150.00

LEA : 105253903 General McLane SD

Printed 1/31/2020 11:46:25 AM

Other Capital Projects Fund (39)

2200 Support Services – Instructional Staff

	<u>Elementary</u>	<u>Secondary</u>	<u>Federal</u>	<u>Total</u>
600 <u>Supplies</u>				
610 General Supplies	11,075.00	11,075.00		22,150.00
Total Supplies	\$11,075.00	\$11,075.00		\$22,150.00
Total 2200 Support Services – Instructional Staff	\$11,075.00	\$11,075.00		\$22,150.00

LEA : 105253903 General McLane SD

Printed 1/31/2020 11:46:25 AM

Other Capital Projects Fund (39)

2220 Technology Support Services

600 Supplies

610 General Supplies

Total Supplies

Total 2220 Technology Support Services

	<u>Elementary</u>	<u>Secondary</u>	<u>Federal</u>	<u>Total</u>
610 General Supplies	11,075.00	11,075.00		22,150.00
Total Supplies	\$11,075.00	\$11,075.00		\$22,150.00
Total 2220 Technology Support Services	\$11,075.00	\$11,075.00		\$22,150.00

LEA : 105253903 General McLane SD

Printed 1/31/2020 11:46:34 AM

Other Capital Projects Fund (39)

4000 Facilities Acquisition, Construction and Improvement Services

Total

700 Property

762 Capitalized Equipment - Replacement

1,552,548.00

Total Property

\$1,552,548.00

Total 4000 Facilities Acquisition, Construction and Improvement Services

\$1,552,548.00

LEA : 105253903 General McLane SD

Printed 1/31/2020 11:46:34 AM

Other Capital Projects Fund (39)

4600 Existing Building Improvement Services

Elementary

Secondary

Federal

Total

700 Property

762 Capitalized Equipment - Replacement

1,552,548.00

Total Property

\$1,552,548.00

Total 4600 Existing Building Improvement Services

\$1,552,548.00

	<u>General Fund(10)</u>	<u>Public Purpose Trust(27)</u>	<u>Other Compt Approved (28)</u>	<u>Athletic / Activity(29)</u>	<u>Capital Reserve (690. 1850)(31)</u>
1000 Instruction					
1100 Regular Programs - Elementary / Secondary	13,710,871.31				
1200 Special Programs - Elementary / Secondary	3,779,654.25				
1300 Vocational Education	1,381,045.31				
1400 Other Instructional Programs - Elementary / Secondary	606,912.33				
Total Instruction	\$19,478,483.20				
2000 Support Services					
2100 Support Services - Students	1,166,461.38				
2200 Support Services - Instructional Staff	1,430,270.15				
2300 Support Services - Administration	2,017,806.43				
2400 Support Services - Pupil Health	462,824.01				
2500 Support Services - Business	378,354.65				
2600 Operation and Maintenance of Plant Services	2,734,252.70				
2700 Student Transportation Services	1,762,714.25				
2800 Support Services - Central	103,503.03				
2900 Other Support Services	51,784.18				
Total Support Services	\$10,107,970.78				
3000 Operation of Non-Instructional Services					
3200 Student Activities	945,631.00				
3400 Scholarships and Awards	3,456.00				
Total Operation of Non-Instructional Services	\$949,087.00				
4000 Facilities Acquisition, Construction and Improvement Services					
4600 Existing Building Improvement Services	564,099.00				
Total Facilities Acquisition, Construction and Improvement	\$564,099.00				
5000 Other Expenditures and Financing Uses					
5200 Interfund Transfers - Out	2,050,197.24				
Total Other Expenditures and Financing Uses	\$2,050,197.24				
TOTAL ACTUAL EXPENDITURES & OTHER FINANCING USES	\$33,149,837.22				

	<u>Capital Reserve (1431)(32)</u>	<u>Other Capital Projects Fund(39)</u>	<u>Debt Service(40)</u>	<u>Permanent(90)</u>	<u>Total</u>
1000 Instruction					
1100 Regular Programs - Elementary / Secondary					13,710,871.31
1200 Special Programs - Elementary / Secondary					3,779,654.25
1300 Vocational Education					1,381,045.31
1400 Other Instructional Programs - Elementary / Secondary					606,912.33
Total Instruction					\$19,478,483.20
2000 Support Services					
2100 Support Services - Students					1,166,461.38
2200 Support Services - Instructional Staff		22,150.00			1,452,420.15
2300 Support Services - Administration					2,017,806.43
2400 Support Services - Pupil Health					462,824.01
2500 Support Services - Business					378,354.65
2600 Operation and Maintenance of Plant Services					2,734,252.70
2700 Student Transportation Services					1,762,714.25
2800 Support Services - Central					103,503.03
2900 Other Support Services					51,784.18
Total Support Services		\$22,150.00			\$10,130,120.78
3000 Operation of Non-Instructional Services					
3200 Student Activities					945,631.00
3400 Scholarships and Awards					3,456.00
Total Operation of Non-Instructional Services					\$949,087.00
4000 Facilities Acquisition, Construction and Improvement Services					
4600 Existing Building Improvement Services		1,552,548.00			2,116,647.00
Total Facilities Acquisition, Construction and Improvement		\$1,552,548.00			\$2,116,647.00
5000 Other Expenditures and Financing Uses					
5200 Interfund Transfers - Out					2,050,197.24
Total Other Expenditures and Financing Uses					\$2,050,197.24
TOTAL ACTUAL EXPENDITURES & OTHER FINANCING USES		\$1,574,698.00			\$34,724,535.22

LEA : 105253903 General McLane SD

Printed 1/31/2020 11:46:57 AM

PSERS Salary Data (Salary Data should relate to the General Fund only)

Amount Description	Amount
Total Salary Base for salaries subject to PSERS withholding	15,929,930.00
Total Federally Funded salaries subject to PSERS withholding	223,377.00
	<hr/>

Title I Expenditure Data

Amount Description	Amount
Expenditures Funded with Current Title I Funds	320,672.00
Expenditures Funded with Carry over Title I Funds	
Total Title I Expenditure Data	<hr/> \$320,672.00 <hr/>

Benefits for Staff Relative to Collective Bargaining Agreements

	OBJECT	COVERED	NOT COVERED	TOTAL
10 General Fund				
	211 Medical Insurance			
	212 Dental Insurance			
	215 Eye Care Insurance			
	216 Prescription Insurance			
	271 Self-Insurance Medical Benefits	2,057,371.00	723,944.00	2,781,315.00
	272 Self-Insurance Dental Benefits	92,467.00	27,307.00	119,774.00
	275 Self-Insurance Eye Care Benefits	16,643.00	4,796.00	21,439.00
	276 Self-Insurance Prescription Benefits			
	FUND TOTAL	\$2,166,481.00	\$756,047.00	\$2,922,528.00
50 Enterprise Fund				
	211 Medical Insurance			
	212 Dental Insurance			
	215 Eye Care Insurance			
	216 Prescription Insurance			
	271 Self-Insurance Medical Benefits		9,992.00	9,992.00
	272 Self-Insurance Dental Benefits			
	275 Self-Insurance Eye Care Benefits			
	276 Self-Insurance Prescription Benefits			
	FUND TOTAL		\$9,992.00	\$9,992.00
60 Internal Service Fund	No Self Insurance data to report			
	211 Medical Insurance			
	212 Dental Insurance			
	215 Eye Care Insurance			
	216 Prescription Insurance			
	271 Self-Insurance Medical Benefits			
	272 Self-Insurance Dental Benefits			
	275 Self-Insurance Eye Care Benefits			
	276 Self-Insurance Prescription Benefits			
	FUND TOTAL			
Total of All Funds		\$2,166,481.00	\$766,039.00	\$2,932,520.00

LEA : 105253903 General McLane SD

Printed 1/31/2020 11:47:01 AM

Function	Special Education (Prior Year)	Nonspecial Education (Prior Year)	Total (Prior Year)	Special Education (Current Year)	Nonspecial Education (Current Year)	Total (Current Year)
2120 Guidance Services	104,744.44	520,763.31	625,507.75	109,053.31	557,558.18	666,611.49
2140 Psychological Services	110,073.28		110,073.28	247,615.00		247,615.00
2150 Speech Pathology and Audiology Services						
2160 Social Work Services	171,909.18		171,909.18	179,630.00		179,630.00
2260 Instruction and Curriculum Development Services	171,238.13		171,238.13	189,104.59		189,104.59
2350 Legal and Accounting Services	56,988.90	46,627.28	103,616.18	25,758.70	21,075.30	46,834.00
2420 Medical Services						
2440 Nursing Services	134,767.01	314,456.37	449,223.38	138,746.83	324,077.17	462,824.00
2700 Student Transportation Services	283,334.03	1,408,666.34	1,692,000.37	288,368.34	1,474,345.66	1,762,714.00
Total	\$1,033,054.97	\$2,290,513.30	\$3,323,568.27	\$1,178,276.77	\$2,377,056.31	\$3,555,333.08

(PRINCIPAL AMOUNTS ONLY)

GOVERNMENTAL FUNDS/ ACTIVITIES

	Short-Term Borrowing	General Obligation Bonds/Notes	Authority Building Obligations	Other Long-Term Debt	Other Post-Employment Benefits (OPEB)	Compensated Absences	Net Pension Liability	Total
1. Debt at Beginning of Fiscal Year					1,370,635.00	1,635,922.00	55,273,960.00	58,280,517.00
2. Additional Debt Incurred During Year					2,177,057.00	79,277.00		2,256,334.00
3. Retirements and Repayments						129,685.00	1,360,240.00	1,489,925.00
4. Debt at End of Fiscal Year					3,547,692.00	1,585,514.00	53,913,720.00	59,046,926.00
5. Accreted Interest at End Of Fiscal Year								
6. Total Debt and Accreted Interest					3,547,692.00	1,585,514.00	53,913,720.00	59,046,926.00
7. Current Portion P&I - Due within 1 year								
8. Interest Paid during current fiscal year								

(PRINCIPAL AMOUNTS ONLY)

PROPRIETARY FUNDS

	Short-Term Borrowing	General Obligation Bonds/Notes	Authority Building Obligations	Other Long-Term Debt	Other Post-Employment Benefits (OPEB)	Compensated Absences	Net Pension Liability	Total
1. Debt at Beginning of Fiscal Year							1,128,040.00	1,128,040.00
2. Additional Debt Incurred During Year								
3. Retirements and Repayments							27,760.00	27,760.00
4. Debt at End of Fiscal Year							1,100,280.00	1,100,280.00
5. Accreted Interest at End Of Fiscal Year								
6. Total Debt and Accreted Interest							1,100,280.00	1,100,280.00
7. Current Portion P&I - Due within 1 year								
8. Interest Paid during current fiscal year								

Total Principal and Interest Payments Made by Your School - All Funds

Function	Fund		Principal (910)	Principal (920)	Interest (830)	Total (Principal +Interest)	Misc Other Uses (990)
5110	10	General Fund					
5110	20	Special Revenue Funds					
5110	30	Capital Projects Funds					
5110	40	Debt Service Fund					
5110	90	Permanent Fund					
5120	10	General Fund					
5120	20	Special Revenue Funds					
5120	30	Capital Projects Funds					
5120	40	Debt Service Fund					

Total Debt Payments - Governmental Funds

Function	Fund		Principal (910)	Principal (920)	Interest (830)	Total (Principal +Interest)
5110	50	Enterprise Fund				
5110	60	Internal Service Fund				
5120	50	Enterprise Fund				
5120	60	Internal Service Fund				

Total Debt Payments - Proprietary Funds

Debt Details
Governmental Funds/ Activities

Debt Category	Debt Issue Date (MM/YYYY)	Principal Amounts Only			Debt at End of Fiscal Year	Current Portion Due Within One Year (Principal and Interest)	Interest Paid During Fiscal Year
		Debt at Beginning of Fiscal Year	Additions	Reductions / Repayments			
Compensated Absences		1,635,922.00	79,277.00	129,685.00	1,585,514.00		
Other Post-Employment Benefits (OPEB)		1,370,635.00	2,177,057.00		3,547,692.00		
Net Pension Liability		55,273,960.00		1,360,240.00	53,913,720.00		
Totals for Debt Entered:		\$58,280,517.00	\$2,256,334.00	\$1,489,925.00	\$59,046,926.00		

Bond Details
Proprietary Funds

Debt Category	Debt Issue Date (MM/YYYY)	Principal Amounts Only			Debt at End of Fiscal Year	Current Portion Due Within One Year (Principal and Interest)	Interest Paid During Fiscal Year
		Debt at Beginning of Fiscal Year	Additions	Reductions / Repayments			
Net Pension Liability		1,128,040.00		27,760.00	1,100,280.00		
Totals for Debt Entered:		\$1,128,040.00		\$27,760.00	\$1,100,280.00		

General Fund (10)

Section 1: Tuition/Purchased Services as Reported within Expenditure Detail

	Amount
Tuition Reported in General Fund Expenditures 1000-560	1,289,138.16
Purchased Services in General Fund Expenditures 1000-594 and 1000-597	

Section 1 Total	\$1,289,138.16
------------------------	-----------------------

Section 2: Tuition Paid to Institution Types During Fiscal Year

	Tuition Paid For Nonspecial Education	Tuition Paid For Special Education	Total
1 1306 Institutions			
2 Institutionalized Children's Programs		61,427.00	61,427.00
3 Juveniles Incarcerated in Adult Facilities			
4 Residential Treatment Facilities		18,631.95	18,631.95
5 Other Local Education Agencies	3,953.99	82,921.27	86,875.26
6 Brick and Mortar Charter Schools	61,765.78		61,765.78
7 Cyber Charter Schools	459,813.16	57,955.89	517,769.05
8 Career and Technology Centers	413,348.10	17,220.00	430,568.10
9 Approved Private Schools		81,159.56	81,159.56
10 PA Chartered Schools for the Deaf and Blind			
11 Private Residential Rehabilitative Institutions		2,754.82	2,754.82
12 Juvenile Detention Centers			
13 Special Program Jointures			
14 Other Tuition Not Included Elsewhere In This Section	6,250.00	21,936.64	28,186.64
Section 2 Total	\$945,131.03	\$344,007.13	\$1,289,138.16

1 .	<u>Student Transportation Services for Educational Field Trips</u>	27,538.35
2 .	<u>Student Transportation Services for Student Activities</u>	63,267.13
3 .	<u>Rental of Vehicles for Student Transportation Services</u>	
4 .	<u>Capital Reserve Funds</u>	

Include only district-owned transportation expenditures paid from State or local money.
 DO NOT include federal expenditures or payments to contract service providers.
 Contracted transportation services should not be recorded on this schedule.

LEA : 105253903 General McLane SD

Printed 1/31/2020 11:47:12 AM

Food Service / Cafeteria Operations Fund (51)

3000 Operation of Non-Instructional Services

Total

100 Personnel Services – Salaries

100 Personnel Services – Salaries 335,074.35

Total Personnel Services – Salaries \$335,074.35

200 Personnel Services – Employee Benefits

210 Group Insurance – Contracted Provider 503.69

220 Social Security Contributions 25,258.40

230 PSERS Retirement Contributions 104,035.46

250 Unemployment Compensation 2,135.90

260 Workers' Compensation 3,685.87

270 Group Insurance – Self-Insurance 9,992.01

Total Personnel Services – Employee Benefits \$145,611.33

300 Purchased Professional and Technical Services

390 Other Purchased Professional and Technical Services 5,255.00

Total Purchased Professional and Technical Services \$5,255.00

400 Purchased Property Services

430 Repairs and Maintenance Services 5,192.55

Total Purchased Property Services \$5,192.55

500 Other Purchased Services

550 Printing and Binding 393.25

580 Travel 614.86

Total Other Purchased Services \$1,008.11

600 Supplies

610 General Supplies 35,256.91

630 Food 370,816.56

Total Supplies \$406,073.47

700 Property

740 Depreciation 10,528.00

Total Property \$10,528.00

900 Other Uses of Funds

900 Other Uses of Funds 2,820.99

Total Other Uses of Funds \$2,820.99

Total 3000 Operation of Non-Instructional Services \$911,563.80

Food Service / Cafeteria Operations Fund (51)

	<u>Elementary</u>	<u>Secondary</u>	<u>Federal</u>	<u>Total</u>
3100 Food Services				
100 Personnel Services – Salaries				
100 Personnel Services – Salaries				335,074.35
Total Personnel Services – Salaries				\$335,074.35
200 Personnel Services – Employee Benefits				
210 Group Insurance – Contracted Provider				503.69
220 Social Security Contributions				25,258.40
230 PSERS Retirement Contributions				104,035.46
250 Unemployment Compensation				2,135.90
260 Workers' Compensation				3,685.87
270 Group Insurance – Self-Insurance				9,992.01
Total Personnel Services – Employee Benefits				\$145,611.33
300 Purchased Professional and Technical Services				
390 Other Purchased Professional and Technical Services				5,255.00
Total Purchased Professional and Technical Services				\$5,255.00
400 Purchased Property Services				
430 Repairs and Maintenance Services				5,192.55
Total Purchased Property Services				\$5,192.55
500 Other Purchased Services				
550 Printing and Binding				393.25
580 Travel				614.86
Total Other Purchased Services				\$1,008.11
600 Supplies				
610 General Supplies				35,256.91
630 Food				370,816.56
Total Supplies				\$406,073.47
700 Property				
740 Depreciation				10,528.00
Total Property				\$10,528.00
900 Other Uses of Funds				
900 Other Uses of Funds				2,820.99
Total Other Uses of Funds				\$2,820.99
Total 3100 Food Services				\$911,563.80

	<u>Food Service(51)</u>	<u>Child Care Operations(52)</u>	<u>Other Enterprise(58)</u>	<u>Internal Service(60)</u>	<u>Total</u>
3000 <u>Operation of Non-Instructional Services</u>					
3100 Food Services	911,563.80				911,563.80
Total Operation of Non-Instructional Services	\$911,563.80				\$911,563.80
TOTAL ACTUAL EXPENDITURES & OTHER FINANCING USES	\$911,563.80				\$911,563.80

LEA : 105253903 General McLane SD

Printed 1/31/2020 11:47:22 AM

Fund	School	School Number	Local Personnel	Local Nonpersonnel	State Personnel	State Nonpersonnel	Federal Personnel	Federal Nonpersonnel	Total	Explanation
10										
	Edinboro El Sch	2038	4,609,883.00	623,137.00	164,720.00		162,197.00	30,114.00	5,590,051.00	
	General McLane HS	2040	8,576,589.00	1,651,226.00			4,565.00	1,665.00	10,234,045.00	
	James W Parker MS	5225	7,587,971.00	817,201.00			6,545.00	8,430.00	8,420,147.00	
	McKean El Sch	2039	4,277,119.00	606,429.00	164,720.00		161,924.00	32,200.00	5,242,392.00	
Total			25,051,562.00	3,697,993.00	329,440.00		335,231.00	72,409.00	29,486,635.00	