

**Annual Financial Report
Accuracy Certification Statement**

For Fiscal Year Ending
6/30/2018

Pennsylvania Department of Education
&
Office of Comptroller Operations

PDE-2056: Intermediate Unit
PDE-2057: School District, AVTS/CTC, Charter School,
and Special Program Jointure

CERTIFICATION: By signing this page I agree that the electronic data submitted is a complete and accurate statement of the financial operations and status of the local education agency for the fiscal year. It has been prepared in accordance with generally accepted accounting principles and established Commonwealth of PA reporting guidelines.



Chief School Administrator Signature

10.31.18

Date



Board Secretary Signature

10.31.18

Date

William Fendya

Contact Person

(814)273-1033 Ext :

Contact Person Telephone Number

williamfendya@generalmclane.org

Contact Person E-mail Address

(814)273-1030

Contact Person Fax Number

Audit Certification
Annual Financial Report:
For Fiscal Year Ending **6/30/2018**
(Pursuant to PA School Code Section 218(b))

LEA Name : General McLane SD
AUN Number : 105253903
County : Erie

Audit Certification Due: 12/31/2018

This certification is applicable to the Annual Financial Report data submitted through the Consolidated Financial Reporting System on: 10/31/2018
Date

Auditing Firm: Buseck, Barger, Bleil & Company, Inc.

Auditor Contact Name: Valerie Hartley

Auditor Phone: 814-454-6341

Auditor E-mail: vhartley@BBBCPAS.com

CERTIFICATION: By signing this page I agree that the financial statements of the school have been properly audited as noted above pursuant to Article XXIV, and in the auditor's professional opinion, the Annual Financial Report (PDE-2057) submitted on the date referenced is materially consistent with the audited financial statements.

Chief School Administrator

Board Secretary



Signature

10.31.18

Date



Signature

10.31.18

Date

William Fendya

Contact Person

williamfendya@generalmcclane.org

Contact Person E-mail Address

(814)273-1033

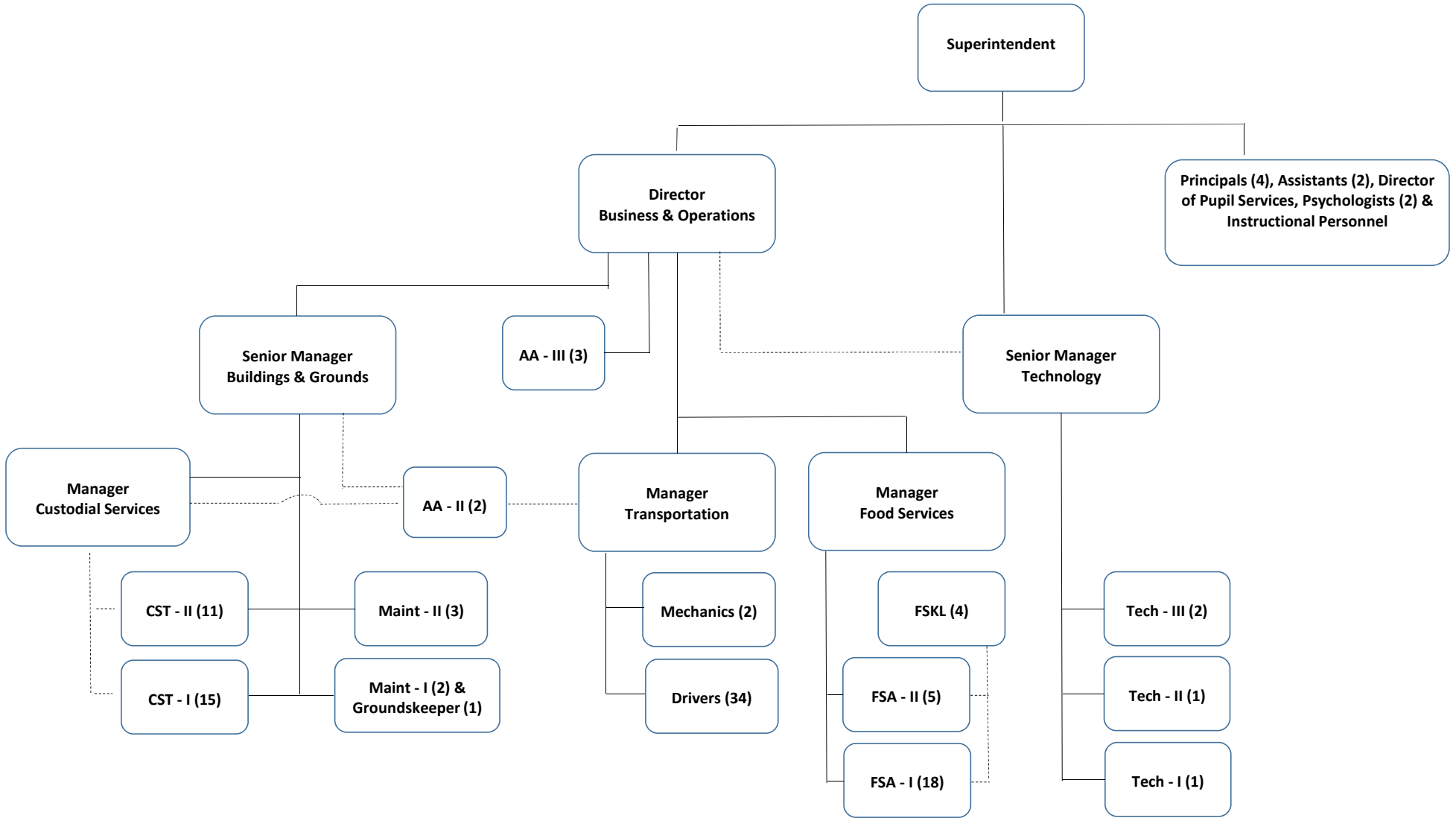
Ext :

Contact Person Telephone Number

(814)273-1030

Contact Person Fax Number

**General McLane School District
Organization Chart**



<u>Val Number</u>	<u>Description</u>	<u>Justification</u>
20160	NAF: Data has been entered for Discrete Component Units within Column 98. Identify the Component Unit.	General McLane Foundation
30501	Revenue Detail: AFR amount must equal or exceed PDE FAI System amount. 7311, AFR Rev Detail: \$759,240.61 7311, PDE FAI System: \$799,463.24	The amount shown here for the PDE FAI System does not agree with the Audit Confirmation Report and the District is not able to identify the difference.
30730	Revenue Detail - Fund 10: Data has been entered for Revenue code 9910 - Other Financing Sources. Please provide a description of this entry. REV Detail 9910, Fund 10: \$124,914.33	Insurance recovery = \$59,330 Refund of prior year expenditures \$65,584
41162	Expenditure Detail, Salaries (Object 100) and Benefits (Object 200 series): Amounts must be entered for both Salaries and Benefits. Please verify following fund and function codes: Fund 10 Function 2330;	Payments to tax collectors are recorded as contracted services rather than wages. Social Security contributions are recorded on the payments.
50410	SESS - 2140 Psychological Services: SESS Schedule amounts for Special Education vary from prior year by 40% or more. Correct the data or enter a justification. SESS Schedule 2140: \$110,073.28 Prior Year SESS Schedule 2140: \$210,171.49	A school psychologist was on unpaid leave during the 2017-18 fiscal year.
50440	SESS - 2260 Instruction and Curriculum Development Services: SESS Schedule amounts for Special Education vary from prior year by 40% or more. Correct the data or enter a justification. SESS Schedule 2260: \$171,238.13 Prior Year SESS Schedule 2260: \$35,282.37	A full-time Special Education Director was hired for the 2017-18 fiscal year.
50450	SESS - 2350 Legal and Accounting Services: SESS Schedule amounts for Special Education vary from prior year by 40% or more. Correct the data or enter a justification. SESS Schedule 2350: \$56,988.90 Prior Year SESS Schedule 2350: \$39,360.59	Legal services for due process hearings and other special education issues were required in 2017-18
50460	SESS - 2420 Medical Services: SESS Schedule amounts for Special Education vary from prior year by 40% or more. Correct the data or enter a justification. SESS Schedule 2420: \$0.00 Prior Year SESS Schedule 2420: \$76.35	Immaterial

Amounts Expressed in Whole Dollars	<u>General Fund</u> <u>(10)</u>	<u>Public Purpose Trust</u> <u>(27)</u>	<u>Other Compt Approved</u> <u>(28)</u>	<u>Athletic / Activity</u> <u>(29)</u>	<u>Capital Reserve (690.</u> <u>1850)</u> <u>(31)</u>
Assets And Deferred Outflows Of Resources					
Assets					
0100 Cash and Cash Equivalents	14,806,734				
0110 Investments	2,490,223				
0120 Taxes Receivable	581,523				
0130 Due From Other Funds	52,391				
0141 Due From Other Governments					
0142 State Revenue Receivable	1,304,855				
0143 Federal Revenue Receivable	46,892				
0145 Other Intergovernmental Revenue Receivable					
0146 Due from Primary Government					
0147 Due from Component Unit					
0150 Other Receivables	214,111				
0170 Inventories					
0180 Prepaid Expenses (Expenditures)	133,525				
0190 Other Current Assets					
Total Assets	\$19,630,254				
0910 Deferred Outflows of Resources					
Total Assets And Deferred Outflows Of Resources	\$19,630,254				

Amounts Expressed in Whole Dollars

	<u>Capital Reserve (1431)</u> <u>(32)</u>	<u>Other Capital Projects</u> <u>Fund</u> <u>(39)</u>	<u>Debt Service</u> <u>(40)</u>	<u>Permanent</u> <u>(90)</u>	<u>Total Governmental</u> <u>Funds</u>
Assets And Deferred Outflows Of Resources					
Assets					
0100 Cash and Cash Equivalents		3,973,628			18,780,362
0110 Investments					2,490,223
0120 Taxes Receivable					581,523
0130 Due From Other Funds					52,391
0141 Due From Other Governments					
0142 State Revenue Receivable					1,304,855
0143 Federal Revenue Receivable					46,892
0145 Other Intergovernmental Revenue Receivable		662,682			662,682
0146 Due from Primary Government					
0147 Due from Component Unit					
0150 Other Receivables					214,111
0170 Inventories					
0180 Prepaid Expenses (Expenditures)					133,525
0190 Other Current Assets					
Total Assets		\$4,636,310			\$24,266,564
0910 Deferred Outflows of Resources					
Total Assets And Deferred Outflows Of Resources		\$4,636,310			\$24,266,564

Amounts Expressed in Whole Dollars

<u>General Fund</u>	<u>Public Purpose Trust</u>	<u>Other Compt Approved</u>	<u>Athletic / Activity</u>	<u>Capital Reserve (690.</u>
<u>(10)</u>	<u>(27)</u>	<u>(28)</u>	<u>(29)</u>	<u>1850)</u>
				<u>(31)</u>

Liabilities And Deferred Inflows Of Resources And Fund Balances

Liabilities

0400 Due to Other Funds	
0411 Due to Other Governments	
0412 Due to Primary Government	
0413 Due to Component Unit	
0420 Accounts Payable	1,036,420
0430 Contracts Payable	
0440 Current Portion of Long-Term Debt	
0450 Short-Term Payables	
0461 Accrued Salaries and Benefits	2,623,880
0462 Payroll Deductions and Withholding	1,262,500
0480 Unearned Revenues	360,417
0490 Other Current Liabilities	

Total Liabilities **\$5,283,217**

0950 Deferred Inflows of Resources

Fund Balances

0810 Nonspendable Fund Balance	133,525
0820 Restricted Fund Balance	
0830 Committed Fund Balance	9,049,931
0840 Assigned Fund Balance	
0850 Unassigned Fund Balance	5,163,581

Total Fund Balances **\$14,347,037**

Total Liabilities, Deferred Inflows Of Resources And Fund Balances **\$19,630,254**

Amounts Expressed in Whole Dollars	<u>Capital Reserve (1431)</u> <u>(32)</u>	<u>Other Capital Projects</u> <u>Fund</u> <u>(39)</u>	<u>Debt Service</u> <u>(40)</u>	<u>Permanent</u> <u>(90)</u>	<u>Total Governmental</u> <u>Funds</u>
Liabilities And Deferred Inflows Of Resources And Fund Balances					
Liabilities					
0400 Due to Other Funds		6,860			6,860
0411 Due to Other Governments					
0412 Due to Primary Government					
0413 Due to Component Unit					
0420 Accounts Payable		994,672			2,031,092
0430 Contracts Payable					
0440 Current Portion of Long-Term Debt					
0450 Short-Term Payables					
0461 Accrued Salaries and Benefits					2,623,880
0462 Payroll Deductions and Withholding					1,262,500
0480 Unearned Revenues					360,417
0490 Other Current Liabilities					
Total Liabilities		\$1,001,532			\$6,284,749
0950 Deferred Inflows of Resources					
Fund Balances					
0810 Nonspendable Fund Balance					133,525
0820 Restricted Fund Balance		3,634,778			3,634,778
0830 Committed Fund Balance					9,049,931
0840 Assigned Fund Balance					
0850 Unassigned Fund Balance					5,163,581
Total Fund Balances		\$3,634,778			\$17,981,815
Total Liabilities, Deferred Inflows Of Resources And Fund Balances		\$4,636,310			\$24,266,564

Amounts Expressed in Whole Dollars	<u>General Fund</u> <u>(10)</u>	<u>Public Purpose Trust</u> <u>(27)</u>	<u>Other Compt Approved</u> <u>(28)</u>	<u>Athletic / Activity</u> <u>(29)</u>	<u>Capital Reserve (690.</u> <u>1850)</u> <u>(31)</u>
Revenues					
6000 Revenue from Local Sources	14,682,794				
7000 Revenue from State Sources	17,214,694				
8000 Revenue from Federal Sources	497,550				
Total Revenues	\$32,395,038				
Expenditures					
1000 Instruction	19,342,434				
2000 Support Services	9,912,920				
3000 Operation of Non-Instructional Services	868,794				
4000 Facilities Acquisition, Construction and Improvement Services	486,468				
5110 Debt Service					
5130 Refund of Prior Year Revenues / Receipts	2,929				
Total Expenditures	\$30,613,545				
Excess (Deficiency) Of Revenues Over Expenditures	\$1,781,493				
Other Financing Sources (Uses)					
9110 Face Value of Bonds Issued					
9120 Proceeds from Refunding of Bonds					
9130 Bond Premiums					
9200 Proceeds from Extended-Term Financing					
9300 Interfund Transfers - IN					
9400 Sale of or Compensation for Loss of Fixed Assets					
9710 Transfers from Component Units					
9720 Transfers from Primary Governments					
9910 Other Financing Sources Not Listed in the 9000 Series	124,914				
9990 Insurance Recoveries					
5120 Debt Service – Refunded Bonds					
5150 Bond Discounts					
5200 Interfund Transfers – Out	2,077,351				
5300 Transfers Out to Component Units/Primary Governments					
Total Other Financing Sources (Uses)	(\$1,952,437)				

Amounts Expressed in Whole Dollars	<u>Capital Reserve (1431)</u> <u>(32)</u>	<u>Other Capital Projects</u> <u>Fund</u> <u>(39)</u>	<u>Debt Service</u> <u>(40)</u>	<u>Permanent</u> <u>(90)</u>	<u>Total Governmental</u> <u>Funds</u>
Revenues					
6000 Revenue from Local Sources		50,336			14,733,130
7000 Revenue from State Sources					17,214,694
8000 Revenue from Federal Sources					497,550
Total Revenues		\$50,336			\$32,445,374
Expenditures					
1000 Instruction					19,342,434
2000 Support Services		250,674			10,163,594
3000 Operation of Non-Instructional Services					868,794
4000 Facilities Acquisition, Construction and Improvement Services		3,709,724			4,196,192
5110 Debt Service					
5130 Refund of Prior Year Revenues / Receipts					2,929
Total Expenditures		\$3,960,398			\$34,573,943
Excess (Deficiency) Of Revenues Over Expenditures		(\$3,910,062)			(\$2,128,569)
Other Financing Sources (Uses)					
9110 Face Value of Bonds Issued					
9120 Proceeds from Refunding of Bonds					
9130 Bond Premiums					
9200 Proceeds from Extended-Term Financing					
9300 Interfund Transfers - IN		2,005,000			2,005,000
9400 Sale of or Compensation for Loss of Fixed Assets					
9710 Transfers from Component Units					
9720 Transfers from Primary Governments					
9910 Other Financing Sources Not Listed in the 9000 Series					124,914
9990 Insurance Recoveries					
5120 Debt Service – Refunded Bonds					
5150 Bond Discounts					
5200 Interfund Transfers – Out					2,077,351
5300 Transfers Out to Component Units/Primary Governments					
Total Other Financing Sources (Uses)		\$2,005,000			\$52,563

Amounts Expressed in Whole Dollars	<u>General Fund</u> <u>(10)</u>	<u>Public Purpose Trust</u> <u>(27)</u>	<u>Other Compt Approved</u> <u>(28)</u>	<u>Athletic / Activity</u> <u>(29)</u>	<u>Capital Reserve</u> <u>(690.</u> <u>1850)</u> <u>(31)</u>
Special And Extraordinary Items					
9920 Special Items – Gains					
9930 Extraordinary Items – Gains					
5520 Special Items – Losses					
5530 Extraordinary Items – Losses					
Net Change In Fund Balances	(\$170,944)				
Fund Balance					
0001 Fund Balance - Beginning of Fiscal Year	14,517,981				
Fund Balance - End Of Year	\$14,347,037				

Amounts Expressed in Whole Dollars	<u>Capital Reserve (1431)</u> <u>(32)</u>	<u>Other Capital Projects</u> <u>Fund</u> <u>(39)</u>	<u>Debt Service</u> <u>(40)</u>	<u>Permanent</u> <u>(90)</u>	<u>Total Governmental</u> <u>Funds</u>
Special And Extraordinary Items					
9920 Special Items – Gains					
9930 Extraordinary Items – Gains					
5520 Special Items – Losses					
5530 Extraordinary Items – Losses					
Net Change In Fund Balances		(\$1,905,062)			(\$2,076,006)
Fund Balance					
0001 Fund Balance - Beginning of Fiscal Year		5,539,840			20,057,821
Fund Balance - End Of Year		\$3,634,778			\$17,981,815

Amounts Expressed in Whole Dollars	<u>Food Service</u> <u>(51)</u>	<u>Child Care</u> <u>Operations</u> <u>(52)</u>	<u>Other Enterprise</u> <u>(58)</u>	<u>TOTAL</u>	<u>Internal Service</u> <u>(60)</u>
Assets And Deferred Outflows Of Resources					
Current Assets					
0100 Cash and Cash Equivalents	7,121			7,121	
0110 Investments					
0130 Due From Other Funds					
0141 Due From Other Governments					
0142 State Revenue Receivable	3,340			3,340	
0143 Federal Revenue Receivable	60,780			60,780	
0146 Due from Primary Government					
0147 Due from Component Unit					
0150 Other Receivables	663			663	
0170 Inventories	15,398			15,398	
0180 Prepaid Expenses (Expenditures)					
0190 Other Current Assets					
Total Current Assets	\$87,302			\$87,302	
Noncurrent Assets					
0211 Land					
0212 Site Improvements (Net)					
0220 Buildings and Building Improvements (Net)					
0230 Machinery, Equipment and Furniture (Net)	170,705			170,705	
0250 Construction in Progress					
0260 Long Term Prepayments					
0290 Other Noncurrent Assets					
Total Noncurrent Assets	\$170,705			\$170,705	
0910 Deferred Outflows of Resources	257,857			257,857	
Total Assets And Deferred Outflows Of Resources	\$515,864			\$515,864	

Amounts Expressed in Whole Dollars	<u>Food Service</u> <u>(51)</u>	<u>Child Care</u> <u>Operations</u> <u>(52)</u>	<u>Other Enterprise</u> <u>(58)</u>	<u>TOTAL</u>	<u>Internal Service</u> <u>(60)</u>
Liabilities And Deferred Inflows Of Resources And Net Position					
Current Liabilities					
0400 Due to Other Funds	45,531			45,531	
0411 Due to Other Governments					
0413 Due to Component Unit					
0420 Accounts Payable	693			693	
0430 Contracts Payable					
0440 Current Portion of Long-Term Debt					
0450 Short-Term Payables					
0461 Accrued Salaries and Benefits					
0462 Payroll Deductions and Withholding					
0480 Unearned Revenues					
0490 Other Current Liabilities					
Total Current Liabilities	\$46,224			\$46,224	
Noncurrent Liabilities					
0510 Bonds Payable					
0520 Extended-Term Financing Agreements Payable					
0530 Lease-Purchase Obligations					
0540 Accumulated Compensated Absences					
0550 Authority Lease Obligations					
0560 Other Post-Employment Benefits (OPEB)					
0570 Net Pension Liability	1,128,040			1,128,040	
0599 Other Noncurrent Liabilities					
Total Noncurrent Liabilities	\$1,128,040			\$1,128,040	
Total Liabilities	\$1,174,264			\$1,174,264	
0950 Deferred Inflows of Resources	47,220			47,220	
Net Position					
0791 Net Investment in Capital Assets	170,705			170,705	
0008 Restricted Net Position (0792 – 0798)	4,279			4,279	
0799 Unrestricted Net Position	(880,604)			(880,604)	
Total Net Position	(\$705,620)			(\$705,620)	
Total Liabilities And Deferred Inflows Of Resources And Net Position	\$515,864			\$515,864	

Amounts Expressed in Whole Dollars	<u>Food Service</u> <u>(51)</u>	<u>Child Care Operations</u> <u>(52)</u>	<u>Other Enterprise</u> <u>(58)</u>	<u>TOTAL</u>	<u>Internal Service</u> <u>(60)</u>
Operating Revenues					
6600 Food Service Revenue	307,135			307,135	
0071 Charges for Services					
0072 Other Operating Revenue					
Total Operating Revenues	\$307,135			\$307,135	
Operating Expenses					
100 Personnel Services – Salaries	350,073			350,073	
200 Personnel Services – Employee Benefits	98,872			98,872	
300 Purchased Professional and Technical Services	500			500	
400 Purchased Property Services	1,466			1,466	
500 Other Purchased Services	1,245			1,245	
600 Supplies	395,271			395,271	
740 Depreciation	7,644			7,644	
810 Dues and Fees					
890 Miscellaneous Expenditures					
Total Operating Expenses	\$855,071			\$855,071	
Operating Income (Loss)	(\$547,936)			(\$547,936)	
Non Operating Revenues (Expenses)					
6500 Earnings on Investments					
6920 Contributions and Donations from Private Sources					
6930 Gains or Losses on Sale of Fixed Assets	(6,287)			(6,287)	
6991 Refunds of a Prior Year Expenditure					
7000 Revenue from State Sources	92,343			92,343	
8000 Revenue from Federal Sources	485,300			485,300	
820 Claims and Judgments Against the LEA					
830 Interest					
TOTAL Non Operating Revenues (Expenses)	\$571,356			\$571,356	
Income (Loss) Before Contributions And Transfers	\$23,420			\$23,420	

Amounts Expressed in Whole Dollars	<u>Food Service</u> <u>(51)</u>	<u>Child Care Operations</u> <u>(52)</u>	<u>Other Enterprise</u> <u>(58)</u>	<u>TOTAL</u>	<u>Internal Service</u> <u>(60)</u>
Contributions, Transfers, and Special and Extraordinary Items					
5200 Interfund Transfers – Out					
5300 Transfers Out to Component Units/Primary Governments					
5520 Special Items – Losses					
5530 Extraordinary Items – Losses					
9300 Interfund Transfers - IN	72,351			72,351	
9500 Capital Contributions					
9700 Transfers IN From Component Units/Primary Governments					
9920 Special Items – Gains					
9930 Extraordinary Items – Gains					
Change In Net Position	\$95,771			\$95,771	
0002 Net Position - Beginning of Fiscal Year	(801,391)			(801,391)	
0003 Accounting Changes / Residual Equity Transfers					
Net Position - End Of Year	(\$705,620)			(\$705,620)	

Amounts Expressed in Whole Dollars	<u>Food Service</u> <u>(51)</u>	<u>Child Care Operations</u> <u>(52)</u>	<u>Other Enterprise</u> <u>(58)</u>	<u>TOTAL</u>	<u>Internal Service(60)</u>
Cash Flows From Operating Activities					
0011 Cash Receipts From Users	322,755			322,755	
0012 Cash Receipts From Assessments Made to Other Funds					
0013 Cash Receipts From Earnings on Investments					
0014 Cash Receipts From Other Operating Revenue					
0015 Cash Payments To Employees For Services	504,335			504,335	
0016 Cash Payments For Insurance Claims					
0017 Cash Payments To Suppliers For Goods and Services	378,508			378,508	
0018 Cash Payments For Other Operating Expenses	12,115			12,115	
Net Cash Provided By (Used For) Operating Activities	(\$572,203)			(\$572,203)	
Cash Flows From Non-Capital Financing Activities					
0021 Receipts From Local Sources - 6000					
0022 Receipts From State Sources - 7000	92,249			92,249	
0023 Receipts From Federal Sources -8000	421,994			421,994	
0024 Notes and Loans Received (Repaid)					
0025 Interest Paid on Notes/Loans - 5100-830					
0026 Operating Transfers In (Out)/Residual Equity Trans	70,000			70,000	
0027 Operating Transfers In (Out) Primary Government / Comp Unit					
0028 Receipts From Refund of Prior Year Expenditures - 6991					
0029 Special and Extraordinary Gains (losses)					
0030 Receipts from Insurance Recoveries -9990					
Net Cash Prov By (Used for) Non-Capital Financing Activities	\$584,243			\$584,243	
Cash Flows From Capital and Related Financing Activities					
0031 Payments For Fac Acq, Const, and Imp - 4000	(13,031)			(13,031)	
0032 Gain / (Loss) on Sale of Fixed Assets - 6930					
0033 Proceeds From Extended Term Financing - 9200					
0034 Principal Paid on Financing Agreements					
0035 Interest Paid on Financing Agreements - 5100-830					
0036 (Inc) Dec in Contributed Capital					
Net Cash Prov By (Used for) Capital and Related Financing Activities	(\$13,031)			(\$13,031)	
Cash Flows From Investing Activities					
0041 Earnings on Investments - 6500					
0042 Purchase of Inv Securities / Deposits to Inv Pools					
0043 Receipts From Investment Pool Withdrawals					
0044 Proceeds from Sale and Maturity of Inv Securities					

LEA : 105253903 General McLane SD

Printed 10/31/2018 9:51:00 AM

0045 Loans Received (Paid)

Net Cash Prov By (Used for) Investing Activities

	<u>Food Service</u> <u>(51)</u>	<u>Child Care Operations</u> <u>(52)</u>	<u>Other Enterprise</u> <u>(58)</u>	<u>TOTAL</u>	<u>Internal Service</u> <u>(60)</u>
Net Increase (Decrease) in Cash Flows	(991)			(991)	
0004 Cash and Cash Equivalents Beginning of Year	8,113			8,113	
Cash and Cash Equivalents at Year End	\$7,122			\$7,122	

Reconciliation of Operating Income (Loss) To Net Cash Provided by (Used For) Operating Activities

0005 Operating Income (Loss) per REP	(547,936)			(547,936)	
Adjustments					
0051 Depreciation and Net Amortization	7,644			7,644	
0052 Provision for Uncollectible Accounts					
0053 Other Adjustments					
Effect of Changes in Assets, Liabilities, Deferred Outflows and Deferred Inflows					
0054 (Inc) Dec In Accounts Receivable (0120-0150)	188			188	
0055 Advances to Other Funds (0160)					
0056 (Inc) Dec in Inventories (0170)	3,219			3,219	
0057 (Inc) Dec in Prepaid Expenses (0180)	4,995			4,995	
0058 (Inc) Dec in Other Current or Noncurrent Assets					
0064 Deferred Outflows (0910)					
0059 Inc (Dec) in Accounts Payable (0400-0450)	(40,312)			(40,312)	
0060 Inc (Dec) in Accrued Salaries/Benefits (0461)					
0065 Inc (Dec) in Net Pension Liabilities (0570)					
0066 Inc (Dec) in Other Postemp Benefit Oblig (0560)					
0061 Inc (Dec) in Payroll Deductions/Withholding (0462)					
0062 Inc (Dec) in Unearned Revenue (0480)					
0063 Inc (Dec) in Other Current or Noncurrent Liabilities					
0067 Deferred Inflows (0950)					
Total Adjustments	(\$24,266)			(\$24,266)	
Cash Provided By (Used for) Total	(\$572,202)			(\$572,202)	

COMBINED STATEMENT OF CASH FLOWS
SCHEDULE OF NONCASH INVESTING, CAPITAL, AND FINANCING ACTIVITIES

Explanation of Transaction and Balance Sheet Effect	Amount
USDA Commodities Received	61,456
Total	\$61,456

LEA : 105253903 General McLane SD

Printed 10/31/2018 9:51:01 AM

Amounts Expressed in Whole Dollars

Private Purpose Trust
(71)

Investment Trust
(72)

Pension Trust
(73)

Activity
(81)

Assets And Deferred Outflows Of Resources

Assets

0100 Cash and Cash Equivalents				80,778
0110 Investments				
0130 Due From Other Funds				
0147 Due from Component Unit				
0150 Other Receivables				
0170 Inventories				
0180 Prepaid Expenses (Expenditures)				
0190 Other Current Assets				
0220 Buildings and Building Improvements (Net)				
0230 Machinery, Equipment and Furniture (Net)				

Total Assets **\$80,778**

0910 Deferred Outflows of Resources

Total Assets And Deferred Outflows Of Resources **\$80,778**

LEA : 105253903 General McLane SD

Printed 10/31/2018 9:51:01 AM

Amounts Expressed in Whole Dollars	<u>Other Agency</u> <u>(89)</u>	<u>Discrete Component Units</u> <u>(98)</u>	<u>Discrete Component Units</u> <u>(99)</u>	<u>Total Fiduciary Funds</u>
Assets And Deferred Outflows Of Resources				
Assets				
0100 Cash and Cash Equivalents		184,826		265,604
0110 Investments		364,789		364,789
0130 Due From Other Funds				
0147 Due from Component Unit				
0150 Other Receivables				
0170 Inventories				
0180 Prepaid Expenses (Expenditures)				
0190 Other Current Assets				
0220 Buildings and Building Improvements (Net)				
0230 Machinery, Equipment and Furniture (Net)				
Total Assets		\$549,615		\$630,393
0910 Deferred Outflows of Resources				
Total Assets And Deferred Outflows Of Resources		\$549,615		\$630,393

LEA : 105253903 General McLane SD

Printed 10/31/2018 9:51:01 AM

Amounts Expressed in Whole Dollars

Private Purpose Trust
(71)

Investment Trust
(72)

Pension Trust
(73)

Activity
(81)

Liabilities, Deferred Inflows Of Resources And Net Position

Liabilities

0400 Due to Other Funds				
0411 Due to Other Governments				
0412 Due to Primary Government				
0413 Due to Component Unit				
0420 Accounts Payable				
0430 Contracts Payable				
0450 Short-Term Payables				
0461 Accrued Salaries and Benefits				
0462 Payroll Deductions and Withholding				
0480 Unearned Revenues				
0490 Other Current Liabilities				80,778

Total Liabilities **\$80,778**

0950 Deferred Inflows of Resources

Net Position

0791 Net Investment in Capital Assets				
0009 Restricted Net Position (0792 – 0798)				
0799 Unrestricted Net Position				

Total Net Position **\$80,778**

Total Liabilities, Deferred Inflows Of Resources And Net Position **\$80,778**

LEA : 105253903 General McLane SD

Printed 10/31/2018 9:51:01 AM

Amounts Expressed in Whole Dollars

<u>Other Agency</u>	<u>Discrete Component Units</u>	<u>Discrete Component Units</u>	<u>Total Fiduciary Funds</u>
(89)	(98)	(99)	

Liabilities, Deferred Inflows Of Resources And Net Position

Liabilities

0400 Due to Other Funds			
0411 Due to Other Governments			
0412 Due to Primary Government			
0413 Due to Component Unit			
0420 Accounts Payable			
0430 Contracts Payable			
0450 Short-Term Payables			
0461 Accrued Salaries and Benefits			
0462 Payroll Deductions and Withholding			
0480 Unearned Revenues			
0490 Other Current Liabilities			80,778
Total Liabilities			\$80,778

0950 Deferred Inflows of Resources

Net Position

0791 Net Investment in Capital Assets			
0009 Restricted Net Position (0792 – 0798)		549,615	549,615
0799 Unrestricted Net Position			
Total Net Position		\$549,615	\$549,615
Total Liabilities, Deferred Inflows Of Resources And Net Position		\$549,615	\$630,393

Amounts Expressed in Whole Dollars	<u>Private Purpose Trust</u> (71)	<u>Investment Trust</u> (72)	<u>Pension Trust</u> (73)	<u>Discrete Component</u> <u>Units</u> (98)	<u>Discrete Component</u> <u>Units</u> (99)	<u>Total Fiduciary</u> <u>Funds</u>
Additions						
0091 Gifts and Contributions				49,756		49,756
0092 Other Additions				31,570		31,570
Deductions						
0093 Scholarships Awarded				18,600		18,600
0094 Other Deductions				15,779		15,779
Change In Net Position				\$46,947		\$46,947
0006 Net Position – Beginning of Fiscal Year				502,668		502,668
0007 Net Position Held in Trust for Pension Benefits						
Net Position - End of Fiscal Year				\$549,615		\$549,615

	<u>Revenue Reported In Current Year</u>	<u>Current Year Tax Accrual</u>	<u>Prior Year Tax Accrual</u>	<u>Taxes Collected In Current Year</u>
<u>Revenue from Local Sources</u>				
6111 Current Real Estate Taxes	11,000,777.38			11,000,777.38
6112 Interim Real Estate Taxes	74,283.60			74,283.60
6113 Public Utility Realty Taxes	13,404.92			13,404.92
6114 Payments in Lieu of Current Taxes - State / Local	31,596.67			31,596.67
6143 Current Act 511 Local Services Taxes	30,727.05			30,727.05
6151 Current Act 511 Earned Income Taxes	1,734,037.79	110,653.40	94,499.33	1,717,883.72
6153 Current Act 511 Real Estate Transfer Taxes	172,843.28	19,136.63	10,749.79	164,456.44
6411 Delinquent Real Estate Taxes	498,959.35	126,777.94	79,018.00	451,199.41
6500 Earnings on Investments	185,047.46			
6700 Revenues from LEA Activities	32,620.51			
6832 Federal IDEA Revenue Received as Pass Through	409,536.01			
6910 Rentals	64,815.50			
6941 Regular Day School Tuition	80,000.00			
6944 Receipts from Other LEAs in Pennsylvania - Education	288,581.09			
6949 Other Tuition from Patrons	7,200.00			
6999 Other Revenues Not Specified Above	58,363.79			
TOTAL Revenue from Local Sources	\$14,682,794.40	\$256,567.97	\$184,267.12	\$13,484,329.19

**Revenue Reported
In Current Year**

Revenue from State Sources

7110 Basic Education Funding	10,526,478.44		
7160 Tuition for Orphans Subsidy	27,330.78		
7271 Special Education funds for School-Aged Pupils	1,492,570.53		
7311 Pupil Transportation Subsidy	759,240.61		
7330 Health Services (Medical, Dental, Nurse, Act 25)	40,677.50		
7340 State Property Tax Reduction Allocation	519,751.19		
7505 Ready to Learn Block Grant	329,440.00		
7810 State Share of Social Security and Medicare Taxes	677,173.27		
7820 State Share of Retirement Contributions	2,842,031.53		
TOTAL Revenue from State Sources	\$17,214,693.85		

**Revenue Reported
In Current Year**

Revenue from Federal Sources

8514 NCLB, Title I - Improving the Academic Achievement of the Disadvantaged	316,195.00		
8515 NCLB, Title II - Preparing, Training and Recruiting High Quality Teachers and Principals	45,896.00		
8517 NCLB, Title IV - 21St Century Schools	9,999.67		
8810 School-Based Access Medicaid Reimbursement Program (SBAP) Reimbursements (Access)	121,508.01		
8820 Medical Assistance Reimbursement for Administrative Claiming (Quarterly) Program	3,951.11		
TOTAL Revenue from Federal Sources	\$497,549.79		

Revenue Reported
In Current Year

Other Financing Sources

9910 Other Financing Sources Not Listed in the 9000 Series	124,914.33			
TOTAL Other Financing Sources	\$124,914.33			
TOTAL FROM ALL SOURCES	\$32,519,952.37	\$256,567.97	\$184,267.12	\$13,484,329.19

Revenue from Local Sources	14,682,794.40
Revenue from State Sources	17,214,693.85
Revenue from Federal Sources	497,549.79
Other Financing Sources	124,914.33
TOTAL FROM ALL SOURCES	\$32,519,952.37

General Fund (10)

1000 Instruction	<u>Total</u>
100 <u>Personnel Services – Salaries</u>	
100 Personnel Services – Salaries	10,275,872.20
Total Personnel Services – Salaries	\$10,275,872.20
200 <u>Personnel Services – Employee Benefits</u>	
210 Group Insurance – Contracted Provider	6,179.67
220 Social Security Contributions	770,740.85
230 PSERS Retirement Contributions	3,317,190.13
250 Unemployment Compensation	3,802.78
260 Workers' Compensation	85,806.10
270 Group Insurance – Self-Insurance	1,956,006.34
Total Personnel Services – Employee Benefits	\$6,139,725.87
300 <u>Purchased Professional and Technical Services</u>	
322 Professional Educational Services – Ius	287,396.03
329 Professional Educational Services – Other	535,326.36
340 Technical Services	136,537.48
390 Other Purchased Professional and Technical Services	151,693.98
Total Purchased Professional and Technical Services	\$1,110,953.85
500 <u>Other Purchased Services</u>	
561 Tuition To Other School Districts Within the State	136,023.52
562 Tuition To Pennsylvania Charter Schools	460,870.47
564 Tuition To Career and Technology Centers	463,478.91
567 Tuition To Approved Private Schools (APS) and PA Chartered Schools for the Deaf and Blind	63,597.86
568 Tuition To Private Residential Rehabilitative Institutions (PRRI) [In-State] and Detention Centers	6,070.90
580 Travel	27,406.42
Total Other Purchased Services	\$1,157,448.08
600 <u>Supplies</u>	
610 General Supplies	456,758.08
640 Books and Periodicals	119,847.48
Total Supplies	\$576,605.56
700 <u>Property</u>	
752 Capital Equipment – Original and Additional	59,195.99
762 Capitalized Equipment - Replacement	22,632.22
Total Property	\$81,828.21
Total 1000 Instruction	\$19,342,433.77

General Fund (10)

1100 Regular Programs – Elementary / Secondary	<u>Elementary</u>	<u>Secondary</u>	<u>Federal</u>	<u>Total</u>
100 Personnel Services – Salaries				
100 Personnel Services – Salaries	3,879,528.89	3,677,306.02	234,765.13	7,791,600.04
Total Personnel Services – Salaries	\$3,879,528.89	\$3,677,306.02	\$234,765.13	\$7,791,600.04
200 Personnel Services – Employee Benefits				
210 Group Insurance – Contracted Provider	2,242.18	2,018.02	189.00	4,449.20
220 Social Security Contributions	290,410.51	276,276.57	17,453.62	584,140.70
230 PSERS Retirement Contributions	1,243,061.26	1,234,381.45	34,408.00	2,511,850.71
250 Unemployment Compensation	1,250.88	1,151.23	54.19	2,456.30
260 Workers' Compensation	32,387.32	30,698.43	1,959.93	65,045.68
270 Group Insurance – Self-Insurance	804,096.34	671,721.43	59,030.95	1,534,848.72
Total Personnel Services – Employee Benefits	\$2,373,448.49	\$2,216,247.13	\$113,095.69	\$4,702,791.31
300 Purchased Professional and Technical Services				
322 Professional Educational Services – Ius	739.83	739.82		1,479.65
329 Professional Educational Services – Other			4,787.00	4,787.00
340 Technical Services	78,018.99	58,518.49		136,537.48
390 Other Purchased Professional and Technical Services		11,874.33	2,159.65	14,033.98
Total Purchased Professional and Technical Services	\$78,758.82	\$71,132.64	\$6,946.65	\$156,838.11
500 Other Purchased Services				
561 Tuition To Other School Districts Within the State	714.00	29,084.00		29,798.00
562 Tuition To Pennsylvania Charter Schools	160,230.94	207,832.86		368,063.80
580 Travel	3,148.11	7,974.75	12,283.48	23,406.34
Total Other Purchased Services	\$164,093.05	\$244,891.61	\$12,283.48	\$421,268.14
600 Supplies				
610 General Supplies	92,006.61	320,248.24		412,254.85
640 Books and Periodicals	74,012.59	43,230.89		117,243.48
Total Supplies	\$166,019.20	\$363,479.13		\$529,498.33
700 Property				
752 Capital Equipment – Original and Additional		59,195.99		59,195.99
762 Capitalized Equipment - Replacement	16,091.73	2,472.07		18,563.80
Total Property	\$16,091.73	\$61,668.06		\$77,759.79
Total 1100 Regular Programs – Elementary / Secondary	\$6,677,940.18	\$6,634,724.59	\$367,090.95	\$13,679,755.72

General Fund (10)

	<u>Elementary</u>	<u>Secondary</u>	<u>Federal</u>	<u>Total</u>
1110 Regular Programs				
100 Personnel Services – Salaries				
100 Personnel Services – Salaries	3,879,528.89	3,677,306.02		7,556,834.91
Total Personnel Services – Salaries	\$3,879,528.89	\$3,677,306.02		\$7,556,834.91
200 Personnel Services – Employee Benefits				
210 Group Insurance – Contracted Provider	2,242.18	2,018.02		4,260.20
220 Social Security Contributions	290,410.51	276,276.57		566,687.08
230 PSERS Retirement Contributions	1,243,061.26	1,234,381.45		2,477,442.71
250 Unemployment Compensation	1,250.88	1,151.23		2,402.11
260 Workers' Compensation	32,387.32	30,698.43		63,085.75
270 Group Insurance – Self-Insurance	804,096.34	671,721.43		1,475,817.77
Total Personnel Services – Employee Benefits	\$2,373,448.49	\$2,216,247.13		\$4,589,695.62
300 Purchased Professional and Technical Services				
322 Professional Educational Services – Ius	739.83	739.82		1,479.65
340 Technical Services	78,018.99	58,518.49		136,537.48
390 Other Purchased Professional and Technical Services		11,874.33		11,874.33
Total Purchased Professional and Technical Services	\$78,758.82	\$71,132.64		\$149,891.46
500 Other Purchased Services				
561 Tuition To Other School Districts Within the State	714.00	29,084.00		29,798.00
562 Tuition To Pennsylvania Charter Schools	160,230.94	207,832.86		368,063.80
580 Travel	3,148.11	7,974.75		11,122.86
Total Other Purchased Services	\$164,093.05	\$244,891.61		\$408,984.66
600 Supplies				
610 General Supplies	92,006.61	320,248.24		412,254.85
640 Books and Periodicals	74,012.59	43,230.89		117,243.48
Total Supplies	\$166,019.20	\$363,479.13		\$529,498.33
700 Property				
752 Capital Equipment – Original and Additional		59,195.99		59,195.99
762 Capitalized Equipment - Replacement	16,091.73	2,472.07		18,563.80
Total Property	\$16,091.73	\$61,668.06		\$77,759.79
Total 1110 Regular Programs	\$6,677,940.18	\$6,634,724.59		\$13,312,664.77

General Fund (10)

1190 Federally-Funded Regular Programs

100 Personnel Services – Salaries

	<u>Elementary</u>	<u>Secondary</u>	<u>Federal</u>	<u>Total</u>
100 Personnel Services – Salaries			234,765.13	234,765.13
Total Personnel Services – Salaries			\$234,765.13	\$234,765.13

200 Personnel Services – Employee Benefits

210 Group Insurance – Contracted Provider			189.00	189.00
220 Social Security Contributions			17,453.62	17,453.62
230 PSERS Retirement Contributions			34,408.00	34,408.00
250 Unemployment Compensation			54.19	54.19
260 Workers' Compensation			1,959.93	1,959.93
270 Group Insurance – Self-Insurance			59,030.95	59,030.95
Total Personnel Services – Employee Benefits			\$113,095.69	\$113,095.69

300 Purchased Professional and Technical Services

329 Professional Educational Services – Other			4,787.00	4,787.00
390 Other Purchased Professional and Technical Services			2,159.65	2,159.65
Total Purchased Professional and Technical Services			\$6,946.65	\$6,946.65

500 Other Purchased Services

580 Travel			12,283.48	12,283.48
Total Other Purchased Services			\$12,283.48	\$12,283.48

Total 1190 Federally-Funded Regular Programs

Total 1190 Federally-Funded Regular Programs			\$367,090.95	\$367,090.95
---	--	--	---------------------	---------------------

General Fund (10)

1200 Special Programs – Elementary / Secondary	<u>Elementary</u>	<u>Secondary</u>	<u>Federal</u>	<u>Total</u>
100 Personnel Services – Salaries				
100 Personnel Services – Salaries	1,074,186.58	808,397.21		1,882,583.79
Total Personnel Services – Salaries	\$1,074,186.58	\$808,397.21		\$1,882,583.79
200 Personnel Services – Employee Benefits				
210 Group Insurance – Contracted Provider	744.37	635.13		1,379.50
220 Social Security Contributions	80,412.25	60,974.92		141,387.17
230 PSERS Retirement Contributions	347,064.28	262,305.30		609,369.58
250 Unemployment Compensation	664.73	498.11		1,162.84
260 Workers' Compensation	8,972.83	6,764.58		15,737.41
270 Group Insurance – Self-Insurance	182,935.72	124,252.31		307,188.03
Total Personnel Services – Employee Benefits	\$620,794.18	\$455,430.35		\$1,076,224.53
300 Purchased Professional and Technical Services				
322 Professional Educational Services – Ius	97,881.80	79,200.39	89,966.00	267,048.19
329 Professional Educational Services – Other	65,569.60	108,171.76	355,088.23	528,829.59
Total Purchased Professional and Technical Services	\$163,451.40	\$187,372.15	\$445,054.23	\$795,877.78
500 Other Purchased Services				
561 Tuition To Other School Districts Within the State	3,026.86	29,175.63		32,202.49
562 Tuition To Pennsylvania Charter Schools		92,806.67		92,806.67
564 Tuition To Career and Technology Centers		21,718.91		21,718.91
567 Tuition To Approved Private Schools (APS) and PA Chartered Schools for the Deaf and Blind	31,798.93	31,798.93		63,597.86
568 Tuition To Private Residential Rehabilitative Institutions (PRRI) [In-State] and Detention Centers		6,070.90		6,070.90
580 Travel	1,992.64	1,986.73		3,979.37
Total Other Purchased Services	\$36,818.43	\$183,557.77		\$220,376.20
600 Supplies				
610 General Supplies	10,890.33	12,206.42		23,096.75
640 Books and Periodicals	1,012.00	1,012.00		2,024.00
Total Supplies	\$11,902.33	\$13,218.42		\$25,120.75
Total 1200 Special Programs – Elementary / Secondary	\$1,907,152.92	\$1,647,975.90	\$445,054.23	\$4,000,183.05

General Fund (10)

1210 Life Skills Support

	<u>Elementary</u>	<u>Secondary</u>	<u>Federal</u>	<u>Total</u>
100 Personnel Services – Salaries				
100 Personnel Services – Salaries	175,833.28	125,088.05		300,921.33
Total Personnel Services – Salaries	\$175,833.28	\$125,088.05		\$300,921.33
200 Personnel Services – Employee Benefits				
210 Group Insurance – Contracted Provider	139.98	94.78		234.76
220 Social Security Contributions	13,302.73	9,470.23		22,772.96
230 PSERS Retirement Contributions	56,169.34	40,684.97		96,854.31
250 Unemployment Compensation	151.41	78.17		229.58
260 Workers' Compensation	1,468.03	1,044.25		2,512.28
270 Group Insurance – Self-Insurance	24,119.63	13,699.45		37,819.08
Total Personnel Services – Employee Benefits	\$95,351.12	\$65,071.85		\$160,422.97
600 Supplies				
610 General Supplies	2,472.77	5,692.31		8,165.08
640 Books and Periodicals	38.70	38.70		77.40
Total Supplies	\$2,511.47	\$5,731.01		\$8,242.48
Total 1210 Life Skills Support	\$273,695.87	\$195,890.91		\$469,586.78

General Fund (10)

1220 Sensory Support

	<u>Elementary</u>	<u>Secondary</u>	<u>Federal</u>	<u>Total</u>
100 Personnel Services – Salaries				
100 Personnel Services – Salaries	101,609.88	25,748.37		127,358.25
Total Personnel Services – Salaries	\$101,609.88	\$25,748.37		\$127,358.25
200 Personnel Services – Employee Benefits				
210 Group Insurance – Contracted Provider	60.16	15.04		75.20
220 Social Security Contributions	7,563.73	1,917.79		9,481.52
230 PSERS Retirement Contributions	33,094.53	8,386.20		41,480.73
250 Unemployment Compensation	28.68	6.70		35.38
260 Workers' Compensation	848.07	215.01		1,063.08
270 Group Insurance – Self-Insurance	18,980.33	4,745.16		23,725.49
Total Personnel Services – Employee Benefits	\$60,575.50	\$15,285.90		\$75,861.40
300 Purchased Professional and Technical Services				
322 Professional Educational Services – Ius	8,544.47	1,868.78		10,413.25
Total Purchased Professional and Technical Services	\$8,544.47	\$1,868.78		\$10,413.25
600 Supplies				
610 General Supplies	863.12			863.12
Total Supplies	\$863.12			\$863.12
Total 1220 Sensory Support	\$171,592.97	\$42,903.05		\$214,496.02

General Fund (10)

	<u>Elementary</u>	<u>Secondary</u>	<u>Federal</u>	<u>Total</u>
1230 Emotional Support				
100 Personnel Services – Salaries				
100 Personnel Services – Salaries	351,435.90	284,475.34		635,911.24
Total Personnel Services – Salaries	\$351,435.90	\$284,475.34		\$635,911.24
200 Personnel Services – Employee Benefits				
210 Group Insurance – Contracted Provider	264.82	274.11		538.93
220 Social Security Contributions	26,116.23	21,347.36		47,463.59
230 PSERS Retirement Contributions	112,697.33	91,890.75		204,588.08
250 Unemployment Compensation	302.68	193.63		496.31
260 Workers' Compensation	2,934.11	2,374.74		5,308.85
270 Group Insurance – Self-Insurance	69,690.94	49,238.20		118,929.14
Total Personnel Services – Employee Benefits	\$212,006.11	\$165,318.79		\$377,324.90
300 Purchased Professional and Technical Services				
329 Professional Educational Services – Other	39,946.31	108,171.76		148,118.07
Total Purchased Professional and Technical Services	\$39,946.31	\$108,171.76		\$148,118.07
600 Supplies				
610 General Supplies	5,605.22	5,530.17		11,135.39
640 Books and Periodicals	67.05	67.05		134.10
Total Supplies	\$5,672.27	\$5,597.22		\$11,269.49
Total 1230 Emotional Support	\$609,060.59	\$563,563.11		\$1,172,623.70

General Fund (10)

	<u>Elementary</u>	<u>Secondary</u>	<u>Federal</u>	<u>Total</u>
1240 Academic Support				
100 Personnel Services – Salaries				
100 Personnel Services – Salaries	391,454.54	314,062.71		705,517.25
Total Personnel Services – Salaries	\$391,454.54	\$314,062.71		\$705,517.25
200 Personnel Services – Employee Benefits				
210 Group Insurance – Contracted Provider	230.37	203.36		433.73
220 Social Security Contributions	29,266.09	23,647.55		52,913.64
230 PSERS Retirement Contributions	127,496.80	102,119.19		229,615.99
250 Unemployment Compensation	107.95	156.32		264.27
260 Workers' Compensation	3,268.04	2,621.72		5,889.76
270 Group Insurance – Self-Insurance	70,144.82	49,961.45		120,106.27
Total Personnel Services – Employee Benefits	\$230,514.07	\$178,709.59		\$409,223.66
600 Supplies				
610 General Supplies	1,759.97	794.75		2,554.72
640 Books and Periodicals	906.25	906.25		1,812.50
Total Supplies	\$2,666.22	\$1,701.00		\$4,367.22
Total 1240 Academic Support	\$624,634.83	\$494,473.30		\$1,119,108.13

General Fund (10)

	<u>Elementary</u>	<u>Secondary</u>	<u>Federal</u>	<u>Total</u>
1241 Learning Support – Public				
100 Personnel Services – Salaries				
100 Personnel Services – Salaries	382,925.26	299,395.51		682,320.77
Total Personnel Services – Salaries	\$382,925.26	\$299,395.51		\$682,320.77
200 Personnel Services – Employee Benefits				
210 Group Insurance – Contracted Provider	225.63	195.56		421.19
220 Social Security Contributions	28,625.98	22,537.68		51,163.66
230 PSERS Retirement Contributions	124,718.78	97,342.34		222,061.12
250 Unemployment Compensation	105.74	152.64		258.38
260 Workers' Compensation	3,196.74	2,499.38		5,696.12
270 Group Insurance – Self-Insurance	68,008.53	47,760.09		115,768.62
Total Personnel Services – Employee Benefits	\$224,881.40	\$170,487.69		\$395,369.09
600 Supplies				
610 General Supplies	1,163.30	393.79		1,557.09
Total Supplies	\$1,163.30	\$393.79		\$1,557.09
Total 1241 Learning Support – Public	\$608,969.96	\$470,276.99		\$1,079,246.95

General Fund (10)

1243 Gifted Support

100 Personnel Services – Salaries

	<u>Elementary</u>	<u>Secondary</u>	<u>Federal</u>	<u>Total</u>
100 Personnel Services – Salaries	8,529.28	14,667.20		23,196.48
Total Personnel Services – Salaries	\$8,529.28	\$14,667.20		\$23,196.48

200 Personnel Services – Employee Benefits

210 Group Insurance – Contracted Provider	4.74	7.80		12.54
220 Social Security Contributions	640.11	1,109.87		1,749.98
230 PSERS Retirement Contributions	2,778.02	4,776.85		7,554.87
250 Unemployment Compensation	2.21	3.68		5.89
260 Workers' Compensation	71.30	122.34		193.64
270 Group Insurance – Self-Insurance	2,136.29	2,201.36		4,337.65
Total Personnel Services – Employee Benefits	\$5,632.67	\$8,221.90		\$13,854.57

600 Supplies

610 General Supplies	596.67	400.96		997.63
640 Books and Periodicals	906.25	906.25		1,812.50

Total Supplies	\$1,502.92	\$1,307.21		\$2,810.13
Total 1243 Gifted Support	\$15,664.87	\$24,196.31		\$39,861.18

General Fund (10)

1260 Physical Support

300 Purchased Professional and Technical Services

322 Professional Educational Services – lus

Total Purchased Professional and Technical Services

Total 1260 Physical Support

	<u>Elementary</u>	<u>Secondary</u>	<u>Federal</u>	<u>Total</u>
322 Professional Educational Services – lus	13,431.66	13,431.66		26,863.32
Total Purchased Professional and Technical Services	\$13,431.66	\$13,431.66		\$26,863.32
Total 1260 Physical Support	\$13,431.66	\$13,431.66		\$26,863.32

General Fund (10)

	<u>Elementary</u>	<u>Secondary</u>	<u>Federal</u>	<u>Total</u>
1290 Special Programs - Other Support				
100 Personnel Services – Salaries				
100 Personnel Services – Salaries	53,852.98	59,022.74		112,875.72
Total Personnel Services – Salaries	\$53,852.98	\$59,022.74		\$112,875.72
200 Personnel Services – Employee Benefits				
210 Group Insurance – Contracted Provider	49.04	47.84		96.88
220 Social Security Contributions	4,163.47	4,591.99		8,755.46
230 PSERS Retirement Contributions	17,606.28	19,224.19		36,830.47
250 Unemployment Compensation	74.01	63.29		137.30
260 Workers' Compensation	454.58	508.86		963.44
270 Group Insurance – Self-Insurance		6,608.05		6,608.05
Total Personnel Services – Employee Benefits	\$22,347.38	\$31,044.22		\$53,391.60
300 Purchased Professional and Technical Services				
322 Professional Educational Services – Ius	75,905.67	63,899.95	89,966.00	229,771.62
329 Professional Educational Services – Other	25,623.29		355,088.23	380,711.52
Total Purchased Professional and Technical Services	\$101,528.96	\$63,899.95	\$445,054.23	\$610,483.14
500 Other Purchased Services				
561 Tuition To Other School Districts Within the State	3,026.86	29,175.63		32,202.49
562 Tuition To Pennsylvania Charter Schools		92,806.67		92,806.67
564 Tuition To Career and Technology Centers		21,718.91		21,718.91
567 Tuition To Approved Private Schools (APS) and PA Chartered Schools for the Deaf and Blind	31,798.93	31,798.93		63,597.86
568 Tuition To Private Residential Rehabilitative Institutions (PRRI) [In-State] and Detention Centers		6,070.90		6,070.90
580 Travel	1,992.64	1,986.73		3,979.37
Total Other Purchased Services	\$36,818.43	\$183,557.77		\$220,376.20
600 Supplies				
610 General Supplies	189.25	189.19		378.44
Total Supplies	\$189.25	\$189.19		\$378.44
Total 1290 Special Programs - Other Support	\$214,737.00	\$337,713.87	\$445,054.23	\$997,505.10

General Fund (10)

1300 Vocational Education

	<u>Elementary</u>	<u>Secondary</u>	<u>Federal</u>	<u>Total</u>
100 Personnel Services – Salaries				
100 Personnel Services – Salaries		561,798.00		561,798.00
Total Personnel Services – Salaries		\$561,798.00		\$561,798.00
200 Personnel Services – Employee Benefits				
210 Group Insurance – Contracted Provider		332.17		332.17
220 Social Security Contributions		42,215.76		42,215.76
230 PSERS Retirement Contributions		182,977.64		182,977.64
250 Unemployment Compensation		174.51		174.51
260 Workers' Compensation		4,690.03		4,690.03
270 Group Insurance – Self-Insurance		105,424.65		105,424.65
Total Personnel Services – Employee Benefits		\$335,814.76		\$335,814.76
500 Other Purchased Services				
564 Tuition To Career and Technology Centers		392,788.00		392,788.00
Total Other Purchased Services		\$392,788.00		\$392,788.00
600 Supplies				
610 General Supplies		21,406.48		21,406.48
640 Books and Periodicals		580.00		580.00
Total Supplies		\$21,986.48		\$21,986.48
700 Property				
762 Capitalized Equipment - Replacement		4,068.42		4,068.42
Total Property		\$4,068.42		\$4,068.42
Total 1300 Vocational Education		\$1,316,455.66		\$1,316,455.66

General Fund (10)

	<u>Elementary</u>	<u>Secondary</u>	<u>Federal</u>	<u>Total</u>
1400 Other Instructional Programs – Elementary / Secondary				
100 Personnel Services – Salaries				
100 Personnel Services – Salaries	153.00	39,737.37		39,890.37
Total Personnel Services – Salaries	\$153.00	\$39,737.37		\$39,890.37
200 Personnel Services – Employee Benefits				
210 Group Insurance – Contracted Provider		18.80		18.80
220 Social Security Contributions	11.41	2,985.81		2,997.22
230 PSERS Retirement Contributions	49.84	12,942.36		12,992.20
250 Unemployment Compensation		9.13		9.13
260 Workers' Compensation	1.27	331.71		332.98
270 Group Insurance – Self-Insurance		8,544.94		8,544.94
Total Personnel Services – Employee Benefits	\$62.52	\$24,832.75		\$24,895.27
300 Purchased Professional and Technical Services				
322 Professional Educational Services – Ius		18,868.19		18,868.19
329 Professional Educational Services – Other		1,709.77		1,709.77
390 Other Purchased Professional and Technical Services	16,560.00	121,100.00		137,660.00
Total Purchased Professional and Technical Services	\$16,560.00	\$141,677.96		\$158,237.96
500 Other Purchased Services				
561 Tuition To Other School Districts Within the State	25,896.00	48,127.03		74,023.03
564 Tuition To Career and Technology Centers		48,972.00		48,972.00
580 Travel	10.36	10.35		20.71
Total Other Purchased Services	\$25,906.36	\$97,109.38		\$123,015.74
Total 1400 Other Instructional Programs – Elementary / Secondary	\$42,681.88	\$303,357.46		\$346,039.34

LEA : 105253903 General McLane SD

Printed 10/31/2018 9:51:05 AM

General Fund (10)

1410 Drivers' Education

	<u>Elementary</u>	<u>Secondary</u>	<u>Federal</u>	<u>Total</u>
100 Personnel Services – Salaries				
100 Personnel Services – Salaries		36,158.87		36,158.87
Total Personnel Services – Salaries		\$36,158.87		\$36,158.87
200 Personnel Services – Employee Benefits				
210 Group Insurance – Contracted Provider		18.80		18.80
220 Social Security Contributions		2,716.26		2,716.26
230 PSERS Retirement Contributions		11,776.84		11,776.84
250 Unemployment Compensation		8.84		8.84
260 Workers' Compensation		301.84		301.84
270 Group Insurance – Self-Insurance		8,544.94		8,544.94
Total Personnel Services – Employee Benefits		\$23,367.52		\$23,367.52
300 Purchased Professional and Technical Services				
390 Other Purchased Professional and Technical Services		3,800.00		3,800.00
Total Purchased Professional and Technical Services		\$3,800.00		\$3,800.00
Total 1410 Drivers' Education		\$63,326.39		\$63,326.39

General Fund (10)

	<u>Elementary</u>	<u>Secondary</u>	<u>Federal</u>	<u>Total</u>
1430 Homebound Instruction				
100 Personnel Services – Salaries				
100 Personnel Services – Salaries	153.00	3,578.50		3,731.50
Total Personnel Services – Salaries	\$153.00	\$3,578.50		\$3,731.50
200 Personnel Services – Employee Benefits				
220 Social Security Contributions	11.41	269.55		280.96
230 PSERS Retirement Contributions	49.84	1,165.52		1,215.36
250 Unemployment Compensation		0.29		0.29
260 Workers' Compensation	1.27	29.87		31.14
Total Personnel Services – Employee Benefits	\$62.52	\$1,465.23		\$1,527.75
500 Other Purchased Services				
580 Travel	10.36	10.35		20.71
Total Other Purchased Services	\$10.36	\$10.35		\$20.71
Total 1430 Homebound Instruction	\$225.88	\$5,054.08		\$5,279.96

General Fund (10)

	<u>Elementary</u>	<u>Secondary</u>	<u>Federal</u>	<u>Total</u>
1440 Alternative Regular Education Programs				
300 <u>Purchased Professional and Technical Services</u>				
322 Professional Educational Services – Ius		18,868.19		18,868.19
329 Professional Educational Services – Other		1,709.77		1,709.77
390 Other Purchased Professional and Technical Services	16,560.00	117,300.00		133,860.00
Total Purchased Professional and Technical Services	\$16,560.00	\$137,877.96		\$154,437.96
500 <u>Other Purchased Services</u>				
561 Tuition To Other School Districts Within the State	25,896.00	48,127.03		74,023.03
564 Tuition To Career and Technology Centers		48,972.00		48,972.00
Total Other Purchased Services	\$25,896.00	\$97,099.03		\$122,995.03
Total 1440 Alternative Regular Education Programs	\$42,456.00	\$234,976.99		\$277,432.99

General Fund (10)

	<u>Elementary</u>	<u>Secondary</u>	<u>Federal</u>	<u>Total</u>
1442 Alternative Education Programs				
300 <u>Purchased Professional and Technical Services</u>				
322 Professional Educational Services – Ius		18,868.19		18,868.19
329 Professional Educational Services – Other		1,709.77		1,709.77
390 Other Purchased Professional and Technical Services	16,560.00	117,300.00		133,860.00
Total Purchased Professional and Technical Services	\$16,560.00	\$137,877.96		\$154,437.96
500 <u>Other Purchased Services</u>				
561 Tuition To Other School Districts Within the State	25,896.00	48,127.03		74,023.03
564 Tuition To Career and Technology Centers		48,972.00		48,972.00
Total Other Purchased Services	\$25,896.00	\$97,099.03		\$122,995.03
Total 1442 Alternative Education Programs	\$42,456.00	\$234,976.99		\$277,432.99

General Fund (10)

2000 Support Services

Total

100 Personnel Services – Salaries

100 Personnel Services – Salaries 4,838,074.50

Total Personnel Services – Salaries \$4,838,074.50

200 Personnel Services – Employee Benefits

210 Group Insurance – Contracted Provider 3,732.37

220 Social Security Contributions 366,260.68

230 PSERS Retirement Contributions 1,549,609.44

240 Tuition Reimbursement 119,089.82

250 Unemployment Compensation 2,455.72

260 Workers' Compensation 40,507.27

270 Group Insurance – Self-Insurance 883,456.69

Total Personnel Services – Employee Benefits \$2,965,111.99

300 Purchased Professional and Technical Services

310 Official / Administrative Services 92,015.91

329 Professional Educational Services – Other 4,019.87

330 Other Professional Services 112,143.01

340 Technical Services 19,144.17

350 Security / Safety Services 49,430.73

Total Purchased Professional and Technical Services \$276,753.69

400 Purchased Property Services

410 Cleaning Services 22,769.09

420 Utility Services 497,060.27

430 Repairs and Maintenance Services 147,924.74

Total Purchased Property Services \$667,754.10

500 Other Purchased Services

516 Student Transportation Services From the IU 15,143.74

520 Insurance – General 33,625.00

522 Automotive Liability Insurance 47,361.00

523 General Property and Liability Insurance 71,203.00

530 Communications 71,940.10

541 Advertising Related to Federal Grant Awards 6,970.66

580 Travel 48,842.18

595 IU Payments By Withholding 52,230.65

599 Other Miscellaneous Purchased Services 4,960.98

Total Other Purchased Services \$352,277.31

600 Supplies

610 General Supplies 532,439.21

620 Energy 169,700.30

630 Food (375.00)

640 Books and Periodicals 65,888.49

Total Supplies \$767,653.00

700 Property

752 Capital Equipment – Original and Additional 338.03

General Fund (10)

2000 Support Services

Total

700 Property

756 Capitalized Technology Hardware and Equipment– Original

9,133.26

766 Capitalized Technology Hardware and Equipment– Replacement

13,285.39

Total Property

\$22,756.68

800 Other Objects

810 Dues and Fees

22,538.88

Total Other Objects

\$22,538.88

Total 2000 Support Services

\$9,912,920.15

General Fund (10)

	<u>Elementary</u>	<u>Secondary</u>	<u>Federal</u>	<u>Total</u>
2100 Support Services – Students				
100 Personnel Services – Salaries				
100 Personnel Services – Salaries	106,130.13	336,779.83		619,113.96
Total Personnel Services – Salaries	\$106,130.13	\$336,779.83		\$619,113.96
200 Personnel Services – Employee Benefits				
210 Group Insurance – Contracted Provider	95.40	229.80		432.78
220 Social Security Contributions	7,997.11	25,235.22		46,253.54
230 PSERS Retirement Contributions	34,566.72	109,689.21		201,645.83
250 Unemployment Compensation	26.52	95.35		178.46
260 Workers' Compensation	886.08	2,811.68		5,168.93
270 Group Insurance – Self-Insurance	18,874.48	76,826.10		134,321.41
Total Personnel Services – Employee Benefits	\$62,446.31	\$214,887.36		\$388,000.95
300 Purchased Professional and Technical Services				
330 Other Professional Services		3,000.00		3,000.00
Total Purchased Professional and Technical Services		\$3,000.00		\$3,000.00
500 Other Purchased Services				
580 Travel	515.91	2,310.63		2,826.54
Total Other Purchased Services	\$515.91	\$2,310.63		\$2,826.54
600 Supplies				
610 General Supplies	3,068.28	6,083.58		23,094.36
Total Supplies	\$3,068.28	\$6,083.58		\$23,094.36
800 Other Objects				
810 Dues and Fees	359.00			359.00
Total Other Objects	\$359.00			\$359.00
Total 2100 Support Services – Students	\$172,519.63	\$563,061.40		\$1,036,394.81

General Fund (10)

	<u>Elementary</u>	<u>Secondary</u>	<u>Federal</u>	<u>Total</u>
2120 Guidance Services				
100 Personnel Services – Salaries				
100 Personnel Services – Salaries	71,130.00	301,779.96		372,909.96
Total Personnel Services – Salaries	\$71,130.00	\$301,779.96		\$372,909.96
200 Personnel Services – Employee Benefits				
210 Group Insurance – Contracted Provider	37.60	172.00		209.60
220 Social Security Contributions	5,341.99	22,580.37		27,922.36
230 PSERS Retirement Contributions	23,167.03	98,289.78		121,456.81
250 Unemployment Compensation	17.68	86.51		104.19
260 Workers' Compensation	593.84	2,519.45		3,113.29
270 Group Insurance – Self-Insurance	15,330.18	73,281.90		88,612.08
Total Personnel Services – Employee Benefits	\$44,488.32	\$196,930.01		\$241,418.33
300 Purchased Professional and Technical Services				
330 Other Professional Services		3,000.00		3,000.00
Total Purchased Professional and Technical Services		\$3,000.00		\$3,000.00
500 Other Purchased Services				
580 Travel	87.50	1,670.32		1,757.82
Total Other Purchased Services	\$87.50	\$1,670.32		\$1,757.82
600 Supplies				
610 General Supplies	1,503.55	4,918.09		6,421.64
Total Supplies	\$1,503.55	\$4,918.09		\$6,421.64
Total 2120 Guidance Services	\$117,209.37	\$508,298.38		\$625,507.75

General Fund (10)

	<u>Elementary</u>	<u>Secondary</u>	<u>Federal</u>	<u>Total</u>
2140 Psychological Services				
100 Personnel Services – Salaries				
100 Personnel Services – Salaries	35,000.13	34,999.87		70,000.00
Total Personnel Services – Salaries	\$35,000.13	\$34,999.87		\$70,000.00
200 Personnel Services – Employee Benefits				
210 Group Insurance – Contracted Provider	57.80	57.80		115.60
220 Social Security Contributions	2,655.12	2,654.85		5,309.97
230 PSERS Retirement Contributions	11,399.69	11,399.43		22,799.12
250 Unemployment Compensation	8.84	8.84		17.68
260 Workers' Compensation	292.24	292.23		584.47
270 Group Insurance – Self-Insurance	3,544.30	3,544.20		7,088.50
Total Personnel Services – Employee Benefits	\$17,957.99	\$17,957.35		\$35,915.34
500 Other Purchased Services				
580 Travel	428.41	640.31		1,068.72
Total Other Purchased Services	\$428.41	\$640.31		\$1,068.72
600 Supplies				
610 General Supplies	1,564.73	1,165.49		2,730.22
Total Supplies	\$1,564.73	\$1,165.49		\$2,730.22
800 Other Objects				
810 Dues and Fees	359.00			359.00
Total Other Objects	\$359.00			\$359.00
Total 2140 Psychological Services	\$55,310.26	\$54,763.02		\$110,073.28

LEA : 105253903 General McLane SD

Printed 10/31/2018 9:51:07 AM

General Fund (10)

2160 Social Work Services

Elementary

Secondary

Federal

Total

100 Personnel Services – Salaries

100 Personnel Services – Salaries

109,314.00

Total Personnel Services – Salaries

\$109,314.00

200 Personnel Services – Employee Benefits

210 Group Insurance – Contracted Provider

75.20

220 Social Security Contributions

8,095.71

230 PSERS Retirement Contributions

35,603.69

250 Unemployment Compensation

35.36

260 Workers' Compensation

912.68

270 Group Insurance – Self-Insurance

17,872.54

Total Personnel Services – Employee Benefits

\$62,595.18

Total 2160 Social Work Services

\$171,909.18

General Fund (10)

2170 Student Accounting Services

Elementary Secondary Federal Total

100 Personnel Services – Salaries

100 Personnel Services – Salaries 66,890.00

Total Personnel Services – Salaries \$66,890.00

200 Personnel Services – Employee Benefits

210 Group Insurance – Contracted Provider 32.38

220 Social Security Contributions 4,925.50

230 PSERS Retirement Contributions 21,786.21

250 Unemployment Compensation 21.23

260 Workers' Compensation 558.49

270 Group Insurance – Self-Insurance 20,748.29

Total Personnel Services – Employee Benefits \$48,072.10

600 Supplies

610 General Supplies 13,942.50

Total Supplies \$13,942.50

Total 2170 Student Accounting Services \$128,904.60

LEA : 105253903 General McLane SD

Printed 10/31/2018 9:51:07 AM

General Fund (10)

2200 Support Services – Instructional Staff

	<u>Elementary</u>	<u>Secondary</u>	<u>Federal</u>	<u>Total</u>
100 Personnel Services – Salaries				
100 Personnel Services – Salaries	332,347.07	266,594.91		598,941.98
Total Personnel Services – Salaries	\$332,347.07	\$266,594.91		\$598,941.98
200 Personnel Services – Employee Benefits				
210 Group Insurance – Contracted Provider	204.27	180.02		384.29
220 Social Security Contributions	24,419.22	19,644.43		44,063.65
230 PSERS Retirement Contributions	107,845.28	86,255.70		194,100.98
240 Tuition Reimbursement	58,305.41	60,784.41		119,089.82
250 Unemployment Compensation	145.50	108.38		253.88
260 Workers' Compensation	2,774.59	2,225.31		4,999.90
270 Group Insurance – Self-Insurance	74,117.36	59,112.77		133,230.13
Total Personnel Services – Employee Benefits	\$267,811.63	\$228,311.02		\$496,122.65
300 Purchased Professional and Technical Services				
329 Professional Educational Services – Other	1,145.59	2,874.28		4,019.87
340 Technical Services	707.50	502.50		1,210.00
Total Purchased Professional and Technical Services	\$1,853.09	\$3,376.78		\$5,229.87
400 Purchased Property Services				
430 Repairs and Maintenance Services	19,344.23	20,473.80		39,818.03
Total Purchased Property Services	\$19,344.23	\$20,473.80		\$39,818.03
500 Other Purchased Services				
580 Travel	10,539.95	16,665.00		27,204.95
Total Other Purchased Services	\$10,539.95	\$16,665.00		\$27,204.95
600 Supplies				
610 General Supplies	54,844.99	56,322.96		111,167.95
640 Books and Periodicals	43,207.96	22,680.53		65,888.49
Total Supplies	\$98,052.95	\$79,003.49		\$177,056.44
700 Property				
756 Capitalized Technology Hardware and Equipment – Original		3,606.06		3,606.06
766 Capitalized Technology Hardware and Equipment – Replacement	8,341.69	4,943.70		13,285.39
Total Property	\$8,341.69	\$8,549.76		\$16,891.45
800 Other Objects				
810 Dues and Fees	245.00	310.00		555.00
Total Other Objects	\$245.00	\$310.00		\$555.00
Total 2200 Support Services – Instructional Staff	\$738,535.61	\$623,284.76		\$1,361,820.37

General Fund (10)

2220 Technology Support Services

	<u>Elementary</u>	<u>Secondary</u>	<u>Federal</u>	<u>Total</u>
100 Personnel Services – Salaries				
100 Personnel Services – Salaries	87,113.40	87,113.24		174,226.64
Total Personnel Services – Salaries	\$87,113.40	\$87,113.24		\$174,226.64
200 Personnel Services – Employee Benefits				
210 Group Insurance – Contracted Provider	50.17	50.17		100.34
220 Social Security Contributions	6,250.56	6,249.53		12,500.09
230 PSERS Retirement Contributions	28,372.92	28,372.73		56,745.65
250 Unemployment Compensation	35.82	35.81		71.63
260 Workers' Compensation	727.27	727.05		1,454.32
270 Group Insurance – Self-Insurance	26,743.42	26,742.95		53,486.37
Total Personnel Services – Employee Benefits	\$62,180.16	\$62,178.24		\$124,358.40
400 Purchased Property Services				
430 Repairs and Maintenance Services	19,344.23	20,473.80		39,818.03
Total Purchased Property Services	\$19,344.23	\$20,473.80		\$39,818.03
500 Other Purchased Services				
580 Travel	5,284.00	5,234.87		10,518.87
Total Other Purchased Services	\$5,284.00	\$5,234.87		\$10,518.87
600 Supplies				
610 General Supplies	41,581.72	43,099.89		84,681.61
Total Supplies	\$41,581.72	\$43,099.89		\$84,681.61
700 Property				
766 Capitalized Technology Hardware and Equipment – Replacement	8,341.69	4,943.70		13,285.39
Total Property	\$8,341.69	\$4,943.70		\$13,285.39
Total 2220 Technology Support Services	\$223,845.20	\$223,043.74		\$446,888.94

General Fund (10)

2250 School Library Services

	<u>Elementary</u>	<u>Secondary</u>	<u>Federal</u>	<u>Total</u>
100 Personnel Services – Salaries				
100 Personnel Services – Salaries	164,857.17	117,555.17		282,412.34
Total Personnel Services – Salaries	\$164,857.17	\$117,555.17		\$282,412.34
200 Personnel Services – Employee Benefits				
210 Group Insurance – Contracted Provider	96.30	72.05		168.35
220 Social Security Contributions	12,161.48	8,799.32		20,960.80
230 PSERS Retirement Contributions	53,694.23	38,287.73		91,981.96
250 Unemployment Compensation	51.86	44.80		96.66
260 Workers' Compensation	1,376.10	981.19		2,357.29
270 Group Insurance – Self-Insurance	38,828.90	23,824.88		62,653.78
Total Personnel Services – Employee Benefits	\$106,208.87	\$72,009.97		\$178,218.84
300 Purchased Professional and Technical Services				
340 Technical Services	707.50	502.50		1,210.00
Total Purchased Professional and Technical Services	\$707.50	\$502.50		\$1,210.00
600 Supplies				
610 General Supplies	3,813.27	2,510.43		6,323.70
640 Books and Periodicals	43,207.96	22,680.53		65,888.49
Total Supplies	\$47,021.23	\$25,190.96		\$72,212.19
700 Property				
756 Capitalized Technology Hardware and Equipment – Original		3,606.06		3,606.06
Total Property		\$3,606.06		\$3,606.06
Total 2250 School Library Services	\$318,794.77	\$218,864.66		\$537,659.43

General Fund (10)

	<u>Elementary</u>	<u>Secondary</u>	<u>Federal</u>	<u>Total</u>
2260 Instruction and Curriculum Development Services				
100 Personnel Services – Salaries				
100 Personnel Services – Salaries	50,713.00	50,713.00		101,426.00
Total Personnel Services – Salaries	\$50,713.00	\$50,713.00		\$101,426.00
200 Personnel Services – Employee Benefits				
210 Group Insurance – Contracted Provider	57.80	57.80		115.60
220 Social Security Contributions	3,737.76	3,737.51		7,475.27
230 PSERS Retirement Contributions	16,517.28	16,517.28		33,034.56
250 Unemployment Compensation	8.84	8.84		17.68
260 Workers' Compensation	423.46	423.26		846.72
270 Group Insurance – Self-Insurance	8,545.04	8,544.94		17,089.98
Total Personnel Services – Employee Benefits	\$29,290.18	\$29,289.63		\$58,579.81
500 Other Purchased Services				
580 Travel	846.16	846.16		1,692.32
Total Other Purchased Services	\$846.16	\$846.16		\$1,692.32
600 Supplies				
610 General Supplies	4,450.00	4,600.00		9,050.00
Total Supplies	\$4,450.00	\$4,600.00		\$9,050.00
800 Other Objects				
810 Dues and Fees	245.00	245.00		490.00
Total Other Objects	\$245.00	\$245.00		\$490.00
Total 2260 Instruction and Curriculum Development Services	\$85,544.34	\$85,693.79		\$171,238.13

General Fund (10)

2270 Instructional Staff Professional Development Services	<u>Elementary</u>	<u>Secondary</u>	<u>Federal</u>	<u>Total</u>
100 Personnel Services – Salaries				
100 Personnel Services – Salaries	29,663.50	11,213.50		40,877.00
Total Personnel Services – Salaries	\$29,663.50	\$11,213.50		\$40,877.00
200 Personnel Services – Employee Benefits				
220 Social Security Contributions	2,269.42	858.07		3,127.49
230 PSERS Retirement Contributions	9,260.85	3,077.96		12,338.81
240 Tuition Reimbursement	58,305.41	60,784.41		119,089.82
250 Unemployment Compensation	48.98	18.93		67.91
260 Workers' Compensation	247.76	93.81		341.57
Total Personnel Services – Employee Benefits	\$70,132.42	\$64,833.18		\$134,965.60
300 Purchased Professional and Technical Services				
329 Professional Educational Services – Other	1,145.59	2,874.28		4,019.87
Total Purchased Professional and Technical Services	\$1,145.59	\$2,874.28		\$4,019.87
500 Other Purchased Services				
580 Travel	4,409.79	10,583.97		14,993.76
Total Other Purchased Services	\$4,409.79	\$10,583.97		\$14,993.76
600 Supplies				
610 General Supplies	5,000.00	6,112.64		11,112.64
Total Supplies	\$5,000.00	\$6,112.64		\$11,112.64
800 Other Objects				
810 Dues and Fees		65.00		65.00
Total Other Objects		\$65.00		\$65.00
Total 2270 Instructional Staff Professional Development Services	\$110,351.30	\$95,682.57		\$206,033.87

General Fund (10)

	<u>Elementary</u>	<u>Secondary</u>	<u>Federal</u>	<u>Total</u>
2300 Support Services – Administration				
100 Personnel Services – Salaries				
100 Personnel Services – Salaries	464,140.07	383,654.60		1,079,789.67
Total Personnel Services – Salaries	\$464,140.07	\$383,654.60		\$1,079,789.67
200 Personnel Services – Employee Benefits				
210 Group Insurance – Contracted Provider	495.50	419.09		1,219.28
220 Social Security Contributions	34,833.74	28,796.89		85,089.45
230 PSERS Retirement Contributions	147,366.53	124,300.45		345,427.21
250 Unemployment Compensation	250.76	169.41		490.64
260 Workers' Compensation	3,875.27	3,202.55		9,001.96
270 Group Insurance – Self-Insurance	58,028.17	46,837.69		138,193.48
Total Personnel Services – Employee Benefits	\$244,849.97	\$203,726.08		\$579,422.02
300 Purchased Professional and Technical Services				
310 Official / Administrative Services				92,015.91
330 Other Professional Services				109,074.01
340 Technical Services				11,228.99
Total Purchased Professional and Technical Services				\$212,318.91
500 Other Purchased Services				
520 Insurance – General				33,625.00
530 Communications	4,111.63	5,578.93		9,690.56
580 Travel	3,621.66	2,224.00		14,809.34
Total Other Purchased Services	\$7,733.29	\$7,802.93		\$58,124.90
600 Supplies				
610 General Supplies	16,589.25	19,588.26		59,084.25
630 Food	(234.38)	(140.62)		(375.00)
Total Supplies	\$16,354.87	\$19,447.64		\$58,709.25
700 Property				
756 Capitalized Technology Hardware and Equipment – Original	2,763.60	2,763.60		5,527.20
Total Property	\$2,763.60	\$2,763.60		\$5,527.20
800 Other Objects				
810 Dues and Fees	2,024.00	2,507.00		20,960.16
Total Other Objects	\$2,024.00	\$2,507.00		\$20,960.16
Total 2300 Support Services – Administration	\$737,865.80	\$619,901.85		\$2,014,852.11

General Fund (10)

2310 Board Services

	<u>Elementary</u>	<u>Secondary</u>	<u>Federal</u>	<u>Total</u>
100 Personnel Services – Salaries				
100 Personnel Services – Salaries				1,291.47
Total Personnel Services – Salaries				\$1,291.47
200 Personnel Services – Employee Benefits				
210 Group Insurance – Contracted Provider				0.66
220 Social Security Contributions				97.36
230 PSERS Retirement Contributions				420.73
250 Unemployment Compensation				0.40
260 Workers' Compensation				10.72
270 Group Insurance – Self-Insurance				182.32
Total Personnel Services – Employee Benefits				\$712.19
300 Purchased Professional and Technical Services				
310 Official / Administrative Services				2,770.00
330 Other Professional Services				5,457.83
340 Technical Services				2,543.41
Total Purchased Professional and Technical Services				\$10,771.24
500 Other Purchased Services				
520 Insurance – General				26,918.00
580 Travel				22.00
Total Other Purchased Services				\$26,940.00
600 Supplies				
610 General Supplies				2,818.59
Total Supplies				\$2,818.59
800 Other Objects				
810 Dues and Fees				11,836.71
Total Other Objects				\$11,836.71
Total 2310 Board Services				\$54,370.20

General Fund (10)

	<u>Elementary</u>	<u>Secondary</u>	<u>Federal</u>	<u>Total</u>
2330 Tax Assessment and Collection Services				
200 Personnel Services – Employee Benefits				
220 Social Security Contributions				4,841.45
Total Personnel Services – Employee Benefits				\$4,841.45
300 Purchased Professional and Technical Services				
310 Official / Administrative Services				89,245.91
340 Technical Services				6,142.17
Total Purchased Professional and Technical Services				\$95,388.08
500 Other Purchased Services				
520 Insurance – General				6,707.00
Total Other Purchased Services				\$6,707.00
600 Supplies				
610 General Supplies				3,571.53
Total Supplies				\$3,571.53
Total 2330 Tax Assessment and Collection Services				\$110,508.06

General Fund (10)

2350 Legal and Accounting Services

Elementary

Secondary

Federal

Total

300 Purchased Professional and Technical Services

330 Other Professional Services

103,616.18

Total Purchased Professional and Technical Services

\$103,616.18

Total 2350 Legal and Accounting Services

\$103,616.18

General Fund (10)

	<u>Elementary</u>	<u>Secondary</u>	<u>Federal</u>	<u>Total</u>
2360 Office of the Superintendent / Executive Director Services				
100 Personnel Services – Salaries				
100 Personnel Services – Salaries				230,703.53
Total Personnel Services – Salaries				\$230,703.53
200 Personnel Services – Employee Benefits				
210 Group Insurance – Contracted Provider				304.03
220 Social Security Contributions				16,520.01
230 PSERS Retirement Contributions				73,339.50
250 Unemployment Compensation				70.07
260 Workers' Compensation				1,913.42
270 Group Insurance – Self-Insurance				33,145.30
Total Personnel Services – Employee Benefits				\$125,292.33
300 Purchased Professional and Technical Services				
340 Technical Services				2,543.41
Total Purchased Professional and Technical Services				\$2,543.41
500 Other Purchased Services				
580 Travel				8,941.68
Total Other Purchased Services				\$8,941.68
600 Supplies				
610 General Supplies				16,516.62
Total Supplies				\$16,516.62
800 Other Objects				
810 Dues and Fees				4,592.45
Total Other Objects				\$4,592.45
Total 2360 Office of the Superintendent / Executive Director Services				\$388,590.02

LEA : 105253903 General McLane SD

Printed 10/31/2018 9:51:07 AM

General Fund (10)

	<u>Elementary</u>	<u>Secondary</u>	<u>Federal</u>	<u>Total</u>
2380 Office of the Principal Services				
100 Personnel Services – Salaries				
100 Personnel Services – Salaries	464,140.07	383,654.60		847,794.67
Total Personnel Services – Salaries	\$464,140.07	\$383,654.60		\$847,794.67
200 Personnel Services – Employee Benefits				
210 Group Insurance – Contracted Provider	495.50	419.09		914.59
220 Social Security Contributions	34,833.74	28,796.89		63,630.63
230 PSERS Retirement Contributions	147,366.53	124,300.45		271,666.98
250 Unemployment Compensation	250.76	169.41		420.17
260 Workers' Compensation	3,875.27	3,202.55		7,077.82
270 Group Insurance – Self-Insurance	58,028.17	46,837.69		104,865.86
Total Personnel Services – Employee Benefits	\$244,849.97	\$203,726.08		\$448,576.05
500 Other Purchased Services				
530 Communications	4,111.63	5,578.93		9,690.56
580 Travel	3,621.66	2,224.00		5,845.66
Total Other Purchased Services	\$7,733.29	\$7,802.93		\$15,536.22
600 Supplies				
610 General Supplies	16,589.25	19,588.26		36,177.51
630 Food	(234.38)	(140.62)		(375.00)
Total Supplies	\$16,354.87	\$19,447.64		\$35,802.51
700 Property				
756 Capitalized Technology Hardware and Equipment – Original	2,763.60	2,763.60		5,527.20
Total Property	\$2,763.60	\$2,763.60		\$5,527.20
800 Other Objects				
810 Dues and Fees	2,024.00	2,507.00		4,531.00
Total Other Objects	\$2,024.00	\$2,507.00		\$4,531.00
Total 2380 Office of the Principal Services	\$737,865.80	\$619,901.85		\$1,357,767.65

General Fund (10)

	<u>Elementary</u>	<u>Secondary</u>	<u>Federal</u>	<u>Total</u>
2400 Support Services – Pupil Health				
100 Personnel Services – Salaries				
100 Personnel Services – Salaries				265,534.00
Total Personnel Services – Salaries				\$265,534.00
200 Personnel Services – Employee Benefits				
210 Group Insurance – Contracted Provider				150.40
220 Social Security Contributions				19,671.84
230 PSERS Retirement Contributions				86,484.57
250 Unemployment Compensation				70.28
260 Workers' Compensation				2,216.76
270 Group Insurance – Self-Insurance				66,600.09
Total Personnel Services – Employee Benefits				\$175,193.94
300 Purchased Professional and Technical Services				
330 Other Professional Services				69.00
Total Purchased Professional and Technical Services				\$69.00
600 Supplies				
610 General Supplies				8,426.44
Total Supplies				\$8,426.44
Total 2400 Support Services – Pupil Health				\$449,223.38

General Fund (10)

2440 Nursing Services

100 Personnel Services – Salaries

	<u>Elementary</u>	<u>Secondary</u>	<u>Federal</u>	<u>Total</u>
100 Personnel Services – Salaries				265,534.00
Total Personnel Services – Salaries				\$265,534.00

200 Personnel Services – Employee Benefits

210 Group Insurance – Contracted Provider				150.40
220 Social Security Contributions				19,671.84
230 PSERS Retirement Contributions				86,484.57
250 Unemployment Compensation				70.28
260 Workers' Compensation				2,216.76
270 Group Insurance – Self-Insurance				66,600.09
Total Personnel Services – Employee Benefits				\$175,193.94

300 Purchased Professional and Technical Services

330 Other Professional Services				69.00
Total Purchased Professional and Technical Services				\$69.00

600 Supplies

610 General Supplies				8,426.44
Total Supplies				\$8,426.44
Total 2440 Nursing Services				\$449,223.38

General Fund (10)

	<u>Elementary</u>	<u>Secondary</u>	<u>Federal</u>	<u>Total</u>
2500 Support Services – Business				
100 Personnel Services – Salaries				
100 Personnel Services – Salaries				228,770.83
Total Personnel Services – Salaries				\$228,770.83
200 Personnel Services – Employee Benefits				
210 Group Insurance – Contracted Provider				182.17
220 Social Security Contributions				17,086.17
230 PSERS Retirement Contributions				70,110.60
250 Unemployment Compensation				86.50
260 Workers' Compensation				1,909.81
270 Group Insurance – Self-Insurance				45,505.18
Total Personnel Services – Employee Benefits				\$134,880.43
300 Purchased Professional and Technical Services				
340 Technical Services				2,596.08
Total Purchased Professional and Technical Services				\$2,596.08
500 Other Purchased Services				
530 Communications				5,107.84
541 Advertising Related to Federal Grant Awards				6,970.66
580 Travel				443.02
Total Other Purchased Services				\$12,521.52
600 Supplies				
610 General Supplies				16,851.86
Total Supplies				\$16,851.86
800 Other Objects				
810 Dues and Fees				80.00
Total Other Objects				\$80.00
Total 2500 Support Services – Business				\$395,700.72

General Fund (10)

	<u>Elementary</u>	<u>Secondary</u>	<u>Federal</u>	<u>Total</u>
2510 Fiscal Services				
100 Personnel Services – Salaries				
100 Personnel Services – Salaries				228,770.83
Total Personnel Services – Salaries				\$228,770.83
200 Personnel Services – Employee Benefits				
210 Group Insurance – Contracted Provider				182.17
220 Social Security Contributions				17,086.17
230 PSERS Retirement Contributions				70,110.60
250 Unemployment Compensation				86.50
260 Workers' Compensation				1,909.81
270 Group Insurance – Self-Insurance				45,505.18
Total Personnel Services – Employee Benefits				\$134,880.43
300 Purchased Professional and Technical Services				
340 Technical Services				2,596.08
Total Purchased Professional and Technical Services				\$2,596.08
500 Other Purchased Services				
530 Communications				5,107.84
541 Advertising Related to Federal Grant Awards				6,970.66
580 Travel				443.02
Total Other Purchased Services				\$12,521.52
600 Supplies				
610 General Supplies				16,851.86
Total Supplies				\$16,851.86
800 Other Objects				
810 Dues and Fees				80.00
Total Other Objects				\$80.00
Total 2510 Fiscal Services				\$395,700.72

General Fund (10)

	<u>Elementary</u>	<u>Secondary</u>	<u>Federal</u>	<u>Total</u>
2511 Supervision of Fiscal Services - Head of Component				
100 <u>Personnel Services – Salaries</u>				
100 Personnel Services – Salaries				149,076.14
Total Personnel Services – Salaries				\$149,076.14
200 <u>Personnel Services – Employee Benefits</u>				
210 Group Insurance – Contracted Provider				137.19
220 Social Security Contributions				11,095.94
230 PSERS Retirement Contributions				47,233.04
250 Unemployment Compensation				35.37
260 Workers' Compensation				1,244.51
270 Group Insurance – Self-Insurance				30,696.21
Total Personnel Services – Employee Benefits				\$90,442.26
300 <u>Purchased Professional and Technical Services</u>				
340 Technical Services				2,596.08
Total Purchased Professional and Technical Services				\$2,596.08
500 <u>Other Purchased Services</u>				
530 Communications				5,107.84
541 Advertising Related to Federal Grant Awards				6,970.66
580 Travel				443.02
Total Other Purchased Services				\$12,521.52
600 <u>Supplies</u>				
610 General Supplies				16,851.86
Total Supplies				\$16,851.86
800 <u>Other Objects</u>				
810 Dues and Fees				80.00
Total Other Objects				\$80.00
Total 2511 Supervision of Fiscal Services - Head of Component				\$271,567.86

General Fund (10)

2513 Receiving and Disbursing Funds Services

Elementary

Secondary

Federal

Total

100 Personnel Services – Salaries

100 Personnel Services – Salaries

32,566.04

Total Personnel Services – Salaries

\$32,566.04

200 Personnel Services – Employee Benefits

210 Group Insurance – Contracted Provider

21.59

220 Social Security Contributions

2,411.82

230 PSERS Retirement Contributions

10,606.70

250 Unemployment Compensation

17.69

260 Workers' Compensation

271.91

270 Group Insurance – Self-Insurance

10,701.77

Total Personnel Services – Employee Benefits

\$24,031.48

Total 2513 Receiving and Disbursing Funds Services

\$56,597.52

General Fund (10)

2514 Payroll Services

100 Personnel Services – Salaries

100 Personnel Services – Salaries 47,128.65

Total Personnel Services – Salaries \$47,128.65

200 Personnel Services – Employee Benefits

210 Group Insurance – Contracted Provider 23.39

220 Social Security Contributions 3,578.41

230 PSERS Retirement Contributions 12,270.86

250 Unemployment Compensation 33.44

260 Workers' Compensation 393.39

270 Group Insurance – Self-Insurance 4,107.20

Total Personnel Services – Employee Benefits \$20,406.69

Total 2514 Payroll Services \$67,535.34

Elementary

Secondary

Federal

Total

General Fund (10)

	<u>Elementary</u>	<u>Secondary</u>	<u>Federal</u>	<u>Total</u>
2600 Operation and Maintenance of Plant Services				
100 Personnel Services – Salaries				
100 Personnel Services – Salaries				1,044,170.93
Total Personnel Services – Salaries				\$1,044,170.93
200 Personnel Services – Employee Benefits				
210 Group Insurance – Contracted Provider				673.17
220 Social Security Contributions				77,763.06
230 PSERS Retirement Contributions				332,123.26
250 Unemployment Compensation				628.15
260 Workers' Compensation				8,717.01
270 Group Insurance – Self-Insurance				263,019.10
Total Personnel Services – Employee Benefits				\$682,923.75
300 Purchased Professional and Technical Services				
350 Security / Safety Services				49,430.73
Total Purchased Professional and Technical Services				\$49,430.73
400 Purchased Property Services				
410 Cleaning Services				18,158.59
420 Utility Services				483,183.09
430 Repairs and Maintenance Services				108,106.71
Total Purchased Property Services				\$609,448.39
500 Other Purchased Services				
523 General Property and Liability Insurance				71,203.00
530 Communications				56,691.55
580 Travel				2,677.68
Total Other Purchased Services				\$130,572.23
600 Supplies				
610 General Supplies	103,856.89	133,779.30		237,636.19
Total Supplies	\$103,856.89	\$133,779.30		\$237,636.19
700 Property				
752 Capital Equipment – Original and Additional				338.03
Total Property				\$338.03
800 Other Objects				
810 Dues and Fees				288.49
Total Other Objects				\$288.49
Total 2600 Operation and Maintenance of Plant Services	\$103,856.89	\$133,779.30		\$2,754,808.74

General Fund (10)

	<u>Elementary</u>	<u>Secondary</u>	<u>Federal</u>	<u>Total</u>
2610 Supervision of Operation and Maintenance of Plant Services				
100 Personnel Services – Salaries				
100 Personnel Services – Salaries				78,008.00
Total Personnel Services – Salaries				\$78,008.00
200 Personnel Services – Employee Benefits				
210 Group Insurance – Contracted Provider				98.88
220 Social Security Contributions				5,898.36
230 PSERS Retirement Contributions				25,407.18
250 Unemployment Compensation				17.68
260 Workers' Compensation				651.17
270 Group Insurance – Self-Insurance				15,330.18
Total Personnel Services – Employee Benefits				\$47,403.45
Total 2610 Supervision of Operation and Maintenance of Plant Services				\$125,411.45

General Fund (10)

	<u>Elementary</u>	<u>Secondary</u>	<u>Federal</u>	<u>Total</u>
2611 Supervision of Operation and Maintenance of Plant Services – Head of Component				
100 Personnel Services – Salaries				
100 Personnel Services – Salaries				58,505.94
Total Personnel Services – Salaries				\$58,505.94
200 Personnel Services – Employee Benefits				
210 Group Insurance – Contracted Provider				74.16
220 Social Security Contributions				4,423.65
230 PSERS Retirement Contributions				19,055.39
250 Unemployment Compensation				13.26
260 Workers' Compensation				488.38
270 Group Insurance – Self-Insurance				11,497.67
Total Personnel Services – Employee Benefits				\$35,552.51
Total 2611 Supervision of Operation and Maintenance of Plant Services – Head of Component				\$94,058.45

General Fund (10)

2619 Supervision of Operation and Maintenance of Plant Services – All Other Supervision

Elementary

Secondary

Federal

Total

100 Personnel Services – Salaries

100 Personnel Services – Salaries

19,502.06

Total Personnel Services – Salaries

\$19,502.06

200 Personnel Services – Employee Benefits

210 Group Insurance – Contracted Provider

24.72

220 Social Security Contributions

1,474.71

230 PSERS Retirement Contributions

6,351.79

250 Unemployment Compensation

4.42

260 Workers' Compensation

162.79

270 Group Insurance – Self-Insurance

3,832.51

Total Personnel Services – Employee Benefits

\$11,850.94

Total 2619 Supervision of Operation and Maintenance of Plant Services – All Other Supervision

\$31,353.00

General Fund (10)

	<u>Elementary</u>	<u>Secondary</u>	<u>Federal</u>	<u>Total</u>
2620 Operation of Buildings Services				
100 Personnel Services – Salaries				
100 Personnel Services – Salaries				919,821.17
Total Personnel Services – Salaries				\$919,821.17
200 Personnel Services – Employee Benefits				
210 Group Insurance – Contracted Provider				552.70
220 Social Security Contributions				68,369.27
230 PSERS Retirement Contributions				291,622.53
250 Unemployment Compensation				592.78
260 Workers' Compensation				7,678.93
270 Group Insurance – Self-Insurance				241,053.41
Total Personnel Services – Employee Benefits				\$609,869.62
400 Purchased Property Services				
410 Cleaning Services				18,158.59
420 Utility Services				483,183.09
430 Repairs and Maintenance Services				94,338.82
Total Purchased Property Services				\$595,680.50
500 Other Purchased Services				
523 General Property and Liability Insurance				71,203.00
530 Communications				56,691.55
580 Travel				2,677.68
Total Other Purchased Services				\$130,572.23
600 Supplies				
610 General Supplies	98,609.34	124,494.30		223,103.64
Total Supplies	\$98,609.34	\$124,494.30		\$223,103.64
800 Other Objects				
810 Dues and Fees				288.49
Total Other Objects				\$288.49
Total 2620 Operation of Buildings Services	\$98,609.34	\$124,494.30		\$2,479,335.65

General Fund (10)

	<u>Elementary</u>	<u>Secondary</u>	<u>Federal</u>	<u>Total</u>
2630 Care and Upkeep of Grounds Services				
100 Personnel Services – Salaries				
100 Personnel Services – Salaries				46,341.76
Total Personnel Services – Salaries				\$46,341.76
200 Personnel Services – Employee Benefits				
210 Group Insurance – Contracted Provider				21.59
220 Social Security Contributions				3,495.43
230 PSERS Retirement Contributions				15,093.55
250 Unemployment Compensation				17.69
260 Workers' Compensation				386.91
270 Group Insurance – Self-Insurance				6,635.51
Total Personnel Services – Employee Benefits				\$25,650.68
400 Purchased Property Services				
430 Repairs and Maintenance Services				3,265.53
Total Purchased Property Services				\$3,265.53
600 Supplies				
610 General Supplies	5,247.55	9,285.00		14,532.55
Total Supplies	\$5,247.55	\$9,285.00		\$14,532.55
700 Property				
752 Capital Equipment – Original and Additional				338.03
Total Property				\$338.03
Total 2630 Care and Upkeep of Grounds Services	\$5,247.55	\$9,285.00		\$90,128.55

General Fund (10)

	<u>Elementary</u>	<u>Secondary</u>	<u>Federal</u>	<u>Total</u>
2650 Vehicle Operation and Maintenance Services (Other Than Student Transportation Vehicles)				
400 <u>Purchased Property Services</u>				
430 Repairs and Maintenance Services				10,502.36
Total Purchased Property Services				\$10,502.36
Total 2650 Vehicle Operation and Maintenance Services (Other Than Student Transportation Vehicles)				\$10,502.36

General Fund (10)

2660 Safety and Security Services

Elementary

Secondary

Federal

Total

300 Purchased Professional and Technical Services

350 Security / Safety Services

49,430.73

Total Purchased Professional and Technical Services

\$49,430.73

Total 2660 Safety and Security Services

\$49,430.73

General Fund (10)

	<u>Elementary</u>	<u>Secondary</u>	<u>Federal</u>	<u>Total</u>
2700 Student Transportation Services				
100 Personnel Services – Salaries				
100 Personnel Services – Salaries				941,444.31
Total Personnel Services – Salaries				\$941,444.31
200 Personnel Services – Employee Benefits				
210 Group Insurance – Contracted Provider				616.19
220 Social Security Contributions				71,859.65
230 PSERS Retirement Contributions				300,074.50
250 Unemployment Compensation				734.55
260 Workers' Compensation				7,989.33
270 Group Insurance – Self-Insurance				89,769.89
Total Personnel Services – Employee Benefits				\$471,044.11
300 Purchased Professional and Technical Services				
340 Technical Services				4,109.10
Total Purchased Professional and Technical Services				\$4,109.10
400 Purchased Property Services				
410 Cleaning Services				4,610.50
420 Utility Services				13,877.18
Total Purchased Property Services				\$18,487.68
500 Other Purchased Services				
516 Student Transportation Services From the IU				15,143.74
522 Automotive Liability Insurance				47,361.00
530 Communications				450.15
599 Other Miscellaneous Purchased Services				4,960.98
Total Other Purchased Services				\$67,915.87
600 Supplies				
610 General Supplies				76,178.16
620 Energy				169,700.30
Total Supplies				\$245,878.46
800 Other Objects				
810 Dues and Fees				296.23
Total Other Objects				\$296.23
Total 2700 Student Transportation Services				\$1,749,175.76

General Fund (10)

2720 Vehicle Operation Services

Elementary Secondary Federal Total

100 Personnel Services – Salaries

100 Personnel Services – Salaries 846,260.40

Total Personnel Services – Salaries \$846,260.40

200 Personnel Services – Employee Benefits

210 Group Insurance – Contracted Provider 554.82

220 Social Security Contributions 64,548.95

230 PSERS Retirement Contributions 268,741.84

250 Unemployment Compensation 671.00

260 Workers' Compensation 7,186.34

270 Group Insurance – Self-Insurance 83,552.13

Total Personnel Services – Employee Benefits \$425,255.08

300 Purchased Professional and Technical Services

340 Technical Services 3,466.41

Total Purchased Professional and Technical Services \$3,466.41

400 Purchased Property Services

410 Cleaning Services 4,284.07

420 Utility Services 13,877.18

Total Purchased Property Services \$18,161.25

500 Other Purchased Services

516 Student Transportation Services From the IU 15,143.74

522 Automotive Liability Insurance 40,256.85

530 Communications 440.25

599 Other Miscellaneous Purchased Services 4,216.87

Total Other Purchased Services \$60,057.71

600 Supplies

610 General Supplies 65,422.87

620 Energy 144,264.47

Total Supplies \$209,687.34

800 Other Objects

810 Dues and Fees 296.23

Total Other Objects \$296.23

Total 2720 Vehicle Operation Services \$1,563,184.42

General Fund (10)

	<u>Elementary</u>	<u>Secondary</u>	<u>Federal</u>	<u>Total</u>
2750 Nonpublic Transportation				
100 Personnel Services – Salaries				
100 Personnel Services – Salaries				95,183.91
Total Personnel Services – Salaries				\$95,183.91
200 Personnel Services – Employee Benefits				
210 Group Insurance – Contracted Provider				61.37
220 Social Security Contributions				7,310.70
230 PSERS Retirement Contributions				31,332.66
250 Unemployment Compensation				63.55
260 Workers' Compensation				802.99
270 Group Insurance – Self-Insurance				6,217.76
Total Personnel Services – Employee Benefits				\$45,789.03
300 Purchased Professional and Technical Services				
340 Technical Services				642.69
Total Purchased Professional and Technical Services				\$642.69
400 Purchased Property Services				
410 Cleaning Services				326.43
Total Purchased Property Services				\$326.43
500 Other Purchased Services				
522 Automotive Liability Insurance				7,104.15
530 Communications				9.90
599 Other Miscellaneous Purchased Services				744.11
Total Other Purchased Services				\$7,858.16
600 Supplies				
610 General Supplies				10,755.29
620 Energy				25,435.83
Total Supplies				\$36,191.12
Total 2750 Nonpublic Transportation				\$185,991.34

General Fund (10)

2800 Support Services – Central

Elementary

Secondary

Federal

Total

100 Personnel Services – Salaries

100 Personnel Services – Salaries

60,308.82

Total Personnel Services – Salaries

\$60,308.82

200 Personnel Services – Employee Benefits

210 Group Insurance – Contracted Provider

74.09

220 Social Security Contributions

4,473.32

230 PSERS Retirement Contributions

19,642.49

250 Unemployment Compensation

13.26

260 Workers' Compensation

503.57

270 Group Insurance – Self-Insurance

12,817.41

Total Personnel Services – Employee Benefits

\$37,524.14

500 Other Purchased Services

580 Travel

880.65

Total Other Purchased Services

\$880.65

Total 2800 Support Services – Central

\$98,713.61

LEA : 105253903 General McLane SD

Printed 10/31/2018 9:51:07 AM

General Fund (10)

	<u>Elementary</u>	<u>Secondary</u>	<u>Federal</u>	<u>Total</u>
2810 Planning, Research, Development and Evaluation Services				
500 <u>Other Purchased Services</u>				
580 Travel				880.65
Total Other Purchased Services				\$880.65
Total 2810 Planning, Research, Development and Evaluation Services				\$880.65

LEA : 105253903 General McLane SD

Printed 10/31/2018 9:51:07 AM

General Fund (10)

2820 Information Services

Elementary

Secondary

Federal

Total

100 Personnel Services – Salaries

100 Personnel Services – Salaries

60,308.82

Total Personnel Services – Salaries

\$60,308.82

200 Personnel Services – Employee Benefits

210 Group Insurance – Contracted Provider

74.09

220 Social Security Contributions

4,473.32

230 PSERS Retirement Contributions

19,642.49

250 Unemployment Compensation

13.26

260 Workers' Compensation

503.57

270 Group Insurance – Self-Insurance

12,817.41

Total Personnel Services – Employee Benefits

\$37,524.14

Total 2820 Information Services

\$97,832.96

LEA : 105253903 General McLane SD

Printed 10/31/2018 9:51:07 AM

General Fund (10)

2821 Supervision of Information Services

Elementary

Secondary

Federal

Total

100 Personnel Services – Salaries

100 Personnel Services – Salaries

60,308.82

Total Personnel Services – Salaries

\$60,308.82

200 Personnel Services – Employee Benefits

210 Group Insurance – Contracted Provider

74.09

220 Social Security Contributions

4,473.32

230 PSERS Retirement Contributions

19,642.49

250 Unemployment Compensation

13.26

260 Workers' Compensation

503.57

270 Group Insurance – Self-Insurance

12,817.41

Total Personnel Services – Employee Benefits

\$37,524.14

Total 2821 Supervision of Information Services

\$97,832.96

General Fund (10)

2900 Other Support Services

Elementary

Secondary

Federal

Total

500 Other Purchased Services

595 IU Payments By Withholding

52,230.65

Total Other Purchased Services

\$52,230.65

Total 2900 Other Support Services

\$52,230.65

General Fund (10)

2910 Support Services Not Listed Elsewhere In the 2000 Series

Elementary

Secondary

Federal

Total

500 Other Purchased Services

595 IU Payments By Withholding

52,230.65

Total Other Purchased Services

\$52,230.65

Total 2910 Support Services Not Listed Elsewhere In the 2000 Series

\$52,230.65

General Fund (10)

3000 Operation of Non-Instructional Services	<u>Total</u>
100 Personnel Services – Salaries	
100 Personnel Services – Salaries	488,051.30
Total Personnel Services – Salaries	\$488,051.30
200 Personnel Services – Employee Benefits	
210 Group Insurance – Contracted Provider	102.61
220 Social Security Contributions	39,576.25
230 PSERS Retirement Contributions	166,247.94
250 Unemployment Compensation	415.29
260 Workers’ Compensation	4,338.92
270 Group Insurance – Self-Insurance	17,090.09
Total Personnel Services – Employee Benefits	\$227,771.10
300 Purchased Professional and Technical Services	
330 Other Professional Services	8,279.25
350 Security / Safety Services	5,360.25
390 Other Purchased Professional and Technical Services	25,995.50
Total Purchased Professional and Technical Services	\$39,635.00
400 Purchased Property Services	
430 Repairs and Maintenance Services	8,079.66
440 Rentals	3,113.00
Total Purchased Property Services	\$11,192.66
500 Other Purchased Services	
580 Travel	59,175.97
591 Services Purchased Locally	26,614.70
Total Other Purchased Services	\$85,790.67
600 Supplies	
610 General Supplies	12,007.12
Total Supplies	\$12,007.12
800 Other Objects	
810 Dues and Fees	800.00
890 Miscellaneous Expenditures	3,546.00
Total Other Objects	\$4,346.00
Total 3000 Operation of Non-Instructional Services	\$868,793.85

General Fund (10)

3200 Student Activities

	<u>Elementary</u>	<u>Secondary</u>	<u>Federal</u>	<u>Total</u>
100 Personnel Services – Salaries				
100 Personnel Services – Salaries				488,051.30
Total Personnel Services – Salaries				\$488,051.30
200 Personnel Services – Employee Benefits				
210 Group Insurance – Contracted Provider				102.61
220 Social Security Contributions				39,576.25
230 PSERS Retirement Contributions				166,247.94
250 Unemployment Compensation				415.29
260 Workers' Compensation				4,338.92
270 Group Insurance – Self-Insurance				17,090.09
Total Personnel Services – Employee Benefits				\$227,771.10
300 Purchased Professional and Technical Services				
330 Other Professional Services				8,279.25
350 Security / Safety Services				5,360.25
390 Other Purchased Professional and Technical Services				25,995.50
Total Purchased Professional and Technical Services				\$39,635.00
400 Purchased Property Services				
430 Repairs and Maintenance Services				8,079.66
440 Rentals				3,113.00
Total Purchased Property Services				\$11,192.66
500 Other Purchased Services				
580 Travel				59,175.97
591 Services Purchased Locally				26,614.70
Total Other Purchased Services				\$85,790.67
600 Supplies				
610 General Supplies				12,007.12
Total Supplies				\$12,007.12
800 Other Objects				
810 Dues and Fees				800.00
Total Other Objects				\$800.00
Total 3200 Student Activities				\$865,247.85

LEA : 105253903 General McLane SD

Printed 10/31/2018 9:51:11 AM

General Fund (10)

3400 Scholarships and Awards

Elementary

Secondary

Federal

Total

800 Other Objects

890 Miscellaneous Expenditures

3,546.00

Total Other Objects

\$3,546.00

Total 3400 Scholarships and Awards

\$3,546.00

General Fund (10)

4000 Facilities Acquisition, Construction and Improvement Services

Total

700 Property

762 Capitalized Equipment - Replacement

486,468.00

Total Property

\$486,468.00

Total 4000 Facilities Acquisition, Construction and Improvement Services

\$486,468.00

LEA : 105253903 General McLane SD

Printed 10/31/2018 9:51:13 AM

General Fund (10)

	<u>Elementary</u>	<u>Secondary</u>	<u>Federal</u>	<u>Total</u>
4600 Existing Building Improvement Services				
700 <u>Property</u>				
762 Capitalized Equipment - Replacement				486,468.00
Total Property				\$486,468.00
Total 4600 Existing Building Improvement Services				\$486,468.00

General Fund (10)

5000 Other Expenditures and Financing Uses

Total

800 Other Objects

880 Refunds of Prior Years' Receipts

2,929.00

Total Other Objects

\$2,929.00

900 Other Uses of Funds

930 Fund Transfers

72,351.00

939 Other Fund Transfers

2,005,000.00

Total Other Uses of Funds

\$2,077,351.00

Total 5000 Other Expenditures and Financing Uses

\$2,080,280.00

LEA : 105253903 General McLane SD

Printed 10/31/2018 9:51:16 AM

General Fund (10)

5100 Debt Service / Other Expenditures and Financing Uses	<u>Elementary</u>	<u>Secondary</u>	<u>Federal</u>	<u>Total</u>
800 <u>Other Objects</u>				
880 Refunds of Prior Years' Receipts				2,929.00
Total Other Objects				\$2,929.00
Total 5100 Debt Service / Other Expenditures and Financing Uses				\$2,929.00

LEA : 105253903 General McLane SD

Printed 10/31/2018 9:51:16 AM

General Fund (10)

5130 Refund of Prior Year Revenues / Receipts

Elementary

Secondary

Federal

Total

800 Other Objects

880 Refunds of Prior Years' Receipts

2,929.00

Total Other Objects

\$2,929.00

Total 5130 Refund of Prior Year Revenues / Receipts

\$2,929.00

LEA : 105253903 General McLane SD

Printed 10/31/2018 9:51:16 AM

General Fund (10)

	<u>Elementary</u>	<u>Secondary</u>	<u>Federal</u>	<u>Total</u>
5200 Interfund Transfers – Out				
900 Other Uses of Funds				
930 Fund Transfers				72,351.00
939 Other Fund Transfers				2,005,000.00
Total Other Uses of Funds				\$2,077,351.00
Total 5200 Interfund Transfers – Out				\$2,077,351.00

LEA : 105253903 General McLane SD

Printed 10/31/2018 9:51:16 AM

General Fund (10)

	<u>Elementary</u>	<u>Secondary</u>	<u>Federal</u>	<u>Total</u>
5230 Capital Projects Fund Transfers				
900 Other Uses of Funds				
939 Other Fund Transfers				2,005,000.00
Total Other Uses of Funds				\$2,005,000.00
Total 5230 Capital Projects Fund Transfers				\$2,005,000.00

LEA : 105253903 General McLane SD

Printed 10/31/2018 9:51:16 AM

General Fund (10)

	<u>Elementary</u>	<u>Secondary</u>	<u>Federal</u>	<u>Total</u>
5250 Enterprise Fund Transfers				
900 Other Uses of Funds				
930 Fund Transfers				72,351.00
Total Other Uses of Funds				\$72,351.00
Total 5250 Enterprise Fund Transfers				\$72,351.00

Other Capital Projects Fund (39)

2000 Support Services

700 Property

766 Capitalized Technology Hardware and Equipment – Replacement

250,674.00

Total Property

\$250,674.00

Total 2000 Support Services

\$250,674.00

LEA : 105253903 General McLane SD

Printed 10/31/2018 9:51:10 AM

Other Capital Projects Fund (39)

2200 Support Services – Instructional Staff

700 Property

766 Capitalized Technology Hardware and Equipment– Replacement

Total Property

Total 2200 Support Services – Instructional Staff

	<u>Elementary</u>	<u>Secondary</u>	<u>Federal</u>	<u>Total</u>
766 Capitalized Technology Hardware and Equipment– Replacement	250,674.00			250,674.00
Total Property	\$250,674.00			\$250,674.00
Total 2200 Support Services – Instructional Staff	\$250,674.00			\$250,674.00

LEA : 105253903 General McLane SD

Printed 10/31/2018 9:51:10 AM

Other Capital Projects Fund (39)

2220 Technology Support Services

700 Property

766 Capitalized Technology Hardware and Equipment– Replacement

	<u>Elementary</u>	<u>Secondary</u>	<u>Federal</u>	<u>Total</u>
766 Capitalized Technology Hardware and Equipment– Replacement	250,674.00			250,674.00
Total Property	\$250,674.00			\$250,674.00
Total 2220 Technology Support Services	\$250,674.00			\$250,674.00

LEA : 105253903 General McLane SD

Printed 10/31/2018 9:51:14 AM

Other Capital Projects Fund (39)

4000 Facilities Acquisition, Construction and Improvement Services

Total

700 Property

762 Capitalized Equipment - Replacement

3,709,724.00

Total Property

\$3,709,724.00

Total 4000 Facilities Acquisition, Construction and Improvement Services

\$3,709,724.00

LEA : 105253903 General McLane SD

Printed 10/31/2018 9:51:14 AM

Other Capital Projects Fund (39)

4600 Existing Building Improvement Services

Elementary

Secondary

Federal

Total

700 Property

762 Capitalized Equipment - Replacement

3,709,724.00

Total Property

\$3,709,724.00

Total 4600 Existing Building Improvement Services

\$3,709,724.00

	<u>General Fund(10)</u>	<u>Public Purpose Trust(27)</u>	<u>Other Compt Approved (28)</u>	<u>Athletic / Activity(29)</u>	<u>Capital Reserve (690, 1850)(31)</u>
1000 Instruction					
1100 Regular Programs - Elementary / Secondary	13,679,755.72				
1200 Special Programs - Elementary / Secondary	4,000,183.05				
1300 Vocational Education	1,316,455.66				
1400 Other Instructional Programs - Elementary / Secondary	346,039.34				
Total Instruction	\$19,342,433.77				
2000 Support Services					
2100 Support Services - Students	1,036,394.81				
2200 Support Services - Instructional Staff	1,361,820.37				
2300 Support Services - Administration	2,014,852.11				
2400 Support Services - Pupil Health	449,223.38				
2500 Support Services - Business	395,700.72				
2600 Operation and Maintenance of Plant Services	2,754,808.74				
2700 Student Transportation Services	1,749,175.76				
2800 Support Services - Central	98,713.61				
2900 Other Support Services	52,230.65				
Total Support Services	\$9,912,920.15				
3000 Operation of Non-Instructional Services					
3200 Student Activities	865,247.85				
3400 Scholarships and Awards	3,546.00				
Total Operation of Non-Instructional Services	\$868,793.85				
4000 Facilities Acquisition, Construction and Improvement Services					
4600 Existing Building Improvement Services	486,468.00				
Total Facilities Acquisition, Construction and Improvement Services	\$486,468.00				
5000 Other Expenditures and Financing Uses					
5100 Debt Service / Other Expenditures and Financing Uses	2,929.00				
5200 Interfund Transfers - Out	2,077,351.00				
Total Other Expenditures and Financing Uses	\$2,080,280.00				
TOTAL ACTUAL EXPENDITURES & OTHER FINANCING USES	\$32,690,895.77				

	<u>Capital Reserve (1431)(32)</u>	<u>Other Capital Projects Fund(39)</u>	<u>Debt Service(40)</u>	<u>Permanent(90)</u>	<u>Total</u>
1000 Instruction					
1100 Regular Programs - Elementary / Secondary					13,679,755.72
1200 Special Programs - Elementary / Secondary					4,000,183.05
1300 Vocational Education					1,316,455.66
1400 Other Instructional Programs - Elementary / Secondary					346,039.34
Total Instruction					\$19,342,433.77
2000 Support Services					
2100 Support Services - Students					1,036,394.81
2200 Support Services - Instructional Staff		250,674.00			1,612,494.37
2300 Support Services - Administration					2,014,852.11
2400 Support Services - Pupil Health					449,223.38
2500 Support Services - Business					395,700.72
2600 Operation and Maintenance of Plant Services					2,754,808.74
2700 Student Transportation Services					1,749,175.76
2800 Support Services - Central					98,713.61
2900 Other Support Services					52,230.65
Total Support Services		\$250,674.00			\$10,163,594.15
3000 Operation of Non-Instructional Services					
3200 Student Activities					865,247.85
3400 Scholarships and Awards					3,546.00
Total Operation of Non-Instructional Services					\$868,793.85
4000 Facilities Acquisition, Construction and Improvement Services					
4600 Existing Building Improvement Services		3,709,724.00			4,196,192.00
Total Facilities Acquisition, Construction and Improvement Services		\$3,709,724.00			\$4,196,192.00
5000 Other Expenditures and Financing Uses					
5100 Debt Service / Other Expenditures and Financing Uses					2,929.00
5200 Interfund Transfers - Out					2,077,351.00
Total Other Expenditures and Financing Uses					\$2,080,280.00
TOTAL ACTUAL EXPENDITURES & OTHER FINANCING USES		\$3,960,398.00			\$36,651,293.77

PSERS Salary Data (Salary Data should relate to the General Fund only)

Amount Description	Amount
Total Salary Base for salaries subject to PSERS withholding	15,601,998.00
Total Federally Funded salaries subject to PSERS withholding	234,765.00
	<hr/>

Title I Expenditure Data

Amount Description	Amount
Expenditures Funded with Current Title I Funds	316,195.00
Expenditures Funded with Carry over Title I Funds	
Total Title I Expenditure Data	<hr/> \$316,195.00 <hr/>

LEA : 105253903 General McLane SD

Printed 10/31/2018 9:51:28 AM

Function	Object	Amount
1100	300	4,430.00
1100	610	238,620.00
1100	760	8,135.00
2200	580	5,995.00
2200	640	20.00
2200	760	234.00
2600	610	21,239.00
2600	400	39,652.00
2900	610	141.00

Note: Only reimbursable encumbrances will be included in your Actual Instructional Expense calculation

TOTAL ENCUMBRANCES:	\$318,466.00
----------------------------	---------------------

Benefits for Staff Relative to Collective Bargaining Agreements

	OBJECT	COVERED	NOT COVERED	TOTAL
10 General Fund				
	211 Medical Insurance			
	212 Dental Insurance			
	215 Eye Care Insurance			
	216 Prescription Insurance			
	271 Self-Insurance Medical Benefits	2,070,382.00	651,843.00	2,722,225.00
	272 Self-Insurance Dental Benefits	87,293.00	26,078.00	113,371.00
	275 Self-Insurance Eye Care Benefits	16,195.00	4,762.00	20,957.00
	276 Self-Insurance Prescription Benefits			
	FUND TOTAL	\$2,173,870.00	\$682,683.00	\$2,856,553.00
50 Enterprise Fund				
	211 Medical Insurance			
	212 Dental Insurance			
	215 Eye Care Insurance			
	216 Prescription Insurance			
	271 Self-Insurance Medical Benefits		10,099.00	10,099.00
	272 Self-Insurance Dental Benefits			
	275 Self-Insurance Eye Care Benefits			
	276 Self-Insurance Prescription Benefits			
	FUND TOTAL		\$10,099.00	\$10,099.00
60 Internal Service Fund	No Self Insurance data to report			
	211 Medical Insurance			
	212 Dental Insurance			
	215 Eye Care Insurance			
	216 Prescription Insurance			
	271 Self-Insurance Medical Benefits			
	272 Self-Insurance Dental Benefits			
	275 Self-Insurance Eye Care Benefits			
	276 Self-Insurance Prescription Benefits			
	FUND TOTAL			
Total of All Funds		\$2,173,870.00	\$692,782.00	\$2,866,652.00

LEA : 105253903 General McLane SD

Printed 10/31/2018 9:51:30 AM

Function	Special Education (Prior Year)	Nonspecial Education (Prior Year)	Total (Prior Year)	Special Education (Current Year)	Nonspecial Education (Current Year)	Total (Current Year)
2120 Guidance Services	95,678.50	493,974.43	589,652.93	104,744.44	520,763.31	625,507.75
2140 Psychological Services	210,171.49		210,171.49	110,073.28		110,073.28
2150 Speech Pathology and Audiology Services						
2160 Social Work Services	165,561.93		165,561.93	171,909.18		171,909.18
2260 Instruction and Curriculum Development Services	35,282.37		35,282.37	171,238.13		171,238.13
2350 Legal and Accounting Services	39,360.59	32,204.12	71,564.71	56,988.90	46,627.28	103,616.18
2420 Medical Services	76.35	394.19	470.54			
2440 Nursing Services	132,311.18	308,726.10	441,037.28	134,767.01	314,456.37	449,223.38
2700 Student Transportation Services	263,212.24	1,358,927.21	1,622,139.45	283,334.03	1,408,666.34	1,692,000.37
Total	\$941,654.65	\$2,194,226.05	\$3,135,880.70	\$1,033,054.97	\$2,290,513.30	\$3,323,568.27

LEA : 105253903 General McLane SD

Printed 10/31/2018 9:51:31 AM

(PRINCIPAL AMOUNTS ONLY)

GOVERNMENTAL FUNDS/ ACTIVITIES

	Short-Term Borrowing	General Obligation Bonds/Notes	Authority Building Obligations	Other Long-Term Debt	Other Post-Employment Benefits (OPEB)	Compensated Absences	Net Pension Liability	Total
1. Debt at Beginning of Fiscal Year					1,158,861.00	1,607,623.00	54,976,040.00	57,742,524.00
2. Additional Debt Incurred During Year					128,645.00	74,096.00	297,920.00	500,661.00
3. Retirements and Repayments						78,458.00		78,458.00
4. Debt at End of Fiscal Year					1,287,506.00	1,603,261.00	55,273,960.00	58,164,727.00
5. Accreted Interest at End Of Fiscal Year								
6. Total Debt and Accreted Interest					1,287,506.00	1,603,261.00	55,273,960.00	58,164,727.00
7. Current Portion P&I - Due within 1 year					360,625.00	164,419.00	5,609,000.00	6,134,044.00
8. Interest Paid during current fiscal year					49,441.00			49,441.00

(PRINCIPAL AMOUNTS ONLY)

PROPRIETARY FUNDS

	Short-Term Borrowing	General Obligation Bonds/Notes	Authority Building Obligations	Other Long-Term Debt	Other Post-Employment Benefits (OPEB)	Compensated Absences	Net Pension Liability	Total
1. Debt at Beginning of Fiscal Year							1,121,960.00	1,121,960.00
2. Additional Debt Incurred During Year							6,080.00	6,080.00
3. Retirements and Repayments								
4. Debt at End of Fiscal Year							1,128,040.00	1,128,040.00
5. Accreted Interest at End Of Fiscal Year								
6. Total Debt and Accreted Interest							1,128,040.00	1,128,040.00
7. Current Portion P&I - Due within 1 year								
8. Interest Paid during current fiscal year								

Total Principal and Interest Payments Made by Your School - All Funds

Function	Fund		Principal (910)	Principal (920)	Interest (830)	Total (Principal +Interest)	Misc Other Uses (990)
5110	10	General Fund					
5110	20	Special Revenue Funds					
5110	30	Capital Projects Funds					
5110	40	Debt Service Fund					
5110	90	Permanent Fund					
5120	10	General Fund					
5120	20	Special Revenue Funds					
5120	30	Capital Projects Funds					
5120	40	Debt Service Fund					

Total Debt Payments - Governmental Funds

Function	Fund		Principal (910)	Principal (920)	Interest (830)	Total (Principal +Interest)
5110	50	Enterprise Fund				
5110	60	Internal Service Fund				
5120	50	Enterprise Fund				
5120	60	Internal Service Fund				

Total Debt Payments - Proprietary Funds

Debt Details
Governmental Funds/ Activities

Debt Category	Debt Issue Date (MM/YYYY)	Principal Amounts Only				Current Portion Due Within One Year (Principal and Interest)	Interest Paid During Fiscal Year
		Debt at Beginning of Fiscal Year	Additions	Reductions / Repayments	Debt at End of Fiscal Year		
Compensated Absences		1,607,623.00	74,096.00	78,458.00	1,603,261.00	164,419.00	
Other Post-Employment Benefits (OPEB)		1,158,861.00	128,645.00		1,287,506.00	360,625.00	49,441.00
Net Pension Liability		54,976,040.00	297,920.00		55,273,960.00	5,609,000.00	
Totals for Debt Entered:		\$57,742,524.00	\$500,661.00	\$78,458.00	\$58,164,727.00	\$6,134,044.00	\$49,441.00

Bond Details
Proprietary Funds

Debt Category	Debt Issue Date (MM/YYYY)	Principal Amounts Only				Current Portion Due Within One Year (Principal and Interest)	Interest Paid During Fiscal Year
		Debt at Beginning of Fiscal Year	Additions	Reductions / Repayments	Debt at End of Fiscal Year		
Net Pension Liability		1,121,960.00	6,080.00		1,128,040.00		
Totals for Debt Entered:		\$1,121,960.00	\$6,080.00		\$1,128,040.00		

General Fund (10)

Section 1: Tuition/Purchased Services as Reported within Expenditure Detail

	Amount
Tuition Reported in General Fund Expenditures 1000-560	1,130,041.66
Purchased Services in General Fund Expenditures 1000-594 and 1000-597	

Section 1 Total	\$1,130,041.66
------------------------	-----------------------

Section 2: Tuition Paid to Institution Types During Fiscal Year

	Tuition Paid For Nonspecial Education	Tuition Paid For Special Education	Total
1 1306 Institutions			
2 Institutionalized Children's Programs		44,081.00	44,081.00
3 Juveniles Incarcerated in Adult Facilities			
4 Residential Treatment Facilities		7,320.32	7,320.32
5 Other Local Education Agencies		84,547.20	84,547.20
6 Brick and Mortar Charter Schools	80,876.64		80,876.64
7 Cyber Charter Schools	287,187.16	92,806.67	379,993.83
8 Career and Technology Centers	392,787.96	70,690.95	463,478.91
9 Approved Private Schools		63,597.86	63,597.86
10 PA Chartered Schools for the Deaf and Blind			
11 Private Residential Rehabilitative Institutions		6,145.90	6,145.90
12 Juvenile Detention Centers			
13 Special Program Jointures			
14 Other Tuition Not Included Elsewhere In This Section			
Section 2 Total	\$760,851.76	\$369,189.90	\$1,130,041.66

1 .	<u>Student Transportation Services for Educational Field Trips</u>	27,406.42
2 .	<u>Student Transportation Services for Student Activities</u>	59,175.97
3 .	<u>Rental of Vehicles for Student Transportation Services</u>	
4 .	<u>Capital Reserve Funds</u>	

Include only district-owned transportation expenditures paid from State or local money.
 DO NOT include federal expenditures or payments to contract service providers.
 Contracted transportation services should not be recorded on this schedule.

LEA : 105253903 General McLane SD

Printed 10/31/2018 9:51:34 AM

Food Service / Cafeteria Operations Fund (51)

3000 Operation of Non-Instructional Services

Total

100 Personnel Services – Salaries

100 Personnel Services – Salaries 350,073.00

Total Personnel Services – Salaries \$350,073.00

200 Personnel Services – Employee Benefits

220 Social Security Contributions 26,217.00

230 PSERS Retirement Contributions 55,852.00

250 Unemployment Compensation 2,341.00

260 Workers' Compensation 3,851.00

270 Group Insurance – Self-Insurance 10,079.00

299 All Other Employee Benefits 532.00

Total Personnel Services – Employee Benefits \$98,872.00

300 Purchased Professional and Technical Services

390 Other Purchased Professional and Technical Services 500.00

Total Purchased Professional and Technical Services \$500.00

400 Purchased Property Services

430 Repairs and Maintenance Services 1,466.00

Total Purchased Property Services \$1,466.00

500 Other Purchased Services

550 Printing and Binding 789.00

580 Travel 456.00

Total Other Purchased Services \$1,245.00

600 Supplies

610 General Supplies 43,600.00

630 Food 351,671.00

Total Supplies \$395,271.00

700 Property

740 Depreciation 7,644.00

Total Property \$7,644.00

Total 3000 Operation of Non-Instructional Services \$855,071.00

Food Service / Cafeteria Operations Fund (51)

	<u>Elementary</u>	<u>Secondary</u>	<u>Federal</u>	<u>Total</u>
3100 Food Services				
100 Personnel Services – Salaries				
100 Personnel Services – Salaries				350,073.00
Total Personnel Services – Salaries				\$350,073.00
200 Personnel Services – Employee Benefits				
220 Social Security Contributions				26,217.00
230 PSERS Retirement Contributions				55,852.00
250 Unemployment Compensation				2,341.00
260 Workers' Compensation				3,851.00
270 Group Insurance – Self-Insurance				10,079.00
299 All Other Employee Benefits				532.00
Total Personnel Services – Employee Benefits				\$98,872.00
300 Purchased Professional and Technical Services				
390 Other Purchased Professional and Technical Services				500.00
Total Purchased Professional and Technical Services				\$500.00
400 Purchased Property Services				
430 Repairs and Maintenance Services				1,466.00
Total Purchased Property Services				\$1,466.00
500 Other Purchased Services				
550 Printing and Binding				789.00
580 Travel				456.00
Total Other Purchased Services				\$1,245.00
600 Supplies				
610 General Supplies				43,600.00
630 Food				351,671.00
Total Supplies				\$395,271.00
700 Property				
740 Depreciation				7,644.00
Total Property				\$7,644.00
Total 3100 Food Services				\$855,071.00

	<u>Food Service(51)</u>	<u>Child Care Operations(52)</u>	<u>Other Enterprise(58)</u>	<u>Internal Service(60)</u>	<u>Total</u>
3000 <u>Operation of Non-Instructional Services</u>					
3100 Food Services	855,071.00				855,071.00
Total Operation of Non-Instructional Services	\$855,071.00				\$855,071.00
TOTAL ACTUAL EXPENDITURES & OTHER FINANCING USES	\$855,071.00				\$855,071.00